



Department of
**Transportation &
Environmental Services**

South Patrick Street Median / Pedestrian Improvement Project

Pre-Construction Community Meeting

Nannie J Lee Recreation Center, 1108 Jefferson Street
And Zoom Webinar

Monday, May 11, 2026

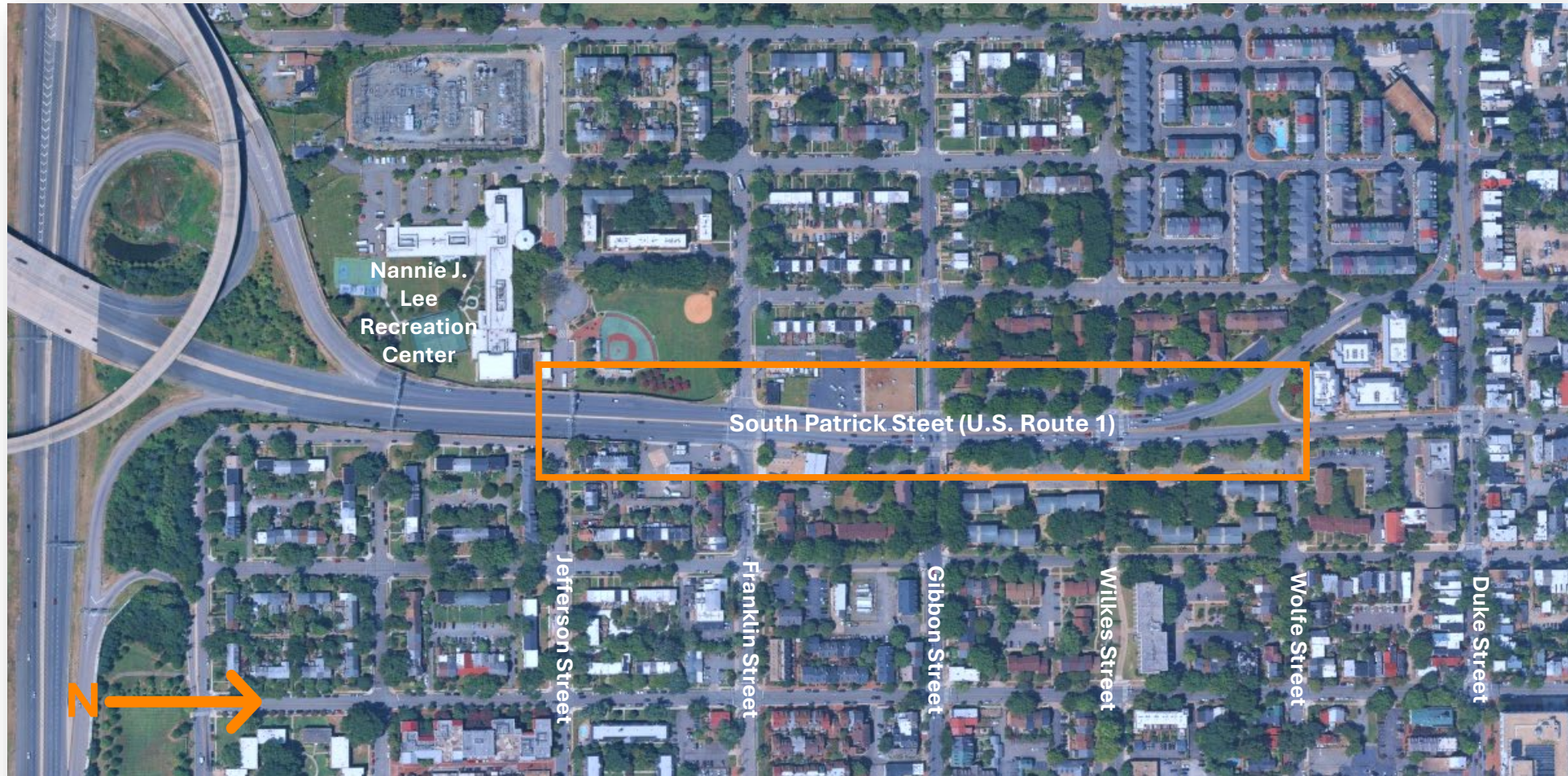


Agenda

- ▶ Project Location
- ▶ Project Overview
- ▶ Key Improvements
- ▶ Construction Impacts
- ▶ Project Schedule
- ▶ Closing Summary
- ▶ Questions



Project Location



► South Patrick Street (US-1) between Jefferson Street and Wolfe Street



Project Overview



Purpose: Connect neighborhoods, create a more aesthetically pleasing gateway, and calm traffic patterns to improve safety for all road and sidewalk users



Scope of Work: Widen the median, and install curb extensions, Americans with Disabilities Act (ADA) compliant ramps, pedestrian signals, and crosswalks



Funding Source: SmartScale funding administered by Virginia Department of Transportation

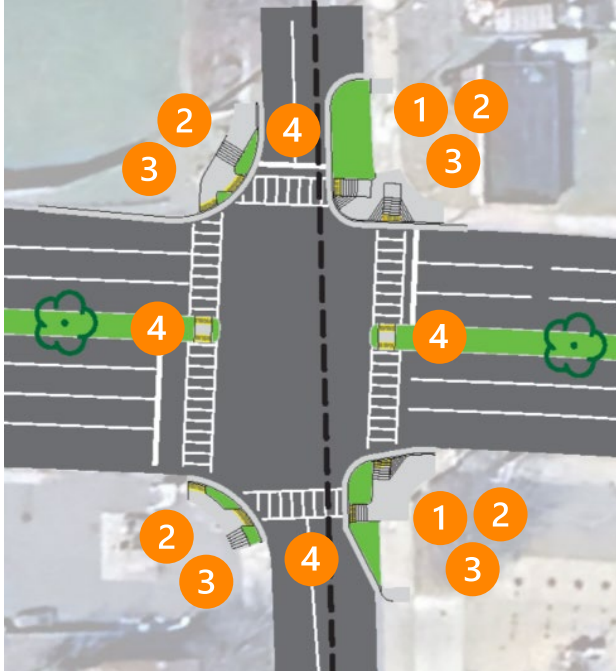


Construction Contractor: Ardent Construction LLC

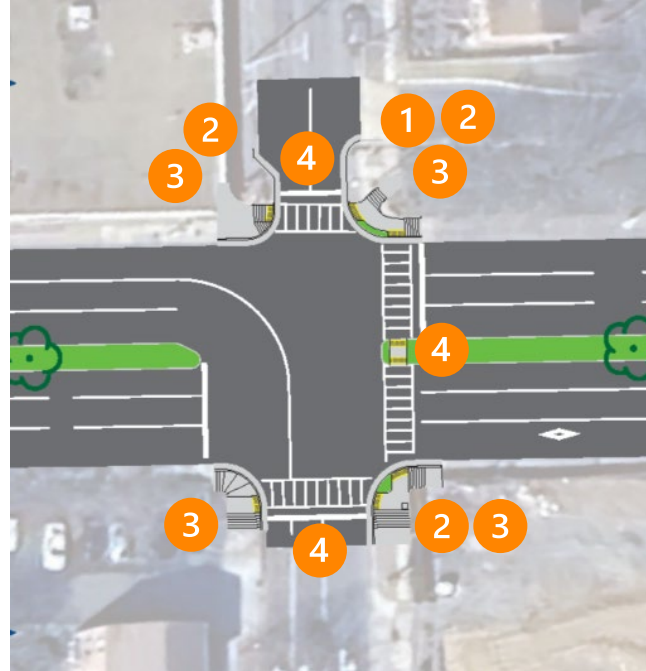


Key Improvements: By Intersection

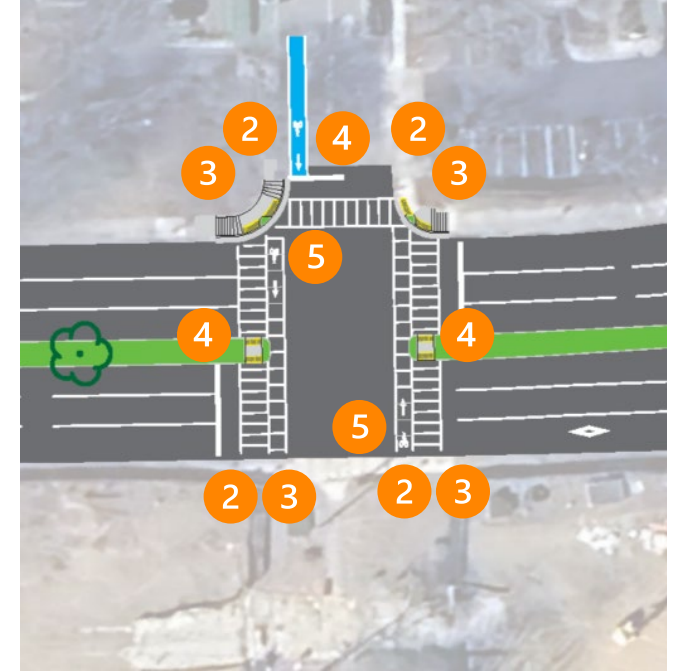
Franklin Street Intersection



Gibbon Street Intersection



Wilkes Street Intersection



LEGEND

- 1 Curb extensions
- 2 Pedestrian signals

- 3 Curb ramps
- 4 Crosswalks

- 5 Dedicated bike crossings



Key Improvements: Median and Lanes



LEGEND

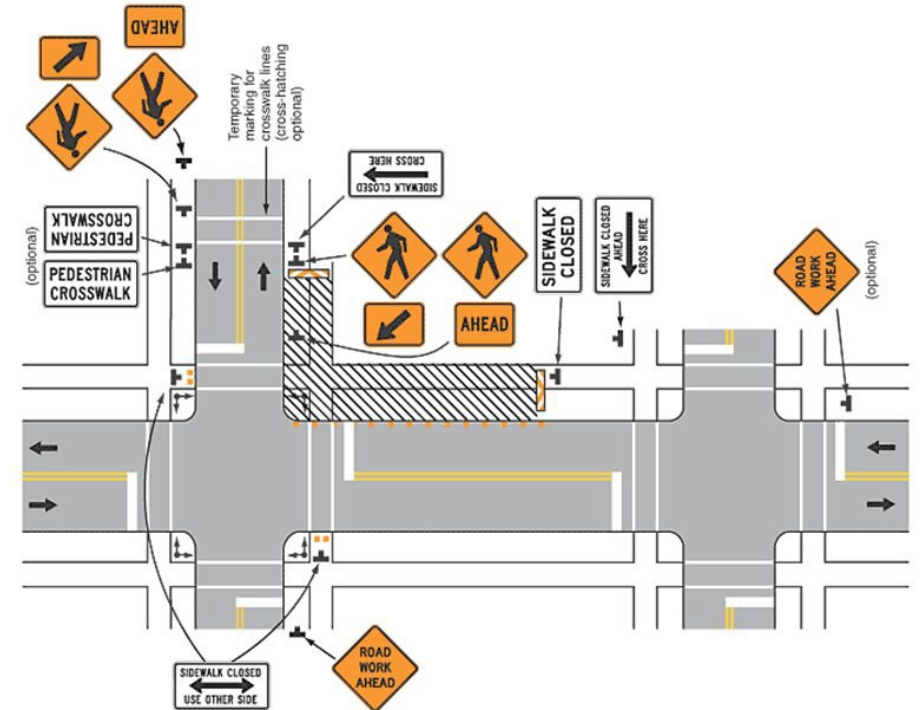
- 6 Wider medians
- 7 Street trees

- 8 Narrow travel lanes



Construction Impacts

- ▶ Phased closures
 - ▶ Single or double lane closures (construction hours only)
 - ▶ Sidewalk closures (24 hours)
 - ▶ Pedestrian crossing closures (24 hours)
- ▶ Limited parking impacts
 - ▶ Parking restrictions along Wilkes Street, Gibbons Street, and Franklin Street
 - ▶ No Parking signs will be installed 72 hours ahead of construction
- ▶ No impact to DASH service
- ▶ Coordination with adjacent construction underway





Project Schedule

Construction Duration:

- ▶ June 1 – Late January 2027

Work Hours:

- ▶ Monday – Friday: 9 a.m. – 3 p.m.
- ▶ Saturday: 9 a.m. – 6 p.m.





Closing Summary

Purpose: Improve safety along the corridor for all roadway users.

Scope of Work: Widen the median from 4 feet to 9 feet and install trees, curb ramps, pedestrian signals, and crosswalks.

Duration: June 1 – late January 2027

Location: South Patrick Street (U.S. Route 1) between Jefferson Street and Wolfe Street.

Maintenance of Traffic: Single and double lane, sidewalk, and crossing closures. Impacts will be phased.



Additional Information

City Project Manager

Reginald M. Arno

Transportation & Environmental
Services – Project Implementation

703.746.4631

Reginald.Arno@AlexandriaVA.gov

Contractor Emergency Contact

Luis Perez, Superintendent

Ardent Construction

703.398.9489

Luis@ArdentCompany.com

Project Webpage



alexandriava.gov/go/5341