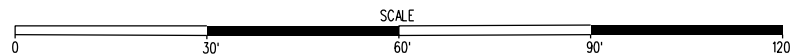


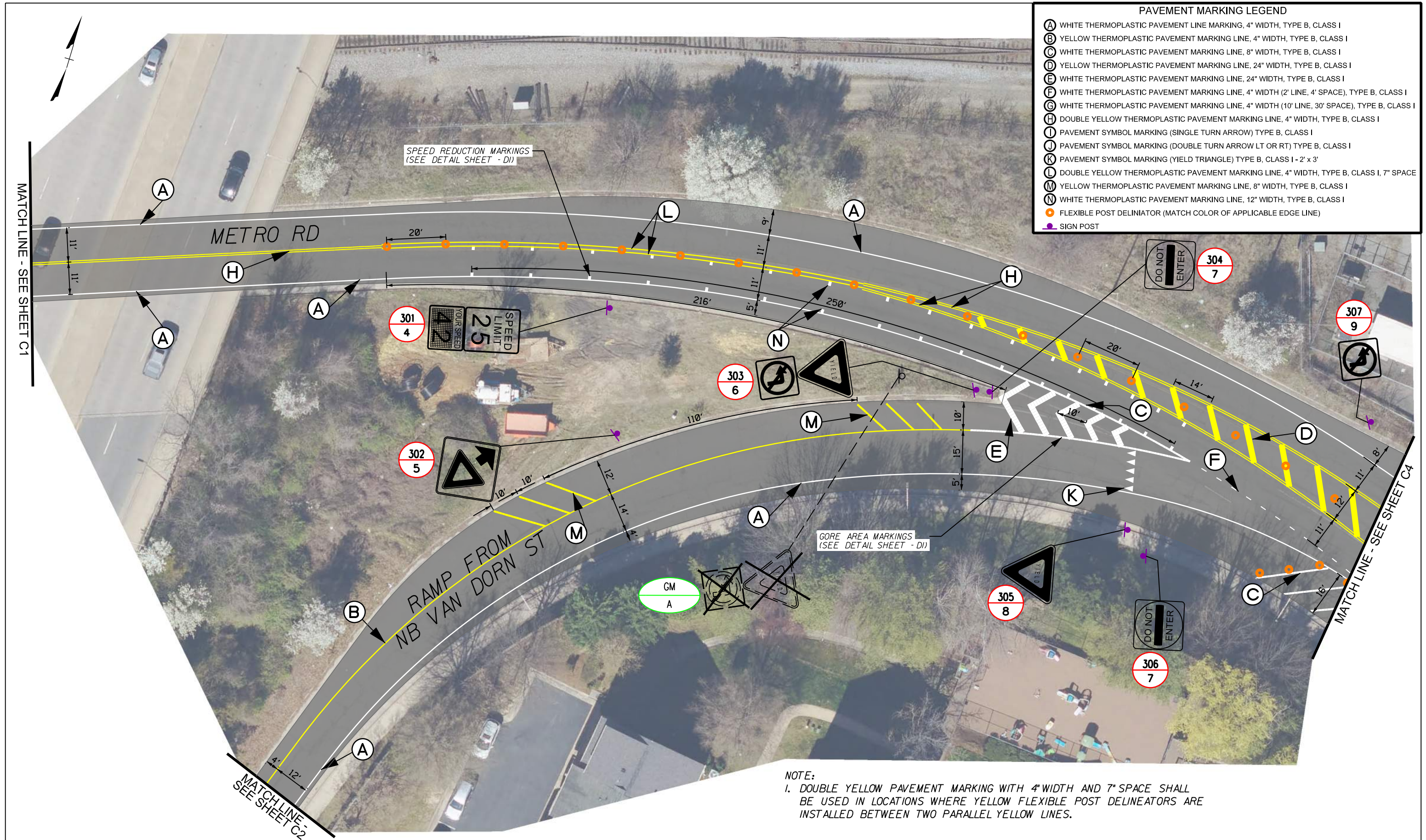
PAVEMENT MARKING LEGEND

- (A) WHITE THERMOPLASTIC PAVEMENT LINE MARKING, 4" WIDTH, TYPE B, CLASS I
- (B) YELLOW THERMOPLASTIC PAVEMENT MARKING LINE, 4" WIDTH, TYPE B, CLASS I
- (C) WHITE THERMOPLASTIC PAVEMENT MARKING LINE, 8" WIDTH, TYPE B, CLASS I
- (D) YELLOW THERMOPLASTIC PAVEMENT MARKING LINE, 24" WIDTH, TYPE B, CLASS I
- (E) WHITE THERMOPLASTIC PAVEMENT MARKING LINE, 24" WIDTH, TYPE B, CLASS I
- (F) WHITE THERMOPLASTIC PAVEMENT MARKING LINE, 4" WIDTH (2' LINE, 4' SPACE), TYPE B, CLASS I
- (G) WHITE THERMOPLASTIC PAVEMENT MARKING LINE, 4" WIDTH (10' LINE, 30' SPACE), TYPE B, CLASS I
- (H) DOUBLE YELLOW THERMOPLASTIC PAVEMENT MARKING LINE, 4" WIDTH, TYPE B, CLASS I
- (I) PAVEMENT SYMBOL MARKING (SINGLE TURN ARROW) TYPE B, CLASS I
- (J) PAVEMENT SYMBOL MARKING (DOUBLE TURN ARROW LT OR RT) TYPE B, CLASS I
- (K) PAVEMENT SYMBOL MARKING (YIELD TRIANGLE) TYPE B, CLASS I - 2' x 3'
- (L) DOUBLE YELLOW THERMOPLASTIC PAVEMENT MARKING LINE, 4" WIDTH, TYPE B, CLASS I, 7" SPACE
- (M) YELLOW THERMOPLASTIC PAVEMENT MARKING LINE, 8" WIDTH, TYPE B, CLASS I
- (N) WHITE THERMOPLASTIC PAVEMENT MARKING LINE, 12" WIDTH, TYPE B, CLASS I
- FLEXIBLE POST DELINIATOR (MATCH COLOR OF APPLICABLE EDGE LINE)
- SIGN POST

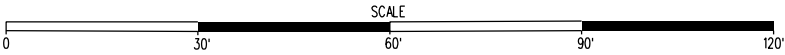


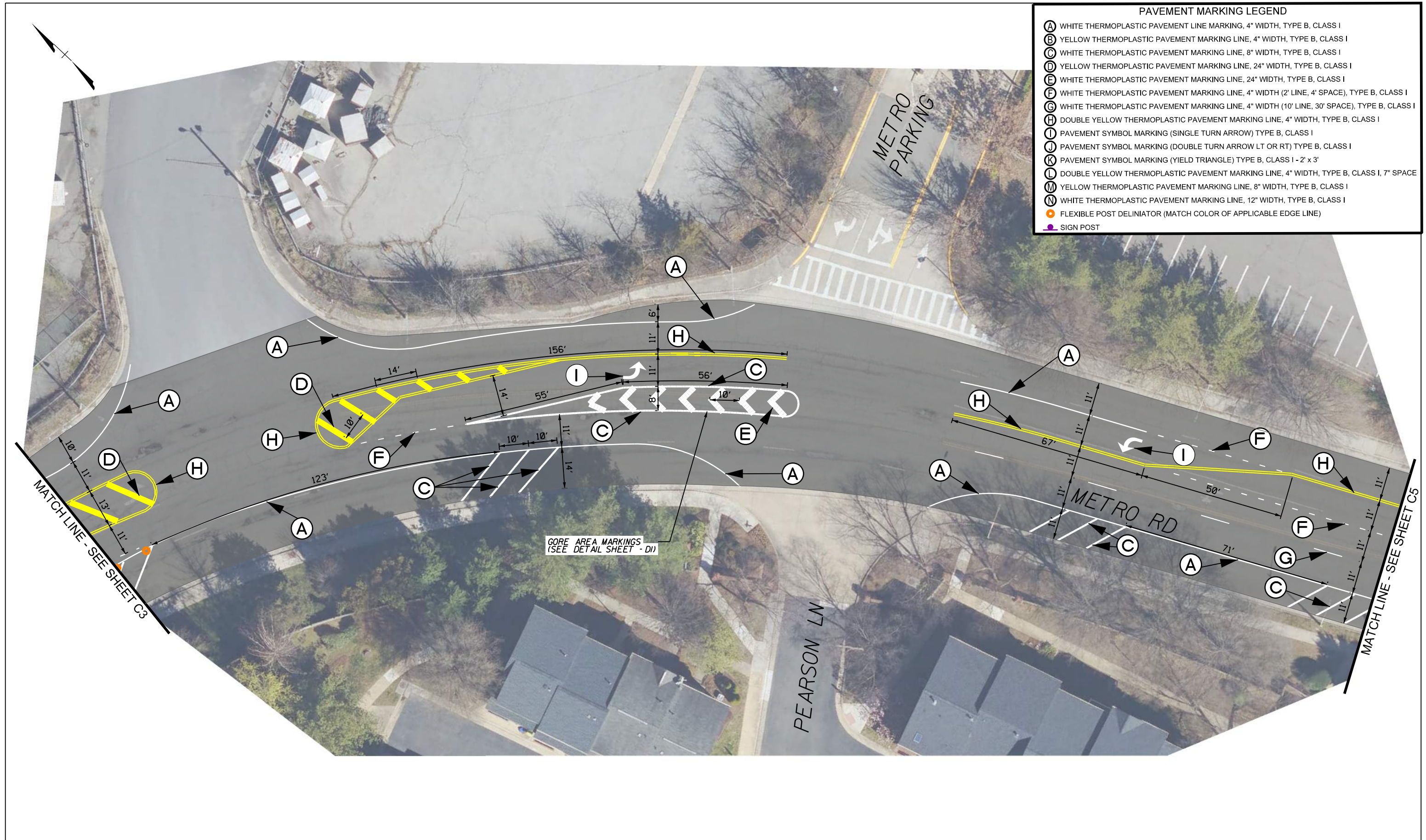
Michael Baker
INTERNATIONAL





Michael Baker
INTERNATIONAL

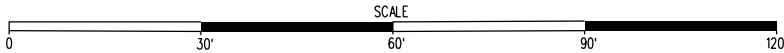




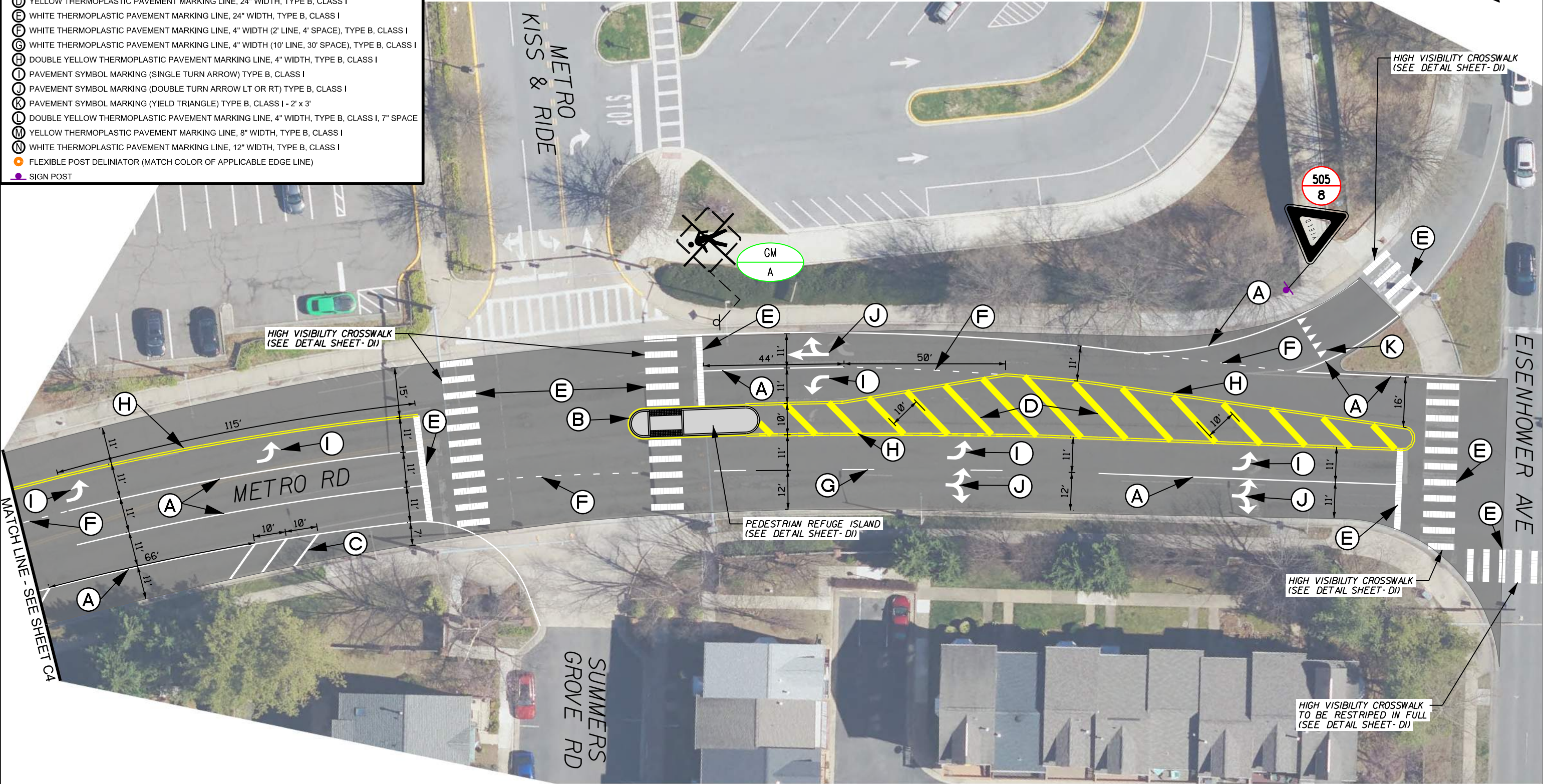
PAVEMENT MARKING LEGEND	
(A)	WHITE THERMOPLASTIC PAVEMENT LINE MARKING, 4" WIDTH, TYPE B, CLASS I
(B)	YELLOW THERMOPLASTIC PAVEMENT MARKING LINE, 4" WIDTH, TYPE B, CLASS I
(C)	WHITE THERMOPLASTIC PAVEMENT MARKING LINE, 8" WIDTH, TYPE B, CLASS I
(D)	YELLOW THERMOPLASTIC PAVEMENT MARKING LINE, 24" WIDTH, TYPE B, CLASS I
(E)	WHITE THERMOPLASTIC PAVEMENT MARKING LINE, 24" WIDTH, TYPE B, CLASS I
(F)	WHITE THERMOPLASTIC PAVEMENT MARKING LINE, 4" WIDTH (2' LINE, 4' SPACE), TYPE B, CLASS I
(G)	WHITE THERMOPLASTIC PAVEMENT MARKING LINE, 4" WIDTH (10' LINE, 30' SPACE), TYPE B, CLASS I
(H)	DOUBLE YELLOW THERMOPLASTIC PAVEMENT MARKING LINE, 4" WIDTH, TYPE B, CLASS I
(I)	PAVEMENT SYMBOL MARKING (SINGLE TURN ARROW) TYPE B, CLASS I
(J)	PAVEMENT SYMBOL MARKING (DOUBLE TURN ARROW LT OR RT) TYPE B, CLASS I
(K)	PAVEMENT SYMBOL MARKING (YIELD TRIANGLE) TYPE B, CLASS I - 2' x 3'
(L)	DOUBLE YELLOW THERMOPLASTIC PAVEMENT MARKING LINE, 4" WIDTH, TYPE B, CLASS I, 7" SPACE
(M)	YELLOW THERMOPLASTIC PAVEMENT MARKING LINE, 8" WIDTH, TYPE B, CLASS I
(N)	WHITE THERMOPLASTIC PAVEMENT MARKING LINE, 12" WIDTH, TYPE B, CLASS I
(Orange Dot)	FLEXIBLE POST DELINIATOR (MATCH COLOR OF APPLICABLE EDGE LINE)
(Purple Dot)	SIGN POST



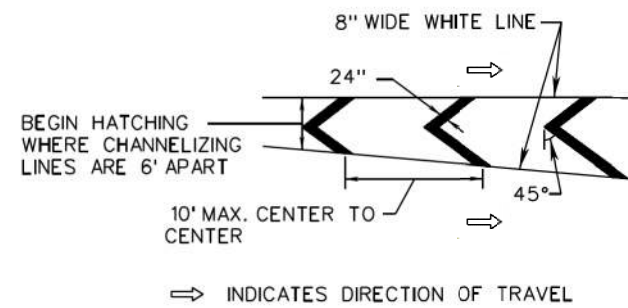
Michael Baker
INTERNATIONAL



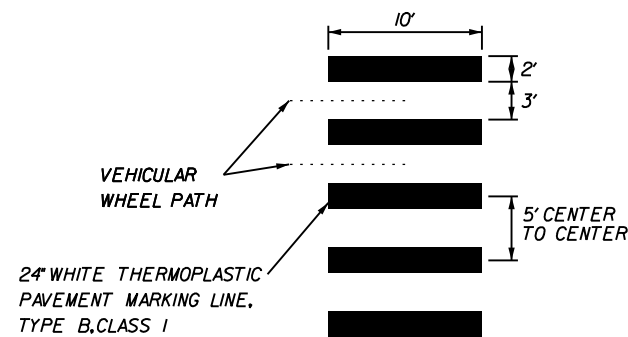
PAVEMENT MARKING LEGEND	
(A)	WHITE THERMOPLASTIC PAVEMENT LINE MARKING, 4" WIDTH, TYPE B, CLASS I
(B)	YELLOW THERMOPLASTIC PAVEMENT MARKING LINE, 4" WIDTH, TYPE B, CLASS I
(C)	WHITE THERMOPLASTIC PAVEMENT MARKING LINE, 8" WIDTH, TYPE B, CLASS I
(D)	YELLOW THERMOPLASTIC PAVEMENT MARKING LINE, 24" WIDTH, TYPE B, CLASS I
(E)	WHITE THERMOPLASTIC PAVEMENT MARKING LINE, 24" WIDTH, TYPE B, CLASS I
(F)	WHITE THERMOPLASTIC PAVEMENT MARKING LINE, 4" WIDTH (2' LINE, 4' SPACE), TYPE B, CLASS I
(G)	WHITE THERMOPLASTIC PAVEMENT MARKING LINE, 4" WIDTH (10' LINE, 30' SPACE), TYPE B, CLASS I
(H)	DOUBLE YELLOW THERMOPLASTIC PAVEMENT MARKING LINE, 4" WIDTH, TYPE B, CLASS I
(I)	PAVEMENT SYMBOL MARKING (SINGLE TURN ARROW) TYPE B, CLASS I
(J)	PAVEMENT SYMBOL MARKING (DOUBLE TURN ARROW LT OR RT) TYPE B, CLASS I
(K)	PAVEMENT SYMBOL MARKING (YIELD TRIANGLE) TYPE B, CLASS I - 2' x 3'
(L)	DOUBLE YELLOW THERMOPLASTIC PAVEMENT MARKING LINE, 4" WIDTH, TYPE B, CLASS I, 7" SPACE
(M)	YELLOW THERMOPLASTIC PAVEMENT MARKING LINE, 8" WIDTH, TYPE B, CLASS I
(N)	WHITE THERMOPLASTIC PAVEMENT MARKING LINE, 12" WIDTH, TYPE B, CLASS I
	FLEXIBLE POST DELINIATOR (MATCH COLOR OF APPLICABLE EDGE LINE)
	SIGN POST



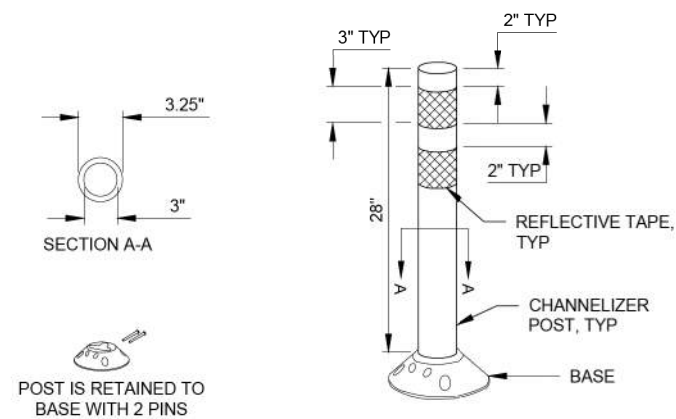
GORE AREA MARKING DETAIL
NOT TO SCALE



HIGH VISIBILITY CROSSWALK DETAIL
NOT TO SCALE



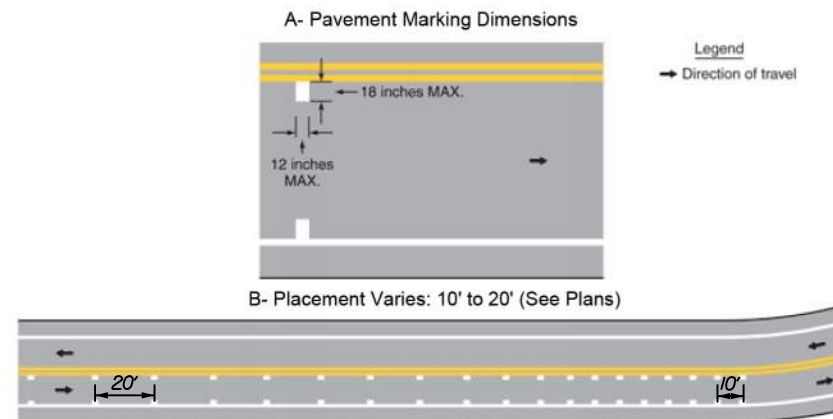
FLEXIBLE POST DELINIATOR DETAIL
NOT TO SCALE



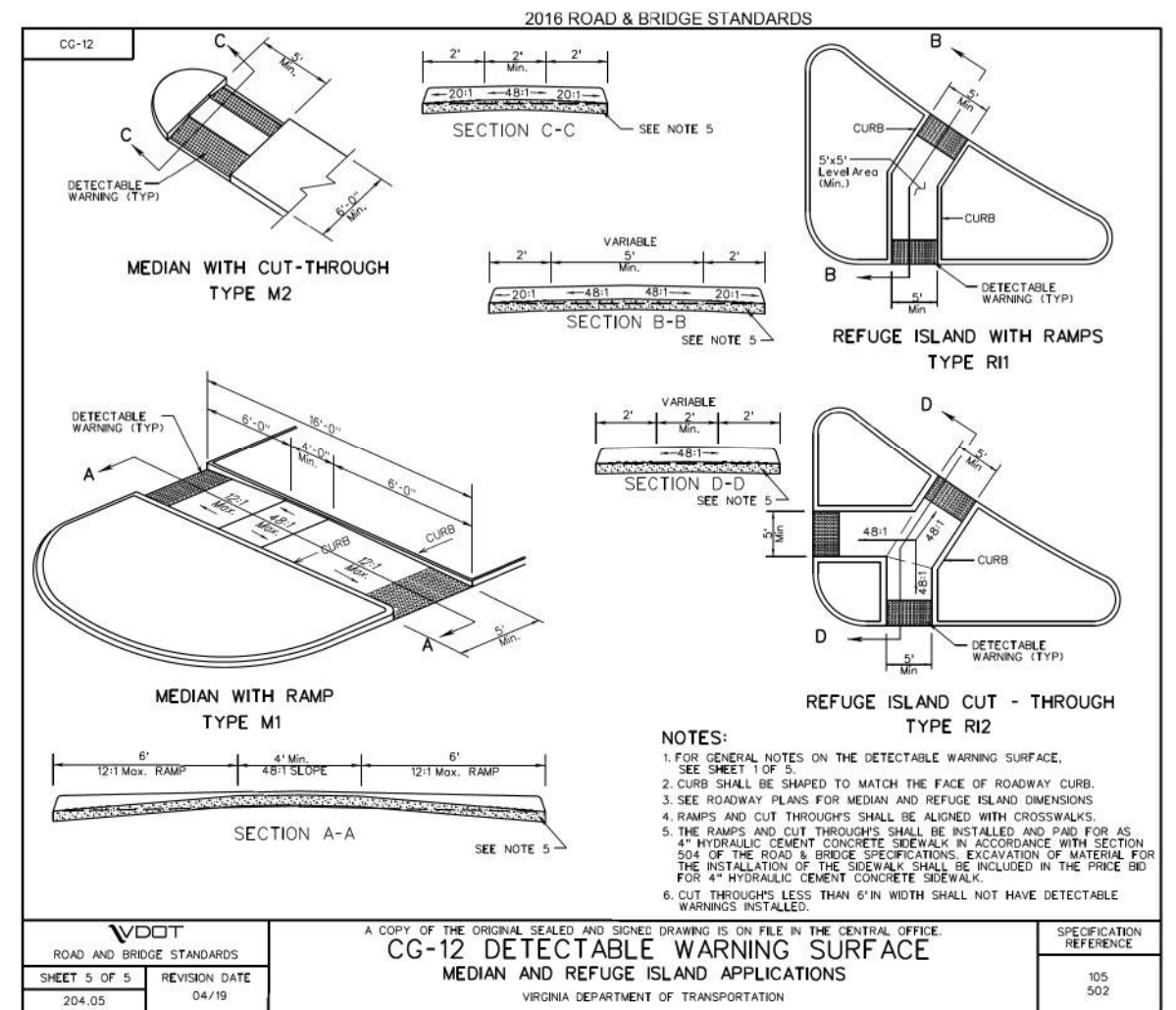
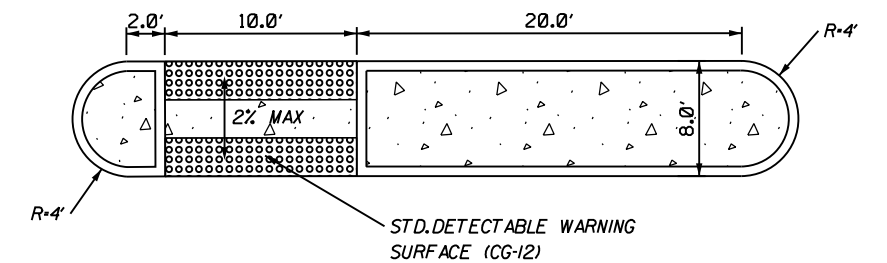
FLEXIBLE POST DELINIATOR NOTES:

1. INSTALLATION TO BE COMPLETED IN ACCORDANCE WITH MANUFACTURER'S SPECIFICATIONS.
2. DIMENSIONS, MATERIALS, AND ATTACHMENTS MAY VARY BETWEEN MANUFACTURERS.
3. COLOR OF POST AND REFLECTIVE TAPE SHALL MATCH COLOR OF APPLICABLE EDGE LINE.

SPEED REDUCTION MARKINGS DETAIL
NOT TO SCALE



PEDESTRIAN REFUGE ISLAND DETAIL
NOT TO SCALE



Michael Baker
INTERNATIONAL