

CAPITAL BIKESHARE



**Department of Transportation
& Environmental Services**
Mobility Services Division



ABOUT CAPITAL BIKESHARE

Capital Bikeshare is the region's bikeshare program. Bike sharing is public transportation using bicycles, and cities around the world provide bike sharing systems as a transportation option for residents and visitors. The Capital Bikeshare system has continued to grow since its inception in 2010 and there are over 800 stations and over 7,500 bikes throughout the City of Alexandria, Arlington County, City of Fairfax, Fairfax County, City of Falls Church, Montgomery County, Prince George's County, and Washington, D.C. As of July 2025, there are 71 Capital Bikeshare stations in Alexandria. Users can pick up a bike in any part of the region and return it to any station. The program now offers e-bikes that can be found at stations or nearby bike racks.

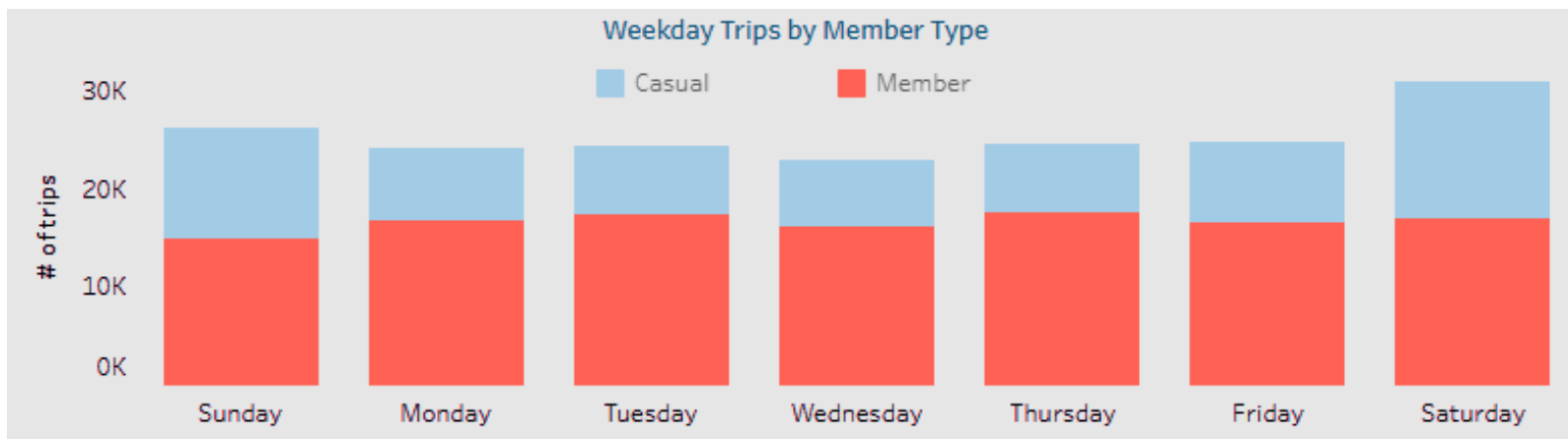
FY 2025 MAJOR ACCOMPLISHMENTS

- The Capital Bikeshare system hit **record ridership numbers** systemwide and in the City in FY 2025.
 - **179,611 total trips in FY 2025**, a 28% increase from FY 2024
 - The City hit its best performing month of all time in **May 2025 with 27,926 total trips, averaging 901 trips per day.**
 - Of the top 10 highest ridership months all time, eight were in FY 2025.
- **9 new stations** were installed and **4 stations were replaced** with new equipment.
- The City purchased **60 new e-bikes.**



FY 2025 KEY METRICS

- Average Trip Time - 23.1 Minutes
- Corporate Membership Purchases - 286
- Annual and Monthly Membership Purchases - 506

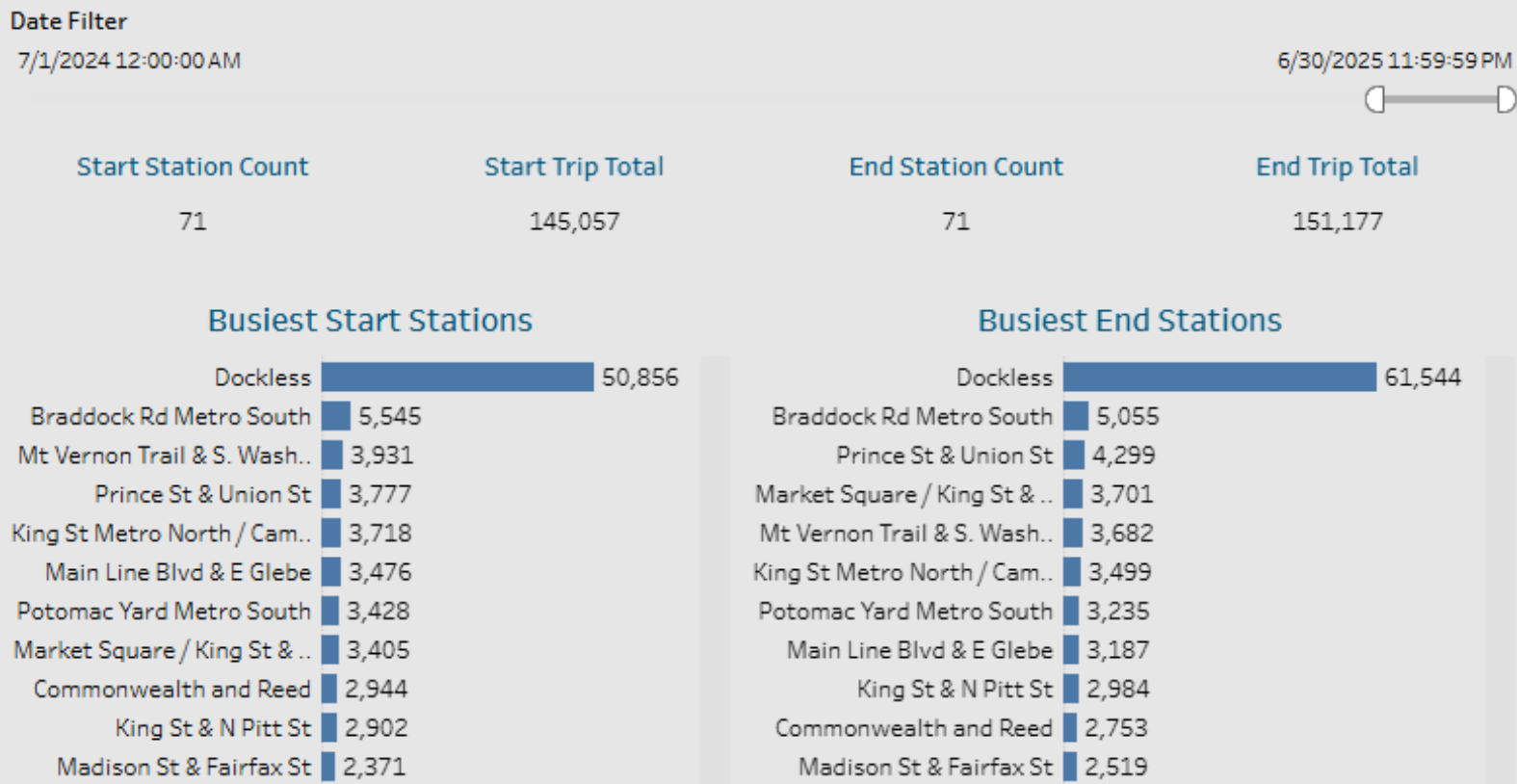


*Through June 30

FY 2025 KEY METRICS

Bikeshare stations with the highest total trips in FY 2025:

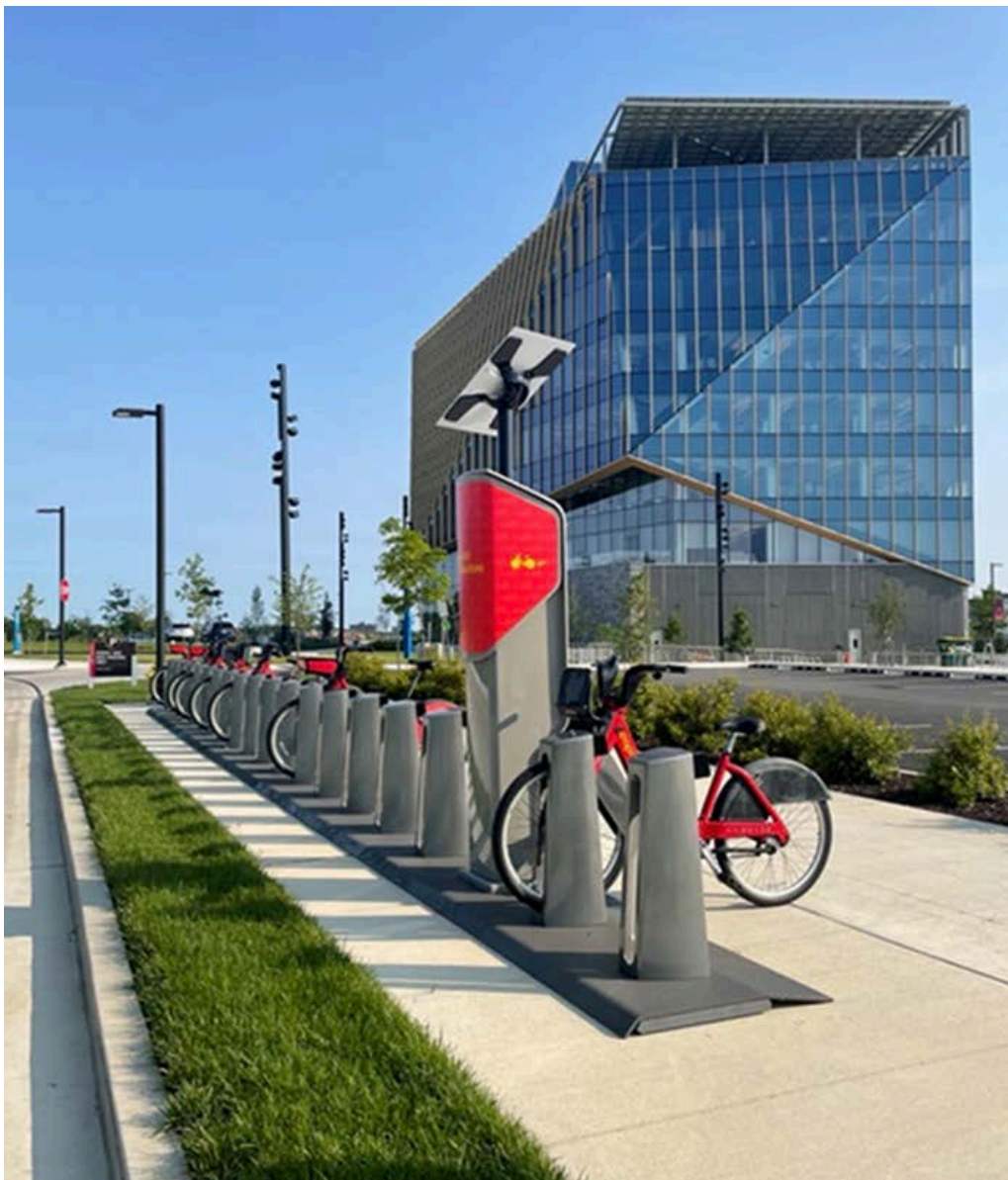
1. Braddock Road Metro South
2. Prince Street & Union Street
3. Mount Vernon Trail & South Washington Street
4. King Street Metro North
5. Market Square / King St & Royal St



FY 2026 MAJOR WORK OBJECTIVES

Bikeshare Station Expansion

Per the Alexandria Mobility Plan, the City will purchase new Capital Bikeshare stations to expand the system in the West End. Staff will use ridership trends, the Alexandria Mobility Plan, and public feedback to determine potential locations and work with the community on the station locations.



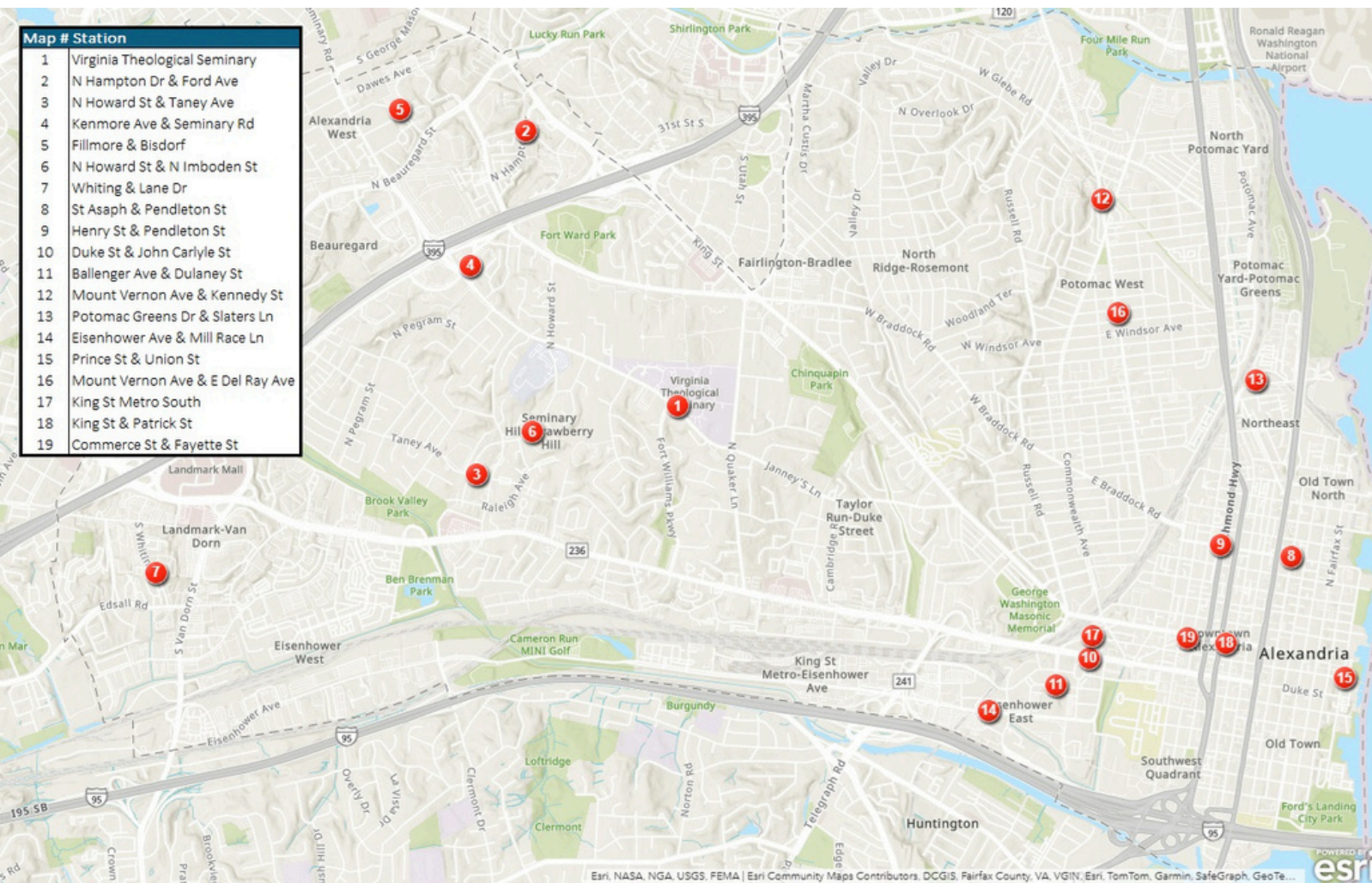
Capital Bikeshare station at
Virginia Tech / University
Dr. & Potomac Ave

FY 2026 MAJOR WORK OBJECTIVES

Replacement Bikeshare Stations

The City will continue to replace Capital Bikeshare stations that have reached the end of their useful life with new and upgraded stations.

Map of Existing Stations to be Replaced in FY2026





FY 2026 MAJOR WORK OBJECTIVES

Expand Electric-Bike Fleet and Charging Infrastructure

Capital Bikeshare added a new e-bike model to the fleet in Spring 2023 that has seen very high ridership. The City purchased its first set of e-bikes in 2024 and will continue to add e-bikes to the Capital Bikeshare fleet to expand transportation options for people in the City in FY26.

The City is evaluating methods to electrify stations to charge e-bikes while docked. This will further increase the availability of e-bikes to riders and decrease vehicle miles traveled for operational staff to replace depleted batteries.





ONGOING PROGRAM MANAGEMENT

Coordinate with New Development Projects

The City will continue to coordinate with new developments to determine Capital Bikeshare contributions and station locations. Staff purchase and install new Capital Bikeshare stations near developments that have provide contributions to the program. Staff also manage the contributions that are provided for operations.

Streamline Contracts with Regional Coordination

The City and other Capital Bikeshare member jurisdictions will work to streamline operations and maintenance contracts across the region and build tools to track compliance.

Data Management

The City will update the public facing dashboard data tools and use the Capital Bikeshare data to make data driven decisions for new station placements and ensure operations and maintenance contract compliance.



ONGOING PROGRAM MANAGEMENT

Capital Bikeshare for All

Capital Bikeshare for All is the system-wide equity program that grants qualifying members low cost access to the Capital Bikeshare system. In FY 2025, there were 260 new Capital Bikeshare for All members in Alexandria. Staff will expand marketing and communications to promote the Capital Bikeshare for All program to increase awareness of the program.

Outreach and Engagement

City staff will work with GO Alex to promote usage and educate the community about the new Capital Bikeshare e-bikes and system as a whole. Staff will assist with the City's Capital Bikeshare corporate membership for employees and promote the program during major transportation events throughout the year.

Regional Coordination

Staff participate in, and chair on a rotating basis, a Regional Coordination meeting with the eight jurisdictions in the Capital Bikeshare system to discuss ridership trends, marketing efforts, expansion plans, and new technologies in the industry.





PROGRAM BUDGET: REVENUE

Source	Prior Years	FY 25	FY 26	FY 27	FY 28	FY 29
Capital Federal Funds (CMAQ)	\$2.5m		\$410k			
Developer Contributions, Operations	\$500k	\$50k	\$50k	\$50k	\$50k	\$50k
Developer Contributions, Capital	\$730k	\$50k	\$50k	\$50k	\$50k	\$50k



PROGRAM BUDGET: EXPENDITURES

Source	FY 25	FY 26	FY 27	FY 28
Operating and Maintenance	\$1.21m	\$1.51m	\$1.58m	\$1.7m
Additional Stations (9) and Bikes	\$680k			
Replacement Stations, bikes and e-bikes		\$1.2m (20) stations)	\$1m (15 stations)	
E-Bike Purchases	\$225k			



RESOURCES & PARTNERS

- [Capital Bikeshare Website](#)
- [City of Alexandria Capital Bikeshare Program Website](#)
- [Capital Bikeshare Dashboard](#)
- [FY 2024 Annual Report & FY 2025 Work Plan](#)



CITY OF ALEXANDRIA CAPITAL BIKESHARE DASHBOARD

Date Filter

7/1/2024 12:00:00 AM

6/30/2025 11:59:59 PM



Station Filter

(All)

Total Trips

179,611

Total Trip Time

4,155,279 minutes

Start Trip Total

145,057

End Trip Total

151,177

Average Trip Time

23.1 minutes

Trip Description Frequency

Starts and ends in Alexandria

Starts in Alexandria, but ends outside the City

Ends in Alexandria, but starts outside the City



0K 50K 100K

of Trips

Station Map

Dockless
Station

