



DEPARTMENT OF RECREATION, PARKS & CULTURAL ACTIVITIES

Ewald Park Survey Highlights

Preferred *Park* Concepts

Park Concept #1: 85 Responses **59%**

Park Concept #2: 59 Responses **41%**

Park Concept Option #1



Park Concept Option #2

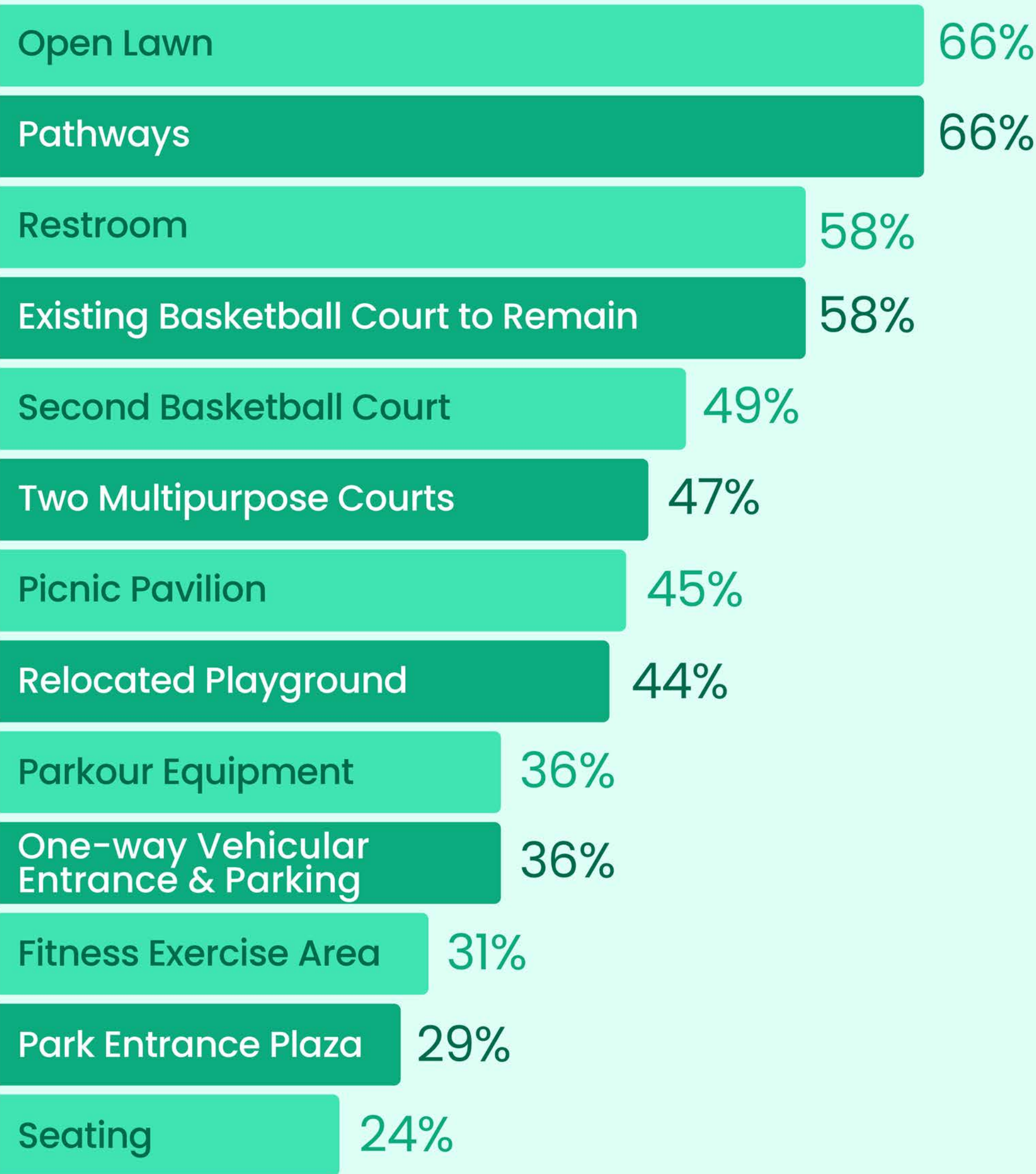


DEPARTMENT OF RECREATION, PARKS & CULTURAL ACTIVITIES

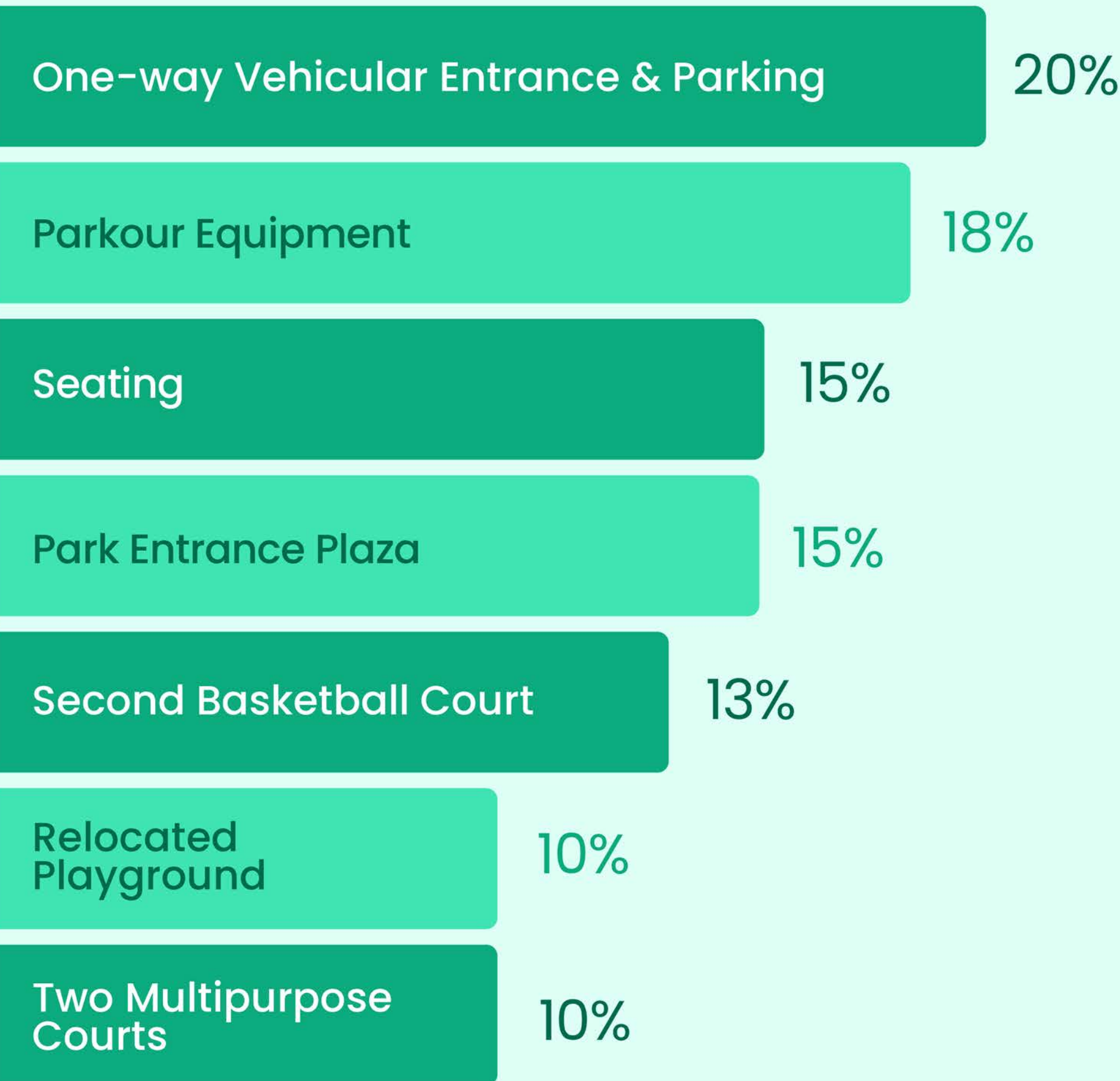
Ewald Park Survey Highlights

Park Concept Option #1

Top-Rated Features of Option 1:

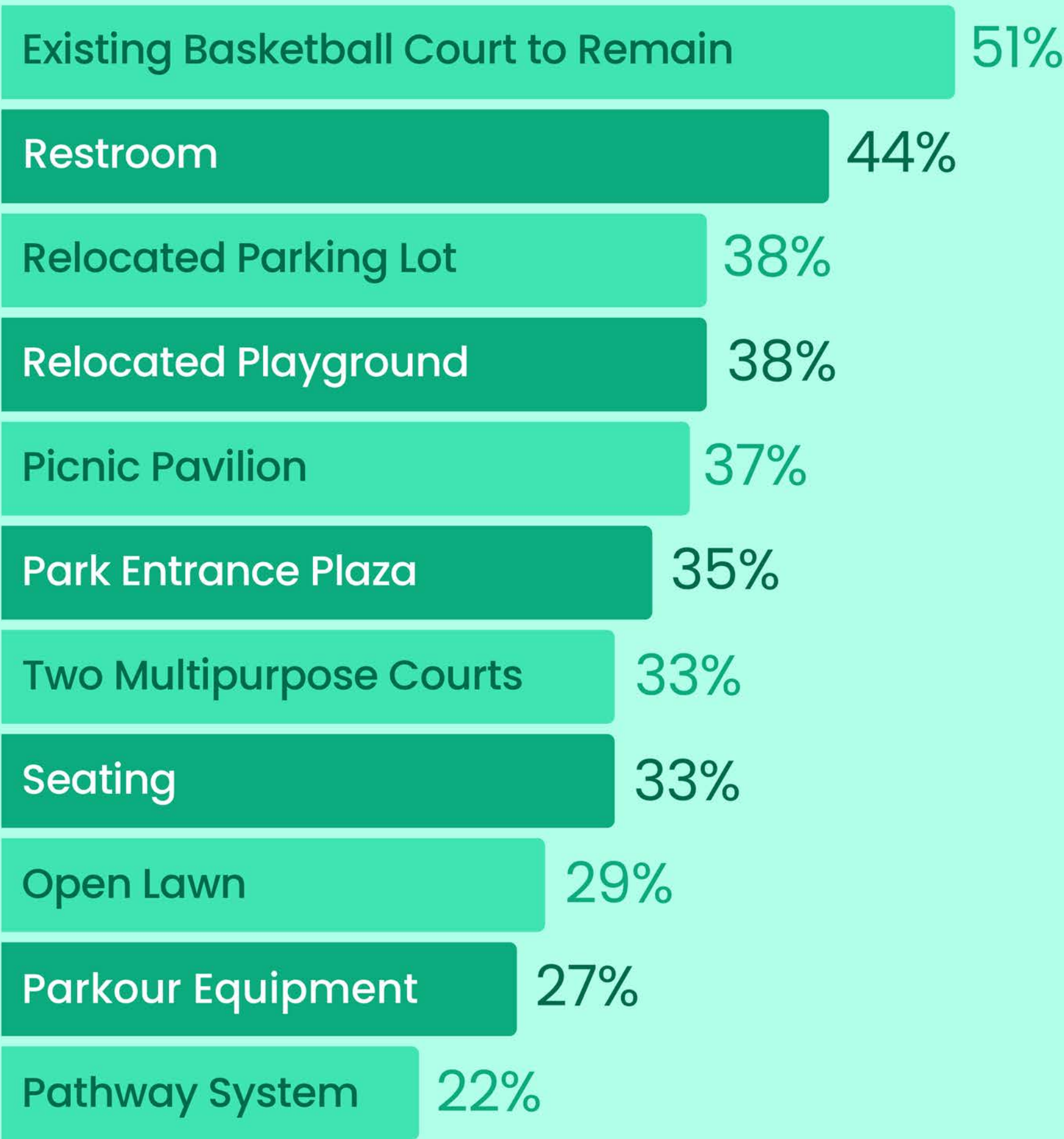


Lowest-Rated Features of Option 1:

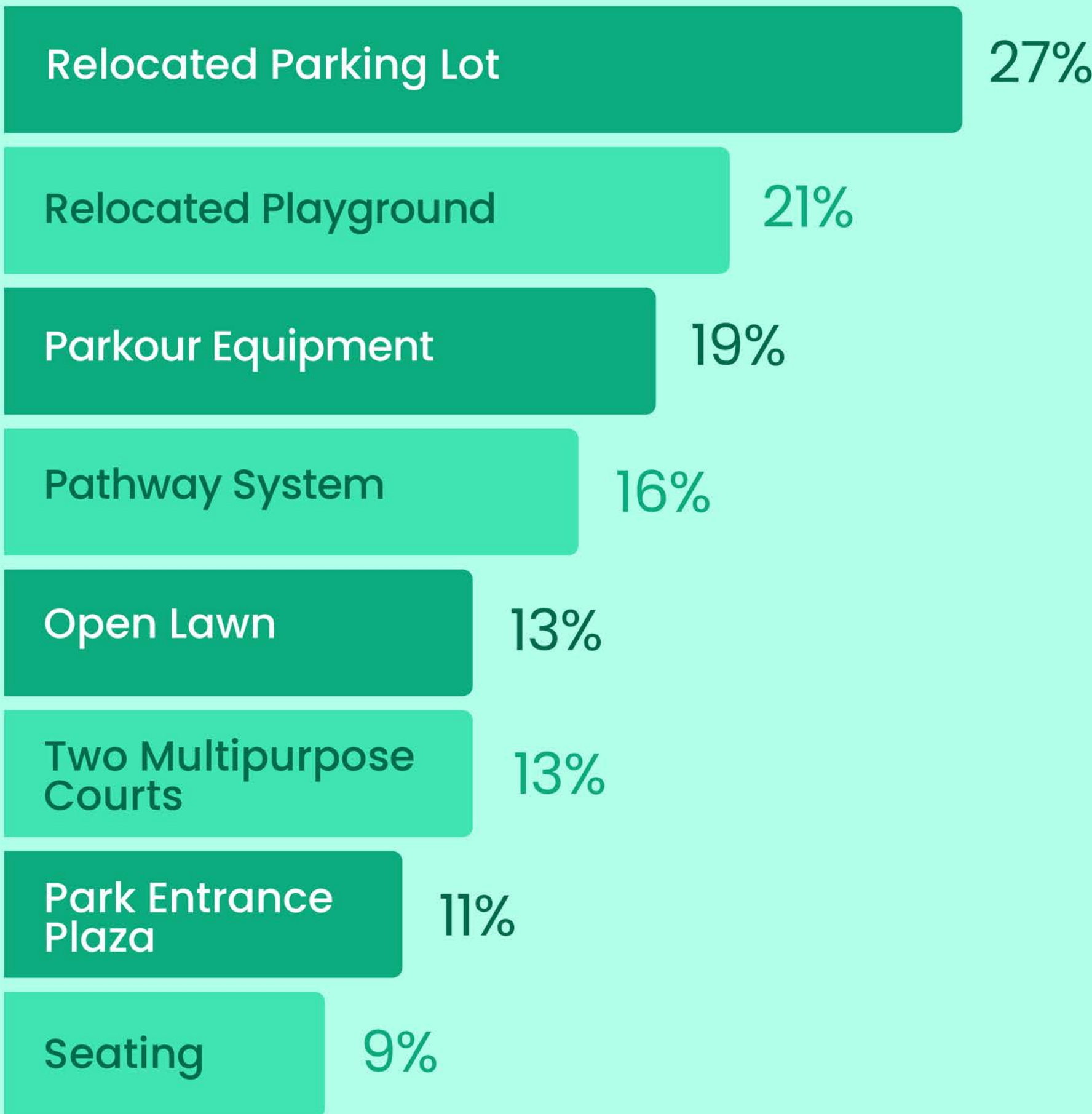


Park Concept Option #2

Top-Rated Features of Option 2:



Lowest-Rated Features of Option 2:





Ewald Park Survey Highlights

Additional Suggestions & Comments:

Option 1: Strengths

- More open space
- Playground positioned away from busy roads
- Inclusion of a second basketball court
- Better connectivity through pathways
- Safer parking lot entrance location & traffic flow

Option 1: Concerns

- Some seating areas are too far/not visible from recreational spaces
- Parkour area is not widely desired.
- Need for more shade & tree coverage
- Visibility & site lines

Option 2: Strengths

- Improved visibility of park elements from the street & within the park
- Better organization of amenities for families
- Safer entrance location & improved pathway accessibility
- More centralized layout

Option 2: Concerns

- Playground being too close to the street
- Parking lot relocation may be costly & reduce green space
- Lack of a second basketball court
- Open space appears more limited
- Less pathways throughout the park



Inclusion of Dark Sky compliant lighting to reduce light pollution.



Addition of more walking pathways around open lawn areas.



Consideration for water features or splash pads due to hot summers.



Ensuring restroom maintenance and proper trash disposal.



More shaded seating areas and picnic tables.



Signage that tells the history of the neighborhood.



Space for informal soccer and other sports.



More greenery, native plants, and trees for shade.



Improved access for pedestrians and cyclists from Duke Street.



Inclusion of fencing around playground for child safety.



Exploring other ways to access the park from neighborhoods located south of the park.

Judy Le

Principal Planner



judy.lo@alexandriava.gov

703.746.5490

Learn more

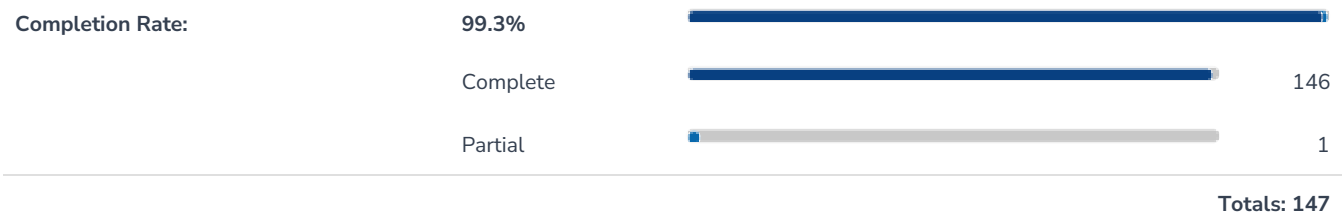
alexandriava.gov/parks/ewald-project



SCAN ME

Report for John Ewald Park Design Feedback

Response Counts



1. The numbered circles in the drawings indicate different park elements for Design Option 1. Please rate the locations of these elements on a scale from 1 to 5, with 1 being the lowest rating and 5 being the highest.



	1	2	3	4	5	Responses
Area 1 - Proposed One-Way Vehicular Entrance & Parking Count Row %	26 19.7%	18 13.6%	22 16.7%	19 14.4%	47 35.6%	132
Area 2 - Park Entrance Plaza Count Row %	20 15.2%	20 15.2%	27 20.5%	27 20.5%	38 28.8%	132
Area 5 - Restroom Count Row %	5 3.8%	3 2.3%	19 14.3%	29 21.8%	77 57.9%	133
Area 6 - Existing Basketball Court to Remain Count Row %	8 6.0%	2 1.5%	26 19.4%	21 15.7%	77 57.5%	134
Area 7 - Proposed Second Basketball Court Count Row %	18 13.4%	11 8.2%	16 11.9%	23 17.2%	66 49.3%	134
Area 9 - Picnic Pavilion Count Row %	8 6.1%	15 11.5%	21 16.0%	28 21.4%	59 45.0%	131
Area 10 - Two Multipurpose Courts Count Row %	13 9.8%	7 5.3%	21 15.8%	30 22.6%	62 46.6%	133
Area 11 - Relocated Playground Count Row %	13 10.0%	7 5.4%	21 16.2%	32 24.6%	57 43.8%	130
Area 12 - Parkour Equipment Count Row %	24 18.2%	18 13.6%	18 13.6%	24 18.2%	48 36.4%	132
Area 13 - Fitness Exercise Area Count Row %	7 5.4%	12 9.2%	33 25.4%	38 29.2%	40 30.8%	130
Area 14 - Seating Count Row %	20 15.3%	12 9.2%	33 25.2%	34 26.0%	32 24.4%	131
Area 16 - Open Lawn Count Row %	3 2.3%	7 5.3%	16 12.1%	21 15.9%	85 64.4%	132
Area 17 - Pathways Count Row %	5 3.8%	5 3.8%	10 7.6%	24 18.3%	87 66.4%	131
Totals Total Responses						134

2. The numbered circles in the drawings represent various park elements for Design Option 2. Please rate the locations of these elements on a scale from 1 to 5, with 1 being the lowest rating and 5 being the highest.



	1	2	3	4	5	Responses
Area 1 - Relocated Parking Lot						
Count	37	18	14	16	51	136
Row %	27.2%	13.2%	10.3%	11.8%	37.5%	
Area 2 - Park Entrance Plaza						
Count	15	14	33	25	46	133
Row %	11.3%	10.5%	24.8%	18.8%	34.6%	
Area 5 - Restroom						
Count	9	12	24	31	60	136
Row %	6.6%	8.8%	17.6%	22.8%	44.1%	
Area 6 - Existing Basketball Court to Remain						
Count	12	3	23	29	69	136
Row %	8.8%	2.2%	16.9%	21.3%	50.7%	
Area 8 - Picnic Pavilion						
Count	13	8	25	39	49	134
Row %	9.7%	6.0%	18.7%	29.1%	36.6%	
Area 9 - Two Multipurpose Courts						
Count	18	12	30	31	44	135
Row %	13.3%	8.9%	22.2%	23.0%	32.6%	
Area 10 - Relocated Playground						
Count	28	13	24	20	51	136
Row %	20.6%	9.6%	17.6%	14.7%	37.5%	
Area 11 - Parkour Equipment						
Count	25	20	29	24	37	135
Row %	18.5%	14.8%	21.5%	17.8%	27.4%	
Area 12 - Seating						
Count	12	11	31	35	43	132
Row %	9.1%	8.3%	23.5%	26.5%	32.6%	
Area 14 - Open Lawn						
Count	18	18	32	28	39	135
Row %	13.3%	13.3%	23.7%	20.7%	28.9%	
Area 15 - Pathway System						
Count	22	37	28	18	30	135
Row %	16.3%	27.4%	20.7%	13.3%	22.2%	
Totals						
Total Responses						136

3. Please select your preferred design option and explain what you like and what could be improved.

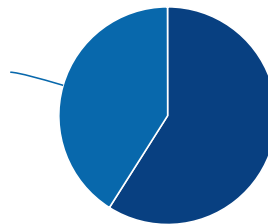
Design Option 1



Design Option 2



41% Design Option 2



59% Design Option 1

Value	Percent	Responses
Design Option 1	59.0% <div><div style="width: 59%;"></div></div>	85
Design Option 2	41.0% <div><div style="width: 41%;"></div></div>	59

Totals: 144

Design Option 1	Count
2 basketball courts are good because they are highly used here. A fence around the playground would make it safer for young children. The seating area closer to the front would make the Parker safer at night.	1
Adding another way to enter via S Jordan Street	1
Totals	71

Design Option 1	Count
Additional basketball court and larger lawn	1
Additional basketball court, playground further from street, and better use of open lawn	1
Best	1
Beter use of space	1
Better flow	1
Better layout, more basketball courts which get a lot of use at this park, better traffic flow for the parking lot. Option 2's parking lot is too hidden within the curve of Duke St.	1
Better parking and entrance locations	1
Better parking flow, playground is farther from busy street, longer pathways to walk, bigger open field	1
Better pathway to walk laps around park. Restroom close to entrance. Second basketball court for kids	1
Better use of space. Better traffic flow through parking lot. 2nd basketball court. More open space withing pathway.	1
Design 1 allows for greater walking space and open area for all	1
Eliminate parkour area; add water feature, keep existing parking lot size & access; don't cut down mature trees.	1
Everything within the park seems better connected with the pathways and locations where everything is, and I like how the parkour park and playground are situated most of all	1
Extra court, larger field, longer path, & restroom near parking	1
Has a better parking lot entrance/exit. Good that the playground is not set away from duke street. Would be nice to have more picnic tables and seating	1
Have the seating area closer to playground.	1
I don't like that the playground is more tucked away and that it is closer to the 7eleven where people that are homeless tend to hang out. However, I also do not like it being right on the street and behind the bus stop. I ultimately prefer this option because the big green space seems more usable in this plan.	1
I like that the playground is not close to the busy road, and I like how the path goes all the way around the area which gives better options from walking/jogging. I recommend adding a bench to the far corner of the open lawn area.	1
I like that the playground is set back from Duke and that the entrance to parking is before Duke narrows. I also like the longer pathway system.	1
I like that the playground, parking lot, restrooms, and entrance plaza are all close together	1
I like that the recreation areas are further back from the road.	1
I like that there is less disturbance in Option 1. I would like to see less impervious surface, less disturbance, more trees and green space, more seating. Please do not have constant lighting here. Police do not understand safe design. I do not want another blindingly bright park that it's under a spotlight all night for no reason.	1
I like the 2 bball cts, where the parking is, the big open space #16, the restroom, the 2 add'l courts; seating is too far away and there's not enough of it. No one wants the Parkour stuff - put it in someone else's park please. You need more seating than just one or two benches in one place.	1
Totals	71

Design Option 1	Count
I like the big open space, but I'm not sure why it is so far from the playground. The courts make more sense where the playground is. For seating, it makes sense to have seating adjacent to the playground so parents can take a break. I would also like lighting to be considerate of light pollution, consider using dark sky compliant fixtures, which limit light pollution upwards.	1
I like the large open space and the playground set right next to the parking lot.	1
I like the open space of this design, and the the playground is tucked away and not right next to busy street. I also like the one way parking lot and flow that seems like an efficient design, as well as the longer path that surrounds the whole park.	1
I like the parking lot flow, extra bball court, and larger open field	1
I like the wide open lawn and putting the play area a safe distance from Duke St.	1
I think we'd want the playground to be further from the Duke Street Death Highway	1
I would move the picnic pavilion over near the circled number 17 to make it easier to get to from the parking lot.	1
Is the pathway section a track? Could it be?	1
Just add a littl	1
Like the large circular walking area but would love an actual track (rubberized flooring) so people can walk/jog and do laps.	1
Large open space, additional basketball court, one way parking	1
Larger open lawn, more pathways, extra basketball court, better vehicular entry and exit.	1
Like multipurpose courts, 2nd b-ball ct, bathroom, Design layout is better overall	1
Like open area and 2nd court	1
Like the addition of restroom, moving playground. Don't like proximity of playground to courts.	1
Love the larger pathway, the playground being farther away from the main road and the second basketball court. The seating could be more centrally located to the courts.	1
Love the open law and the extensive pathways. The entrance bing right at that intersection will be difficult to maneuver and could see accidents happening there.	1
Love the parking direction. Duke is busy and gives simpler access. Like that the playground isn't so close to the street. Like the wide open green spaces	1
Moving the parking lot send like an unnecessary expense, so I'd prefer to leave it. The basketball courts are the one things that are regularly used and there's often a need for two courts, so it seems obvious to include another. There's also a lot of people sitting near the courts, so having a picnic area nearby seems logical, as long as visibility and access to the courts is good. . We like to go and watch people play basketball with our toddler, and occasionally attempt to play ourselves. I like the walkway winding through the whole park - walking in a circle around one area feels boring and unappealing to me. I like the additional entrance (4) because we come from Ingram St and I'm always jumping the fence because I don't want to have to walk all the way down to the court entrance. The playground is away from the back - which I think we all dislike about the current park - but far enough from the street that you don't feel like your child is in danger. As long as there are go	1
Parking is closer to recreational activities (I think)	1
Parking lot seems bigger and field space does as well. I think the playground should be closer to the pavilion so parents/caregivers could be close to the gathering space while watching their kids play.	1
Pavilion should be more centralized.	1
Totals	71

Design Option 1	Count
Playground closer to the front of the park	1
Playground needs to be near parking lot. Parents usually have a lot of stuff to tote. Picnic area should be near playground and parking lot as well. Trail system is much better circling entire park, more trail to walk and it also keeps the field from getting lost at the back of the park and potentially becoming misused. Also, please please please have restrooms near the playground too.	1
Put picnic area close to playground, afford an option for left turn exit from the park	1
Seating closer to the playground and separate seating near the 7-11 stairs for people who want to eat or hang out away from the playground	1
Second basketball court	1
The addition of the second basketball court is vital! Also love the addition of hhe new multipurpose courts. The playground is a good distance away from the street.	1
The current layout is not bad, it needs improvement. This looks to be a great way to do that.	1
The green space away from the road is nice, seems like the picnic pavilion could be closer to the restrooms.	1
The lawn is bigger and the playground isn't right next to the street. I do think the seating is too far away from the other features.	1
The parking lot is safer (the single exit/entry in option 2 is on a blind hill). The playground is farther from the street. The open lawn is bigger & better shaped for events & games. Having seating/benches next to the playground as well would be nice.	1
Walking path on the west side of the parking. People are not going to only follow the one path on one side of the parking space.	1
Water feature instead of parkour	1
We should have walking path going around the entire park and the open lawn should be utilized for a native and community garden. Please only plant native trees/plants/flowers. No one is ever using the open lawn now. Please add water fountains and bottle water fillers.	1
Wish there could be a third multipurpose court. Making sure the park is well lit would be crucial for it's success	1
Would be better if the parking lot was moved to the other position	1
except parking -like 2 parking betterbetter	1
makes more sense with current park	1
more open and better access to park	1
more walking space/paths, open field appears more usable (soccer, etc)	1
possible more seating options aside from the pavilion	1
safer ingress/egress, better open lawn	1
second basketball court (a must!), parking remains (save the existing trees!!!)	1
seems to have larger open space, I would put the court next to the parking to keep the paved areas together.	1
two multipurpose courts, two basketball courts, and one way parking	1
Totals	71

Design Option 2	Count
	1
2	1
Add more walking paths	1
All features are closer to high visibility on Duke St. Placing features to the back poses a safety issue.	1
Alyia Gaskins is a race-baiting grifter & a depraved Marxist	1
Better mix of locations, like park entrance	1
Better organized	1
Design two has less open space for drug use	1
Fewer ball courts, more space for people to exercise	1
Here's my feedback	1
I feel like this set-up is less likely to attract unwanted activity and the parking entrance is less likely to cause accidents.	1
I like how the parking lot and park entrance plaza are seperate. However, I prefer the playground location in design 1, as it keeps the playground away from Duke street.	1
I like it because the buildings are more centralized. However, I like the pathway system in Option 1 better. It would be nice if the pathway in Option 1 could be applied to Option 2 with paths along the trees along 14.	1
I like that the amenities are more centralized for families and not spread out	1
I like that the park is closer to the view from the street and not hidden like it is now. And if we could improve safety that would be great	1
I like the playground lower and with better visibility	1
I like the positioning of the play equipment better. Something needs to be done still in option two in regards to the Pavillion and open field to stop it from becoming a well positioned drug hot spot and encampment. As it is currently	1
I like the separated parking lot and walking system. The field is smaller but better utilized. I feel that Parkour inspired features could be located in all areas. This can be achieved by engineering from a position of sound/sturdy architecture.	1
I like the split open areas, which seems to provide more options for those who wish to use/enjoy the open lawn areas.	1
I like this design better but would love to see areas for soccer	1
I really like this design due to the two open grass spaces. Hoping there's a fence between the playground and duke street. If possible, I STRONGLY recommend the entrance to be on S. Jordan just due to how busy and how fast cars on Duke St can be.	1
I would prefer more natural spaces, but I prefer this design and feel it's a better match for the space	1
If there is a way to move #2 closer to parking, and potentially keep a 2nd court (maybe next to the parking?)	1
Invites non-car access. Two open fields create better separation of uses.	1
Just a better design	1
Layout is better	1
Totals	58

Design Option 2	Count
Less area dedicated to parking are open lawn.	1
Maximizing visibility for the playground is important for safety and increased use. Safe visible walkable entrance is also crucial.	1
Option 2: The amenity locations and layout for Design option 2 are much more logical. There's better park pedestrian connectivity and synergy between the amenities/programming.	1
Parking in option 1 is too disruptive/large. There's no need for a second bball court or parkour.	1
Parking lot increases chance I will pull in	1
Parking lot location	1
Parking, more than one open area options; playground better street visibility; but wish it could squeeze in a second ball court.	1
Picnic and bathrooms seemsto	1
Placement of parking lot, restroom and pavilion	1
Playground location and entrance away from driveway	1
Playground up front	1
Playground visibility	1
Prefer parking and playground location but like second basketball court in design 1	1
Prefer the playground visibility	1
See "additional feedback" below	1
Seems to meet the need for the community.	1
The circular path is better for walking around. Two open law spaces allowed for multiple activities by many groups of people. A second basketball court is unnecessary.	1
The entrance seems better a little further up from Jordan. More green space.	1
The entrance/visibility and parking lot location	1
The open field and walking path in option 2 would work well as a dedicated soccer space or a meandering path through natural areas with interpretive signs that talk about local history or ecology, or both.	1
The park entrance should include an entrance closet to Jordan where a number of people will be coming from. Ideally the playground would be a bit farther from Duke, perhaps reversing the parkour and playground.	1
The parking looks a bit safer in this option	1
This design better fits the location and ensures an adequate use of space across activities.	1
This is the better option	1
Visibility from road	1
Worried about the homeless population that already tends to congregate at this park.	1
better flow	1
Totals	58

Design Option 2	Count
facilities closer to street	1
i love the playground being closer to the street for visibility. but three improvements are needed: 1) the entrance plaza should be closer to Jordan street, where there's a major bus stop and crosswalk that people will use to access the park - hardly anyone walks to this park from further east on Duke, and those who do will enter at the parking lot. 2) the trail system should extend around the lawn and multiuse courts to connect the full park in a larger loop, as is done in option 1. 3) the parking lot location will allow for left turns into and out of the park, which will be dangerous on Duke street. the entrance to the lot should be designed to enforce right turns only, both in and out.	1
longer pathway and 2nd basketball court is great	1
prefer the privacy and safety for the residential area behind the park	1
seems like more open space	1
Totals	58

4. Is there any additional feedback you'd like to share about the design options?

ResponseID	Response
1	This is typical of the city, neither option has as an outdoor pool. Del Ray has a pool, Old Town has a neighborhood outdoor pool. Why is the most populous area of our city; West End, Duke Street lacking an outdoor swimming option? Folks shouldn't have to get in their cars to go up to Braddock and King to access swimming in the summer. Please change the design and add a pool to the back of the park. The more people that use the park, the less drugs will be used.
2	The parkour area should have a reasonable amount of open space surrounding it and could be joined with the playground without any barrier between the two, and there should absolutely be a sign next to the parkour area stating what the parkour park is and who should and should not be using it.
3	Design 1 has much larger walking pathways and green space. It also does a better job of utilizing existing structures and keeping the playground away from Duke Street.
5	Please consider using clover instead of conventional grass. Please make sure there are signs for pet owners to have their pets on leash at all times. Please consider using sustainable and local plants. If there is space, where there is seating, it would be nice for it to be more of a zen, meditation space or spaces where you can gather and face other people (benches that face each other)
6	There is a lot of mowed grassy areas. I understand the desire to have multi-use lawn areas for people to hang out, but I would like to see areas near Duke (where people aren't going to want to hang out) and around areas where people won't be using the space to restore pollinator / native plant habitat. I would also like to see the park use Dark Sky Approved lighting. It would allow for important safety lighting of the park while not contributing to light pollution. Survey design: questions 1 and 2, I didn't answer these because it is too confusing to figure out what you're asking. Highest what, Priority? Elevation? Desirability? If you want more actionable insights on your surveys, may I recommend this book: https://www.amazon.com/Surveys-That-Work-Practical-Designing/dp/1933820535
7	Currently, the park is used by informal soccer players during the spring and summer. I am concerned that the park redesign will remove the option for people to play informal soccer games. I would be nice if the swimming pool was brought back to the park. With a redesign to make the park more friendly, more people would probably use the swimming pool. All of the city swimming pools are located east of Quaker Lane, so it seems as though west end residents are being discriminated against.
8	Dark Sky approved lighting. Making sure most of the space is visible from Duke St. Right now you can see most of it which reduces safety and makes people forget what is there. More interesting features than lawn please. Like rain or pollinator gardens or other interactive features along the paths. Either nature, music, or art based. (See Chessie's Trail in the Franconia District Park of Fairfax County.)
9	Please install dark sky friendly lights for all courts so that they remain useable in winter months.
10	- please use darksky approved lighting - adding more trails to option 2, looping around the multiuse courts and by the lawn, would be good. the lawn as currently arranged seems mostly like wasted space - additional connectivity is needed for the neighborhood south & west of the park. a south-facing entrance would be great if possible, or a west-facing entrance onto S Jordan Street. If nothing else, please ensure that pedestrians can enter the park at the corner of Duke & Jordan and not just at the entrance plaza. Many people arrive here via the bus stop at this corner, and that will grow once Duke St in Motion is implemented. It'd annoying to have to walk half a block from the bus stop to the entrance plaza
11	It would be nice to have more seating (the legend implies there will be seating at only one location)
12	Design option 1 seems like a better use of space. It manages to fit an extra ball court and has a larger field. It's nice to have a pathway that encircles the entire park. I like that the restroom is near the parking and still centrally located. I think the pavilion could benefit from being closer to the restroom, and I wish the playground and parkour equipment were not tucked behind the 7-11.
13	There are already so many "housing challenged" people sleeping there. The restrooms and other changes will, I fear exacerbate this.
14	This is an extremely confusing format for a survey.

ResponseID	Response
15	I would like to see good tree coverage and a visible public safety effort in the space
16	For this park to be properly utilized, the City needs to address the safety concerns around the area. This space should be used as a community gathering spot, not an additional loitering lot for the 7-11.
17	I would like to see an entrance from the neighborhood, and if not greatly improved walking and biking infrastructure connecting the park to the neighborhood.
18	Thank you for all your hard work and engaging the neighborhood!
19	I like how much more walking path space there is in design 1 but would want to ensure there is adequate lighting so it feels safe to use (esp. after the attempted abduction in holmes run) & given the elevation from the main street. Unsure how much noise could be expected from the placements (esp. parkour, playground, and multiuse courts) - closer to houses than in #2 Unclear from the image if the pedestrian access is through parking, which isn't pleasant if walking from nearby more seating throughout, esp. not necessarily so far from entrances In option 2: like that pedestrian access is not conjoined with parking Is there a reason why the open field in #2 isn't surrounded by walking paths? #2 feels less efficient and thoughtout
21	Parking entrance near the busy intersection is a problem with design #1. We are delighted that the project is going forward - much needed in that area.
22	Please keep the playground away from the road
23	No
24	no
25	In design 1 the playground is further back from Duke St which is beneficial for kids playing. The pathway is also larger which makes better use of the space & will encourage more people to use the park. Lastly, the parking lot design will help keep Duke St congestion free with separate in & out.
26	Stressing that option 2's parking lot entrance would be located in a curve of Duke St with low visibility which could cause traffic problems or accidents.
29	Please make sure there r plenty of trash cans available. Maybe have only 1 multi court and one just for PB. The PB courts at Chinquapin are full of cracks(easy fix) and plenty of courts at TC/ Cinq. Thank you for making more updated parks on the West end
30	I'm looking forward to seeing it in action! We need a safe, family-friendly green space that meets the needs of both adults and kids. I especially like the large open lawn; a single large space is more flexible than several small spaces.
32	Wondering if there's a possibility to have the entrance and parking lot entrance to be off south Jordan instead. Duke is just way too busy
33	Some sort of signage talking about the history of neighborhood would be great no matter what the design.
35	See above comment
36	In the design option one, I like the one-way vehicle entrance. I am not sure if this location might cause congestion due to proximity to the intersection. The placement of the restrooms seems efficient by being some what centrally located to the playground, courts, and open area. Keeping the existing court makes sense and adding an additional gives option space. The playground and parkour area placement away from the main street feels safer opposed to the proposed location in option 2. I don't see any seating icons (orange squares) around the playground which would be beneficial to parents watching their children. The open lawn area seems more efficient and a better use of space in option 1 opposed to option 2. The pathway in option 1 is nice as it allows individuals to walk the perimeter of the park which gives more option space and maximizes the parks intended use. All in all, option 1 appears to flow better and maximizes usage of the park.
38	I'm not sure what's in the "Fitness Exercise Area" but I'm hoping for exercise equipment. Overall I like the layout and features of Option 1 best. I have heard parents say they didn't use the old playground because of drug use in the back corner of the park. It needs to be solved or the playground move closer to the front of the park.

40	Fence around playground to keep kids safe from Duke Street traffic?
41	Just that the entrance to the park if possible should not be on Duke. It may be too dangerous with the bus stop there. Especially if someone tries to make a left out of the park. Thanks for your hard work.
43	N/A
45	Nobody wants parkour. The playground will mostly attract small children. Having it be very visible is preferable to having it hidden from the main site line.
47	Just a little water play to option 1 and it's perfect!
48	No but I look forward to a refresh for this park - I pass it almost every day and it just seems sad!
49	No, thank you for opportunity to review!
50	Option 2 seems To have easier access for the disabled.
52	Design number 1 offers excellent entrance area. A third multipurpose court would be great. Would hope that lighting will be ample to make people feel safe to use the amenities after dark especially in the winter months.
55	I think the parking lot redesign is very important, Duke St. is a busy street with heavy traffic and the unnatural parking lot entrance seems unsafe during busy periods.
57	I wish there was a way to enter the park from the neighborhood
65	I really like the fitness areas and longer walking paths. I also think it makes more sense to keep the parking area where it is.
66	Is a second basketball court possible with option 2?
67	Safer access along the sidewalk is needed, and a parking lot at 90 degrees with only one entrance/exit so drivers see and yield to pedestrians.
69	Option 1: - Better access in and out of the parking lot - Parking lot requires no costly relocation - Parking lot is very visible from the street deterring crime and misconduct - Open field is away from kids area minimizing danger to kids from stray balls - However, courts are close to childrens area which can increase danger from stray balls - Option provides a second court - high usage - very important - picnic area is not in an optimal space backed in the corner away from facilities Option 2 - Tight parking with one entry/exit point can cause traffic - Moving the parking lot will be costly - Plan does not include ample pathways - Picnic area is in a better spot close to both the open area and the playground - potential for a dog park in spot 14? - better park entrance from the sidewalk/street (2)
70	With how hot the summers are the west end really needs access to splash pads
73	One entrance isn't enough - it's inconvenient for park users and won't slow down bad guys. I'd put additional seating along the path near the #17 and under/near the trees near #12 but get rid of the Parkour stuff. If folks are worried about too much light along the back "wall" maybe you could have tall lighting along the path or that area to use until 10pm, but then have some lower lighting down near footpath level for security but not so intrusive. What's the "fitness area" #13 all about - it's never described anywhere.
74	Please have shade for the playground and seating; ensure good sightlines to the playground to stop it from being an attractive place for drug use, etc; keep the largest possible open field
75	Walls and vault boxes for the Parkour area

ResponseID Response

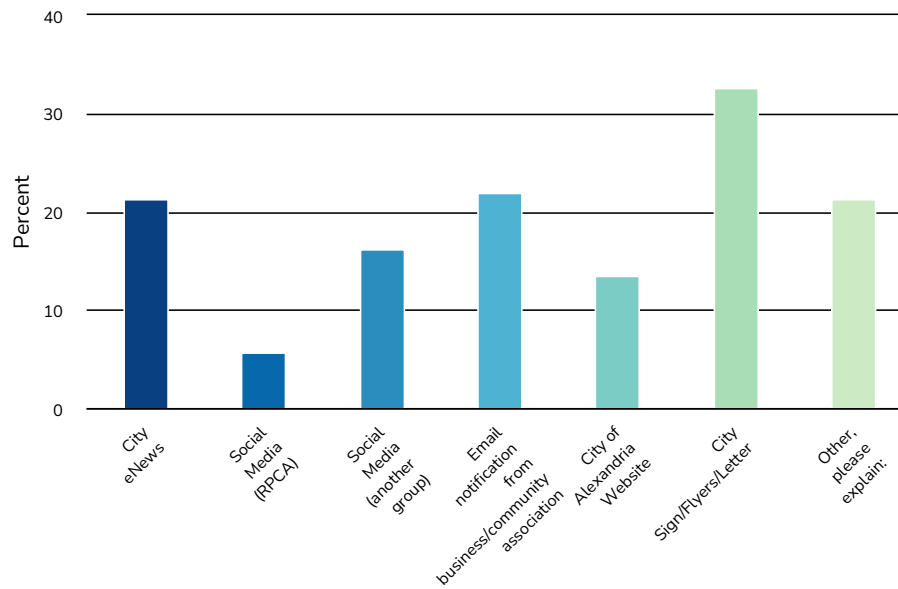
76	We prefer design option 2 because the tennis/pickleball courts are further away from our house which is directly behind the existing playground equipment. We would like to see more trees and shrubs to camouflage our property to discourage on-lookers which is the problem we have now with teens and adults loitering around the playground equipment. (I have complained about the lack of camouflage we have since the shrubs were removed a couple of years ago.) We are additionally concerned about the noise that a pickleball court would bring and wonder if there would be a time limit for people using this court late in the day/evening.
77	Please keep playground and parkour as close to the street as possible.
78	new fencing on south side along with tree line maintenance the tree line contains dead and/or infected trees, the moss/ivy is growing into the residential areas and the lack of trimming of branches allows the squirrels to navigate on fencing and residential roofs, also tree branches fall during weather events into residential area. Summary: south tree line and fencing needs more tlc and something to reduce bat and squirrel activity
80	Parkour equipment adjacent to the playground will be tempting for kids who are too young to safely use the parkour equipment. If they're adjacent, maybe make sure to have a physical barrier like a fence between the two.
81	I'd like to see the pathway extend to around the open space in design 2. More walking paths like Ben Brennan.
82	I think there should be additional seating around the open lawn area. On Design Option 2, I think the new location for the parking lot could make exiting difficult due to the lack of a 3rd lane at that part of Duke Street. (The 3rd/bus lane is still there where the existing parking lot entrance is, so that's better.) I also don't particularly like putting the playground right next to such a busy street. Finally, neither option really captures some of what the community has asked for, such as a splash pad.
83	Please be mindful to keep structures far away enough from the bus stop. Add visibly to prevent crime. Anti-litter signs and multiple garbage cans. Walking path surrounding the perimeter of the park. Bathroom maintenance regularly and water fountains/one for a bottle water filler. No one currently uses the big open field of grass. This is a good space for a community fruit and vegetable garden. Also please use only native plants/trees/flowers.
84	Had consideration been given to incorporating a sand volleyball court instead of 2 multipurpose courts?
85	The cost to move the parking lot to a less convenient area (without the third lane on Duke) seems illogical and will hurt the existing trees and buffer shrubs. We need to retain the existing trees for shade and to have established trees (new planting is great- sure, but doesn't have the same impact). Second basketball court will get so much use. More open space in option 1 is better than in 2. Eventual addition of restroom will make more functional for picnic and family use.
86	Design Option 2 places all amenities as close to the street as possible. This design allows for better visibility from the street, enhancing safety for everyone. Option 1 prioritizes the parking lot; i.e. that's what you see from Duke St. instead of the park itself. Eco-City is about reducing vehicular presence! Option 2 seems to disguise the parking lot a bit.
88	Multiple picnic areas would be lovely
89	I strongly prefer Option 1 over Option 2. Vehicular access and circulation is more efficient, children's play areas are away from Duke Street, and the open space is larger and also more protected from the roadway. The pathways are also longer in Option 1 which provides a longer walking route.
91	No
93	Option 1 seems more open and a better use of the space for everyone.
94	I would love to see some water features and lighting
95	I am so excited that you are acting on the concept of a Parkour area! As a Mom whose son LOVES parkour and can not find enough places to practice, this is fabulous. I can't tell which area has a bigger area, but I go for that one!
96	Two way entrance and exit to parking lot for option 1.
98	Playground too close to street in Option 2.

ResponseID	Response
100	Thank you for including Parkour Equipment in either option! Great for all ages to exercise.
101	.
102	The addition of another basketball court is a great idea. A fence around the playground, and an area for younger and older children on the playground would allow for more use by more families. Providing a walkable place for families to play be together seems much more important to the neighborhood we live in than parkour equipment.
104	Would be mindful about basketball court proximity to parking lot in terms of stray balls hitting cars
105	more playgrounds should be priority because it makes the park family friendly. the parcour stuff makes no sense
107	My biggest issue with both plans is that the "entrance plaza" isn't located where pedestrians actually enter the park. The current location means pedestrians arriving at the park from either direction have to walk half a block to get to the entrance. Most will just skip it and enter by walking over grass at the corners of the park Most people coming here arrive by bus at the Duke/Jordan stop, or walking either from S Jordan or from across duke using the crosswalk at the Duke/Jordan intersection. the pedestrian entrance should be oriented toward the Duke/Jordan bus stop and intersection. A smaller entrance path should be provided to welcome the smaller number of people who arrive on foot from further east down duke street. Those who arrive by car will of course just enter at the parking lot, so the plaza location doesn't impact them really.
109	Pedestrian/bike entrance needs to be clearly away from vehicular entrance/parking area. The main feature I like in design 1 is the walking path - should encircle the entire area so that walkers can make a larger circuit; should incorporate signage to indicate how many laps = a mile.
111	The playground should not be being 711
112	n/a
113	Have parkour and playground a little farther to avoid children getting hurt
114	Holistically, both designs have good/bad elements. The playground and bathroom should be closer together and separated from parkour equipment, which is loud and will be challenging to hear children's voices over the noise and leads to a loud playground environment. Similarly, the multipurpose courts should have distance from the surrounding homes so that those residents are not subjected to constant pickleball noise.
115	Needs more trees. A lot more trees. Even if they have to be put on the open lawn.
116	The park entrance connected to the trail system is much better than as part of the parking lot entrance.
117	Why couldn't pathways extend to back of park like in design #1 ? Moving parking away from Duke/S. Jordan intersection will make that intersection safer
119	A forested area could be nice.
120	
121	The path in #1 will protect the grass in the open lawn. Picnic area should be close to playground so that parents can supervise small children. Maybe adjust the location of the multipurpose courts as shown in #2. Offer a way to exit the park and go West on Duke St. maybe where item 3 is shown on Option 1, allowing exit onto S. Jordan.
123	Light fixtures should be carefully considered with regard to light pollution. Consider dark sky compliant fixtures with full shielding to prevent light escaping upwards, warmer light colors which contribute less to light pollution, motion sensors, etc.
124	I live right around the corner on the Duke St service rd and would use this park all the time if the playground weren't so dilapidated and the blacktop wasn't where people that are homeless hang out. Thank you for working to fix it.

ResponseID Response

125	Parkour equipment shouldn't be next to playground. A lot of adults like to use for workouts and should not be next to children's area
126	Neither option is particularly good. I don't want parkour and I don't know anyone else who does. Just because the city has funding for a 10-year-old idea doesn't mean we should implement it now. Would like a water feature for kids instead of parkour. Also don't like the larger parking lot. No way to compare the loss of pervious surface between the options and between them and current conditions. Concerned about reducing green space.
128	make the multipurpose and basketball courts lighted
129	N/A
133	Shaded areas are important, and lots of trees, maybe trees that bear fruits, and some houses for birds
135	Please consider providing some additional bench or moveable seating along the perimeter of the open lawn concepts. The open lawn will be the quietest part of the park/one of the few parts of the park well buffered from the roadway noise. Limiting seating areas to just (12) significantly reduces passive recreational opportunities for residents in this area of the City, where there are already significant athletic field and trail active recreational facilities.
136	Has a need been expressed for this Parkour Equipment? I haven't seen this in other parks and wasn't sure if that's something community members have voiced that they want, or is just being added on in case. If the latter, I would suggest replacing it with more green space or courts/playground equipment.
137	Please consider parking for food trucks when designing the parking area. Often food trucks or ice cream trucks visit parks in the summer and it's great for families.
138	No. Happy this is being done!
139	I would like to add secluded seating areas to relax and enjoy nature. I also would like to suggest adding some concrete gaming tables like the ones found outside the Alexandria Country Day School. They have an outdoor concrete chess/backgammon table and ping pong table. An extra wide paved trail to accommodate bicycles, pedestrians and children learning how to ride a bicycle. Please use warm style lighting as has historically been used in Alexandria, not the ultra white, ultra bright LED cold lighting. More open space to play flag football, kick the soccer ball, frisbee and bocce.
140	I prefer the smallest parking lot possible, prioritizing handicap parking. I would like to see the most tree density possible as well.
141	The park should be a peaceful place for the neighborhood it borders. Parking shouldn't be such a priority. Prioritize pedestrian access and use. Trees and green space is a requirement which mean preserving existing trees. It also means ignoring the police department that usually insist on a piece of turf under a spotlight all night. The park has basically been unused, except for the basketball court, for decades. This is a chance to make a good space for the community and make up for the neglect of the past many years.
142	None
143	Option 1 is a more efficient use of the space that still leaves a big open lawn that could be used in multiple ways. The parking lot looks more convenient and creates a buffer between the playground and the busy road. I do think with all those courts, it feels a bit jumbled and busy. I don't love either option but I think option 1 is by far the best in terms of safety, organization, and preserving a natural area (the lawn) that can be used for different games or just open-ended play. My main quibble aside from the courts is that the seating area is quite far away from everything else. I think it should be more central.
145	Design 2 - biggest issue is how close playground is to the road. Prefer a greater buffer there for kids from the road.

5. How did you find out about this project? Check all that apply.



Value	Percent	Responses
City eNews	21.3% 	30
Social Media (RPCA)	5.7% 	8
Social Media (another group)	16.3% 	23
Email notification from business/community association	22.0% 	31
City of Alexandria Website	13.5% 	19
City Sign/Flyers/Letter	32.6% 	46
Other, please explain:	21.3% 	30

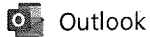
Social Media (another group)	Count
ALXNow post	1
Alexandria Now	1
BlueSky	1
Bluesky	1
Facebook Tartleton neighborhood group	1
Jonas Neihardt's funding campaigns on social media	1
Neighborhood Facebook page	1
Neighborhood community group	1
Neighborhood group	1
Wakefield Tarleton	1
Wakefiled-Tarleton Civic Assoc	1
bluesky	1
fb group page	1
https://bsky.app/profile/alxnow.bsky.social	1
x/twitter/ALXnow	1
Totals	15

Other, please explain:	Count
ALXNow.com	2
AlxNow	2
WTCA	2
ALXNow	1
ALXnow	1
ALXnow	1
Alexandria Now news	1
Alxnow	1
Alxnow com	1
Civic Association	1
Civic association presentation by judy	1
Totals	30

Other, please explain:	Count
Family member	1
Involvement through PK Move	1
Mail	1
Mail	1
Neighborhood HOA	1
Neighbors	1
Snail mail	1
Walking by, I live very close	1
Word of mouth from YIMBY friend	1
alxnow.com	1
condo newsletter	1
condominium newsletter	1
direct communication with RPCA	1
everywhere. there has been way too much outreach about this project in my opinion - just decide and build it!	1
local media	1
neighbor	1
Totals	30

6. To receive updates on future projects, please provide your information below (optional).

	Column 1	Responses
First & Last Name	61 100.0%	61
Count		
Row %		
E-mail	60 100.0%	60
Count		
Row %		
Phone Number	35 100.0%	35
Count		
Row %		
Totals		147 100.0%



Outlook

Re: Department of Recreation, Parks, and Cultural Activities - Experience Survey

From Glen [REDACTED]

Date Mon 1/27/2025 5:05 PM

To Bethany Znidersic <Bethany.Znidersic@alexandriava.gov>

Cc Judy Lo <Judy.Lo@alexandriava.gov>

2 attachments (2 MB)

Ewald Park Design -- Option 3.jpg; Ewald Park Design - Option 3.png;

Hi Folks,

Sending this plan out at the last hour as I've been working on this over several days, see attached. I have taken measurements of all the areas of the reconstruction, and they are reasonably accurate. No real software, no real time, but I have also printed a B/W landscape to bring w/ me for Judy. I will give you the written notes of the 'reasons' for these changes I have written on the community flyer. Sorry didn't get that item up in time, and I'm not at home, atm

The 'Option 2' is still not in compliance w/ VDOT, and very unsafe the location of the parking lot. To me, this is the only viable option for this park, that allows the main areas of improvements to be addressed, and, ease of maint, safety, with access for maint and emer vehicles. The attached re-work shows that the Driveway Skirts can be re-used, but w/ only the current number of spaces, not additional ones. Unless, the entryways are 'curved outwards' or other spaces are put into the perimeter exterior or a 'third tier' of spaces, in some fashion, or if the onsite measurements show it can be done without the use of 'side islands' as I've included.

I do not know if the existing #1 driveway skirt can be moved the 15--25' westward I estimate will possibly have to be done for more spaces. Meaning even though the current and my proposed ingress/egress is directly to a bus lane. Which is by far the safest way to enter, especially large emerg equip, trash trucks etc.that cannot turn from only 'one lane' into an entrance and typically need another half lane at least. Thanks to all,

K.Bell

On Tuesday, December 17, 2024 at 09:37:59 AM EST, Bethany Znidersic <bethany.znidersic@alexandriava.gov> wrote:

Good morning Kevin,

Thank you for attending the Ewald Open House Meeting last night and for your thoughts and feedback on the park designs. I appreciate all the time and thought that you've put into this park project. I'm glad you were able to access last week's meeting recording and the information about street entrances. We will investigate that further with our partners in Transportation and Environmental Services. I appreciate you highlighting it for us.

The project's next virtual community meeting is January 30. To avoid repeating the access issues with Zoom, I suggest a few steps. Please register for the meeting in advance and plan to sign on a little early that evening. I and Judy will be online prior to the start of the meeting and if you encounter any issues accessing the Zoom meeting, please email us so we can help you at that time. It may also be helpful to update the version of Zoom on your phone or computer, whichever you will be using, in advance of the meeting.

Thank you again for helping improve Ewald Park.

Beth Znidersic

Bethany Znidersic

Division Chief

City of Alexandria, Virginia

Department of Recreation, Parks and Cultural Activities/Park Services

703.746.5492 (office)

alexandriava.gov

From: Glen [REDACTED]
Sent: Tuesday, December 17, 2024 2:51 AM
To: Bethany Znidersic <Bethany.Znidersic@alexandriava.gov>
Subject: Re: Department of Recreation, Parks, and Cultural Activities - Experience Survey

[REDACTED]

P.S. I wanted to run by you a few items just noticed after listening to Ms. Lo's presentation just now. The option 2 plan is actually 'far' superior to 1 'if'... The #9 Courts were moved to the area 14, with No- further intrusions into the open field area, incl any pavilion. Mentioned to architect about errant balls flying into ones lunch, being too close to home run hitters (as in Opt1)... Possibly then add the small fuzball locate btwn Parking#1 and Court#6. And her assurances that this new lot 1, and that part of field already drains towards north, not into field, she is correct. And her ideas of play areas incorporating hillside is right on, and preferred, as fencing and soft landings at bottom area are incorporated.

The pathway system could still be incorporated around Courts#9 / Pavilion#8 after relocated there. With No path/trail on perimeter of open field as in design which is def preferred! Those being hard to constantly maintain causing often slippery, dirty icy, gen poor conditions, esp in that area of southern end of field drainage area... And, Art structures (as mentioned they bcome play equip) in area #12. I realized the potential of Option2 bcz best keeping usage w/in reasonable limits - Parking holds ~20, so any xtra BB Court And, 2 Multi's Will Add users. My image is to imagine "All" the proposed Courts, Fields, Pavilions, Playground and other areas "Filled to Capacity" on any given day...it Will Happen. The then conflicting user desires, and maint becomes exponential, especially if, 'super' vs. simple playground equip is installed.

I initially said, 'whichever option keeps the field in-tact and large as possible', however, moving #9 solves both, the keeping over-usage at greater - than-current but w/in reason, and field is preserved. Also plz Note: It is illegal now according to VDOT regs to install any Driveway directly into a street having a Speed Limit of 35 or more. Which I think this is. I noticed that current and proposed entrance/exits are from / to what is now, a Bus deceleration lane. Without this, users w/ kids in car leaving parking lot won't come back if when exiting they have to face speeding traffic... As does the next 2 neighboring residences driveways.. Take Care :)

On Monday, December 16, 2024 at 09:05:22 PM PST, Glen [REDACTED] wrote:

Wanted to send my kudos to you for sending this and making the connection between this address and yourself at this evenings outreach. Thanks to Ms. Lo for letting me know that she had actually done a Presentation at one of the recent WTCA meetings at the City Police Station, so they got all the 411 a good while back. Yes, I am chatty, yes I mean what I say, esp about serious things. I was commended by the Fire Chief for 'removing' all the babies from the playground equipment when the gigantic yellow jacket nest directly underneath it inside the fibar-mulch were in full attack mode! All, the mommies and nannies with their faces in phones and werent concerned at all about the possible deadly consequences of multiple venomous stings on their 1-2 yr olds, and were all, ignoring the loud crying n screaming! Yet, I was "excused" of "touching" little children w/o parental permission... The Rangers arrived to help me, finally, and yes, many more stories, and I have saved some lives.

Please let me know the path to take to make sure I can log-on to next Zoom, or who to contact, thanks again. Sending pic I had forgotten, hope u smile, just another day in Park Maint Section! I still had my backpack on, which means I had just arrived for that parks leaf-removal operation in progress, earplugs in... First assignment - Hey Kevin "move this guy or Im gonna bury him! He couldn't walk, went limp- pee'd in his pants- thinking he was being hauled by police to go into a cruiser... Put him on the bench, w/ his gear, all his co-drinkers vanished, found out I coulda gottn in trouble for doin that too... so plz be selective on who this is shared with...

Also, if you see Scott Graham, City Arborist Division, I have his email, just never got round to it, but I will. I understand John head city Arborist is retired I think, Mr. Pugh from Code Enforcement and I also had met up decades ago working for different Sections - and yes Dinesh was running things so several of us opted out of joining your outfit around the time he got onboard, I understand from Scott one of the first things he did was lay off all Parks staff of less than 10y employ... with the resulting huge drop in, and complaints of, maintenance... It was nice speaking to you and all present. All the Best to You n Yours

K.Bell

On Friday, December 13, 2024 at 11:48:28 AM PST, Glen [REDACTED] wrote:

Good day to you ma'am, and many many thanks. Please excuse the kurt and emotional emails to you both. Yes, Ms.Lo sent the flyers 2wks ago and sent another this week. And thanks especially for the link. Im disappointed no members of the WTCA I could recognize showed up to your very nice field day at Ewald as I had expected. I have only limited contact info for the assoc as now they've went all-digital I believe, but I'll try, it may not even be an issue for this association.

Spoke to the gentleman I thought was Div Chief, Ms. Lo and many others that day. Yes, I will do my best to attend your outreach meetings,

which glad is still in use. I was not expecting to hear from Div. Chief as I'm sure your plate is quite full and Holidays etc... My overriding issue is the proposed re-make of the field at Ewald, my back yard. Been at 25 Underwood for 25y now, have seen all the changes there. I know the history of this park, and yes, when I moved in there were young men w/ guns jumping my fence from the b.b. court on many a weekend... This park, All Cameron, my subdivision, most of the entire West End was owned by the Owen family, who's family home is still adjacent to this field, the oldest one on West End I believe. Of whom I met in 99' the 'original' owner of all this land, Tom Owens grandmother. She was 99y old that Dec day, living on the lot next door.

I would not have had opportunity to email you if not for your contact here as city website has only one other individual listed for Parks and my email was returned. I wish to advocate for this field to remain untouched, for many reasons. High among those is its one of the last fields in West End that the migratory geese (have seen cranes / swans but not after recent installs) actually land 2x every year. Any re-do's, incl turfseed/ aerations/ topdressings (sports maint) and removal of native grasses and weeds that the wild / migratory birds consume will remove them as well. No one at the field-day seemed to know this field is used several x weekly by various users, as is. Please, leave it untouched, anything done will be a huge \$ investment spanning unknown years and not needed. Drainage from surrounding properties onto this field, and this field drainage is, and has been excellent, even through the worst deluge's. Artificial turf will create, as does everywhere, a large 'hotzone' that cannot be avoided. Im not an 'activist' just a neighbor who happens to have extensive Parks, Construction, Greens Industry background.

Thanks again for this contact and my reply to you.

K.Bell

On Thursday, December 12, 2024 at 01:05:50 PM PST, Bethany Znidersic <bethany.znidersic@alexandriava.gov> wrote:

Good afternoon Mr. Bell,

First, thank you for submitting a survey about your recent experience. I apologize for the situation and if I may, I'd like to understand more about what happened. From your feedback, I understand that you tried to attend one of our virtual community meetings, but were unable to join the meeting because you needed to provide a code or ID that you did not receive. I am sorry that you were not able to attend, and we will work to improve our communication, as well as see if there are other ways that we can improve access to virtual meetings.

If you tried to attend last evening's virtual meeting for John Ewald Park, the recording will be posted on the project webpage at: <https://www.alexandriava.gov/parks/project/john-ewald-park-improvements>

We also have another option to connect with you on Monday, December 16 if your schedule permits. We are having an open house about John Ewald Park at Patrick Henry Recreation Center from 7-9pm. If the Open House options does not work for you, I am happy to schedule a call to discuss the project.

Again, I apologize for your experience and hope to see you Monday or hear back regarding your thoughts on the park project.

Bethany Znidersic


Division Chief

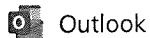
City of Alexandria, Virginia

Department of Recreation, Parks and Cultural Activities/Park Services

703.746.5492 (office)

[alexandriava.gov](https://www.alexandriava.gov)


The City of Alexandria's 275th Anniversary



Outlook

[EXTERNAL]Ewald Design Option 3

From Glen [REDACTED]
Date Wed 1/29/2025 3:28 PM
To [REDACTED]
Cc Judy Lo <Judy.Lo@alexandriava.gov>

5 attachments (7 MB)

Ewald Park~ Redesign.rtf; Neighborhood Plan Ewald.pdf; Ewald Park Design ~ Option 3.jpg; IMG_20250127_241243366.jpg; Screenshot_25-1-2025_20594_.jpg;

Nice seeing you Erin and Judy,

The prints I gave to you I've discovered that yes, the entrance to new parking isn't workable do to the fairly large rise in the short space of 20+'. Even if moved eastward, the lot needs a longer 'ramp' if accessed from the existing entry skirt, as brought out during meeting by the architect. As you pointed out, if,, City does lower speed limit to 30, then a new entry / exit skirt can be connected, but even then, the need for a turn / acceleration-deceleration lane is required for the very large equip entrance, ie, trash, tree, bucket, fire and maint trucks.

The revised lot does address this and, my math says it will work with 'wiggle room' (compare to multi-level garage ramps inclines). But I feel this is the least expensive, (cost vs. long term bene's) workable (not attracting out of neighborhood) and is a valid option. This option is I feel the only one that is do-able, not hugely complicated, safer, and the others submitted I withdraw. The written explanations are My Own concerns, in order of my priorities (in bold) for this Renovation, w/o necessarily including all the feedback of the various surveys.

I've designed a lot of landscapes, and know the 'dirty underside' of park maintenance, new installs or preserved in time, and yes, this one is a challenge. My many hours of brain drain and loss of sleep I hope pays off here. Thanks again for your time and the 'chillin out' in the parking lot of ACP. I don't check this email even close to daily, I am requesting that any distribution of these attached to others' not be associated w/ this email address, Underwood address is ok. All the best,

K.Bell

DISCLAIMER: This message was sent from outside the City of Alexandria email system.
DO NOT CLICK any links or download attachments unless the contents are from a trusted source.

Shape the Future of Ewald Park

Scan Here
for the survey



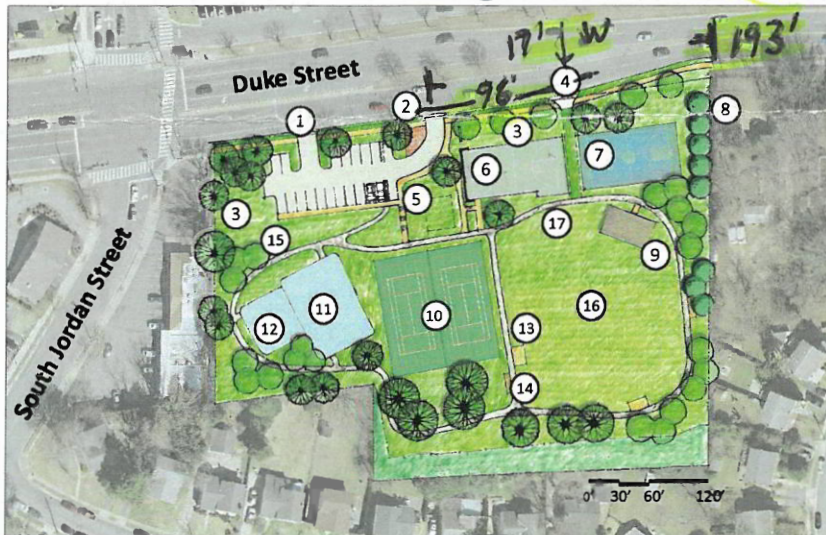
The City of Alexandria invites your feedback on the redesign of John Ewald Park.
Take the park design survey and select your preferred design option.
alexandriava.gov/parks/ewald-project

* OPTION 3

{SEE ATTACHED - SIMPLE-
FUNCTIONAL - LESS COSTS}

1. Proposed One-Way Vehicular Entrance
2. Park Entrance Plaza
3. Stormwater Management Systems
4. Park Maintenance Entrance
5. Restroom
6. Existing Basketball Court to Remain
7. Proposed Second Basketball Court
8. Vegetation Buffer
9. Picnic Pavilion
10. Two Multipurpose Courts
11. Relocated Playground
12. Parkour Fitness Area
13. Fitness Exercise Area
14. Seating
15. Slope Lawn
16. Open Lawn
17. Pathway System

Ewald Park Design - Option 1



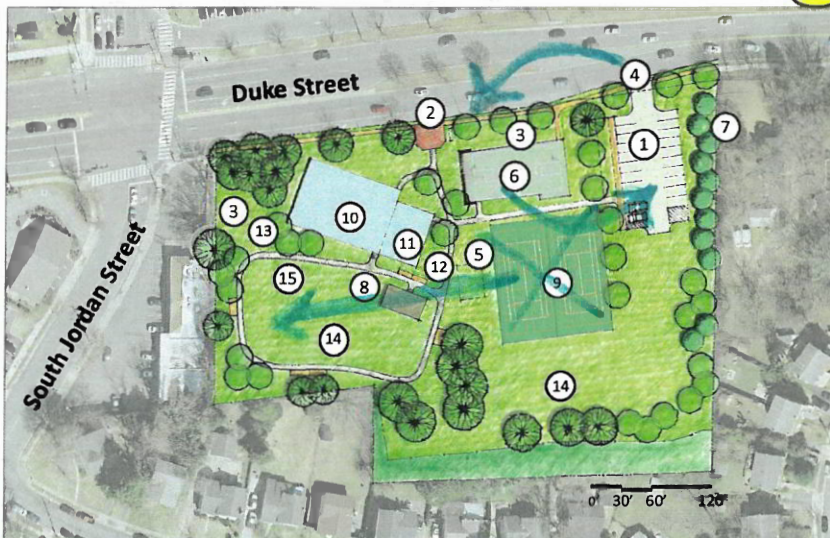
Park Design - Option 1

* FIELD LEFT OPEN AS IS - FOR P/V SPORTS *

* EXISTING PKG + B.B. CT ASPHALT/REPURPOSED TO BASE/MIX FOR NEW PAVINGS
+ OTHER FOUNDATIONS MIX CONCRETE

* LIGHTS CAN BE LEFT IN PLACE * ! USE EXISTING APRONS! (SAFE EXITS)

Ewald Park Design - Option 2



Park Design - Option 2

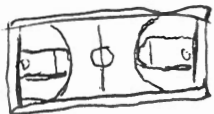
* EMERG./MAINT ACCESS TO FIELD

* PAVILLION STEPS? * FIELD DRAINAGE IN-TACT! *

6

B.B. CT. =

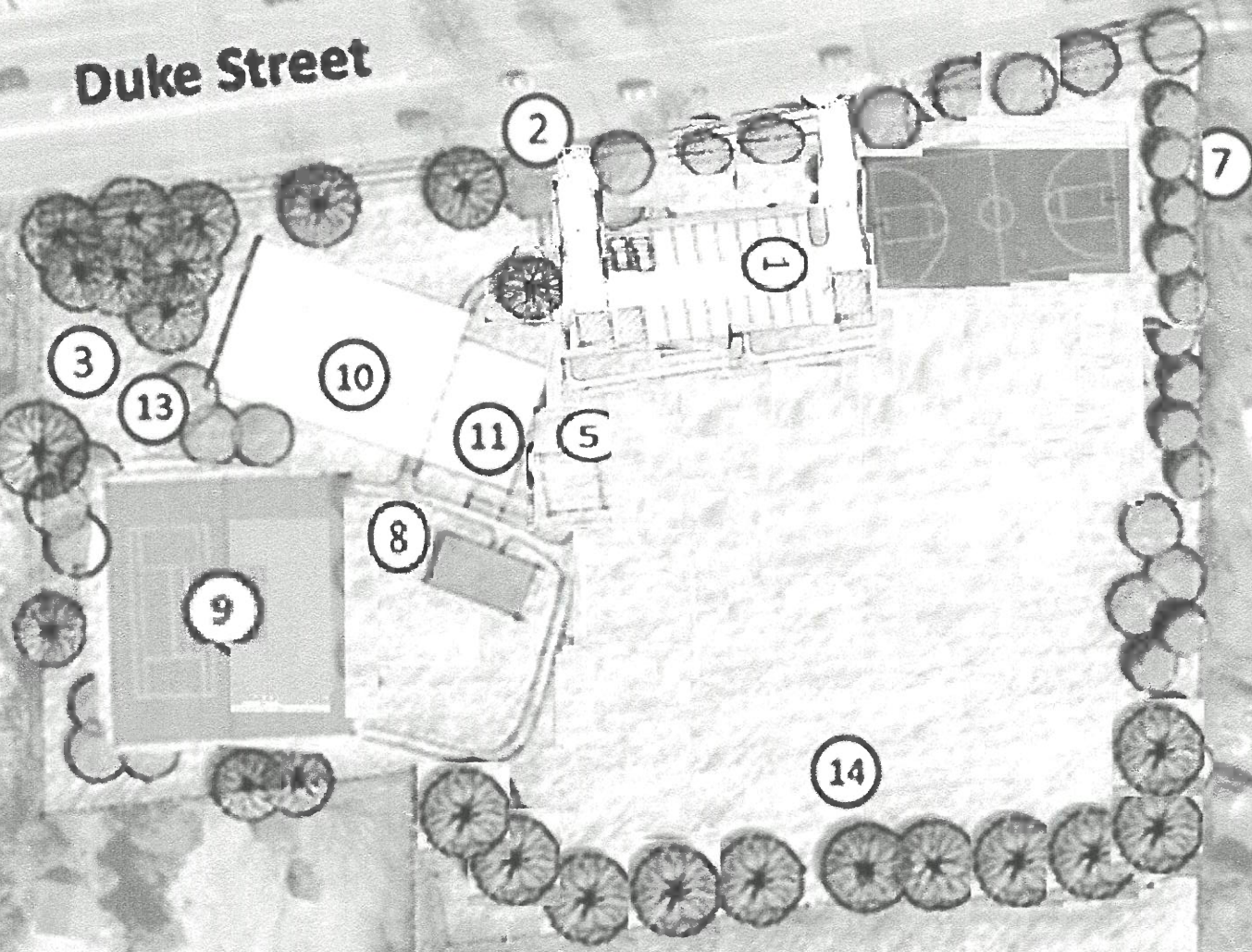
108' x 50'



* B.B.
+
* PLAYGROUND
CLOSER TO
PARKING LOT
SAFER FOR
EMERGENCIES
* TENNIS/+
MULTI-USE -
FUSAL
PICKLEBALL

Duke Street

South Jordan Street



0' 30' 60' 120'

PhotoPad Trial Version © NCH Software

Duke Street

South Jordan Street



0' 30' 60' 120'

PhotoPad Trial Version © NCH Software

Ewald Park Redesign

kbell-01/28/25

Development Issues

Field Kept Open, As-Is, for all p/u sport / Kept large enough for little league play / Gathering area for **migratory birds!**

Field **Drainage** left Intact. (concrete drainage box behind south fence may not have capacity for increase flow caused by any further development- Esp Irrigation, Hard Pavings, incl Synturf or Trail-walkways)

Lowers possibility of flooding of Underwood or S. Iris properties. Place all perimeter **lighting on Timers**, w/ Solar Power?

Can be Overseeded One Time with; Native grasses and weeds to keep natural and lower dust / No added maintenance or Lights!. Clover, Chickweed, Bluegrass, Ryegrass, Wiregrass, Crabgrass, Chewings and Red Fescues etc.

Relocation of Lot and B.B.Ct is Paid largely by No further development of Field (exc perimeter trees) B.B.Ct can face N/S in line w/ Tennis Assc recommends and saves space for longer Lot. No community cost/benefit for two B.B.Ct.

Use of Existing Driveway Skirts utilizing Full Bus lane for access to Duke east. (Must have 1.5 traffic lane widths for turning large maint vehicles, emer vehicles and sight distance for exiting park users)

No Ingress/Egress vehicular can be made safe w/o "At Least" one full turn/merge lane w/ adequate acceleration and sight distances.

Design shows **full 56' curved entrance "ramped" on left side** to accomodate 2' elevation rise. Two parking spaces on right side entry near playground for handicap. Right side of entrance can be raised slightly, and existing B.B.Ct can be lowered slightly to accomodate up ramp to lot. Estimates of spaces can be accomodated with room to spare. Addition of 2 spaces overall but can be lessened or increased if desired.

Existing prkg + B.B. Ct Asphalt / Concrete should be Ground/Pulverized, Repurposed for Base / Mix for new paving and Other Foundations mix. Lights largely left in place

Playground utilizing hillside w/ modern engineering, w/possible re-use of some existing equip. Closer to new parking lot Safer for Emergencies, maint vehicles etc.

Built-in seating / ADA sidewalk / multi-terrace can be incorporated into slope between

old pool area (new pavillion) and Field, depending on budget

Memorial Trees can be relocated and replanted, in non play/pedestrian areas, or Memorial Bench. Virginia Junipers at top of hill are at their typical life-span end stages. These natives can be replanted and grow quickly, do not provide shade, best for wind breaks, privacy, wildlife habitat etc.

Any New Rest Rooms must meet current codes and, WILL generate more Trash, Vandalism, Homeless activities, Loitering etc, Drain backups. Increased Maint Costs incl Winter Shut Downs (if not heated) - AC units - water - Contract cleaning etc. However, modern construction styles etc can midigate some problems. RR is needed if, anticipated increased use is realized.

Any Water Feature, incl Art Only, will require both inspections, permitting, ongoing electrical, plumbing, filtering, cleaning w/ chemicals, winter shut downs etc.

If, used for human contact then Will Require pool permitting, pool regulations incl filtering, Underground utility access, drainage, sanitation for human and dog urine, feces, food items, trash, etc.etc. Monitoring, Liability Insurance, (similar size =Drew and Penrose Parks-Arlington for cost breakdowns/ incl insurance - maint - issues etc/yr)

Existing Conditions:

Parking lot = Combo- Ent / Exit - 59.3' x 73' (14+1 Handicap@9'spaces) - Entrance = 22.6'w x 55.5' total length (bend lengths = 54.5' inside x 79.5' outside)

Maintenance entrance = 17'w / ~ 27' curvature to left of B.B. Ct. from Center

Walkways = 96' between Parking lot entrance and Maintenance Entrance- Center to Center

193' from Maint Ent to End of property (~2+' elevation) / Utility Box ~ 25' left of ent next to sidewalk (Underground lines)

B.B. Court = 108 x 50' outside widths - Aprx 2-3" elevated from street

Parking turn around = yes

ped ent = yes

2nd b.ball ct =no

renovate turf / irrigation / =no

Walking path around South Field =no

Return 1 old tennis / 1 multi- court

Install shade tent / large art-sculpture (Will become play equip)= no

Community Bldg = no



Outlook

[EXTERNAL]Park Design - Parkour Visions Resources

From Chris Wachtman [REDACTED]
Date Thu 1/30/2025 4:48 PM
To Judy Lo <Judy.Lo@alexandriava.gov>

You don't often get email from cwachtman@gmail.com. [Learn why this is important](#)

Hi Judy,

It was nice to meet you at the Park Design Community Open House in December. I had planned to attend tonight's Park Design Community Meeting, but unfortunately I cannot make it. I've marked my calendar for the Open House in February, but rather than waiting until then, I thought I should share this resource with you regarding parkour park design:

<https://parkourvisions.org/design>

Parkour Visions is a Seattle based non-profit established in 2007 and the leading parkour design consulting firm in North America. I think they have a lot to offer whether you choose to consult/contract with them or just take inspiration from their portfolio and The Parkour Park Design Handbook:

<https://parkourvisions.org/news/parkour-park-design-handbook>

-vr
Chris Wachtman

**DISCLAIMER: This message was sent from outside the City of Alexandria email system.
DO NOT CLICK any links or download attachments unless the contents are from a trusted source.**

Voice Mail Transcript
Received 2/12/25

Hi, Judy, this is Ken Krupa. I looked at the Ewald Park options and I think I prefer number one. I tried to access the E-mail and the QR code but I didn't have any success so that's the reason why I'm phoning. The other thing is I'm also a member of the Alexandria Beautification Commission and we notice that there's quite a bit of vegetation and trees in the park already. It seems to be a very popular place, especially for basketball. But anyway, we were hoping that you guys could do an inventory in terms of the trees that are there already. And if there are any that are non-native species that could be invasive, uh, we hope that maybe you could remove them and uh put some new trees that in fact our native species. So again, my name is Ken Krupa. I can be reached at XXXXXXXX. Really pleased about the redesign of Ewald Park and hope it's going to be win win for everybody. Thank you. Bye.

Written Comments Received at In-person community meetings
December 16, 2024 and February 10, 2025

What is your preferred design option and WHY? What could be improved?

- Potential covered b-ball court
- Does option 2 have capacity for a 2nd basketball court?
- #2 I like that the parking is further from Jordan and the playground is visible. I wish it had more pathways to walk on.
- #1 Feels like better use of space and even fits an extra court. Placing the restroom near the parking lot seems good too. And I like the longer walking path.
- #1 No further intrusion of the field (diminishing -migratory birds) & cost savings- No Irrigation – No sports turf
 - No restrooms unless absolutely necessary
 - No more lights – replace all lights with downcast only
 - Do not encourage additional users with sports/picnic/amenities. Keep existing use and approx.. max users at reasonable numbers
- I like option 1 more because of the parking lot and 2 basketball courts
- I like option 1 more because of the parking lot and 2 basketball courts (add shade canopy over ballcourts)