



City of Alexandria

Del Ray Gateway/ Colasanto Interactive Fountain

Warwick Village Citizens Association Meeting

March 17, 2025



Agenda



1. Project Goals and Overview
2. Public Art
3. Construction Schedule
4. Construction Coordination and Area
5. Contact Information



Project Goals and Overview

- **The Del Ray Gateway/Colasanto Project will replace the existing closed pool with a new interactive fountain and plaza space with public art.**
- **The project will deliver a space that:**
 - Is an at-grade aquatic facility
 - Is multi-generational and serves multiple user groups
 - Incorporates public art
 - Functions as a plaza and much more
 - Functions as a gateway to Del Ray

Project Location



Project Plan



Legend

- 1 Interactive Fountain feature
- 2 Proposed Public Art location
- 3 Table and Chairs
- 4 Bench
- 5 Recycle And Trash Bin
- 6 Drinking Fountain and Foot Wash Station
- 7 Underground Vault for Mechanical equipment
- 8 Underground vault as Balance Tank
- 9 Potential Stormwater Planter
- 10 Fence
- 11 Potential Restroom
- 12 Permeable Paving

Project Views



Legend

- 1 Fountain
- 2 Public Art
- 3 Table and Chairs
- 4 Bench
- 5 Fence

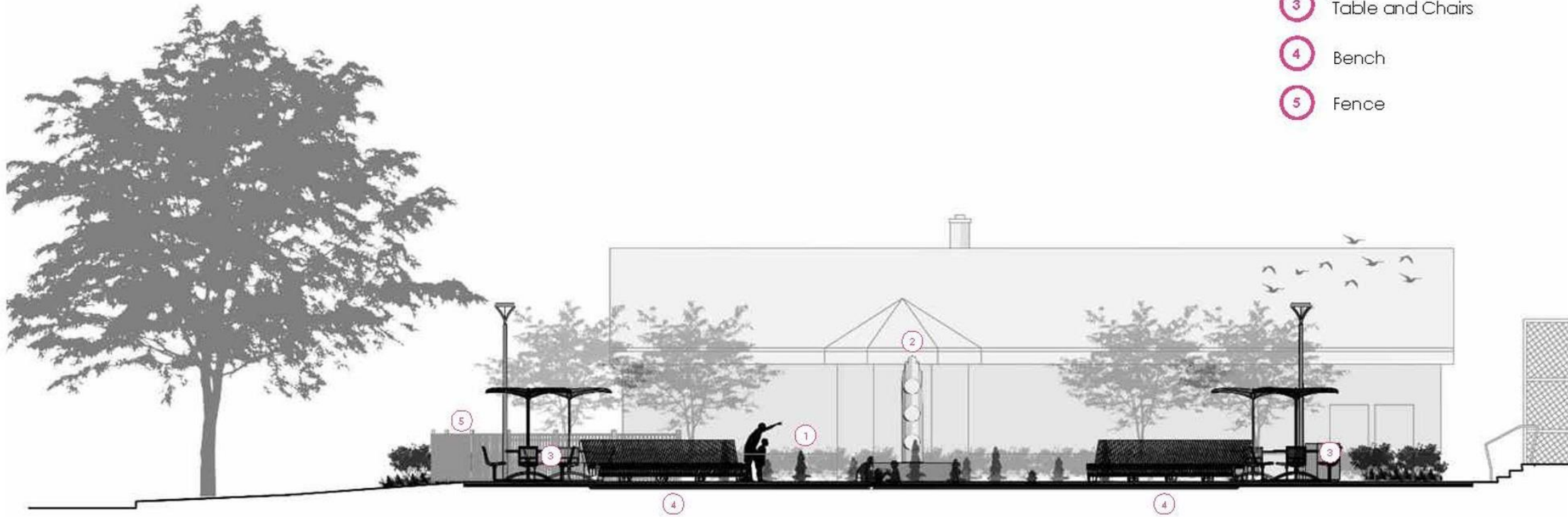


Project Views



Legend

- 1 Fountain
- 2 Public Art
- 3 Table and Chairs
- 4 Bench
- 5 Fence



Perspective Rendering



Public Art at Del Ray Gateway/ Colasanto Interactive Fountain



- Beatrice Coron was selected from a national call to design and fabricate an original artwork to be integrated with the project.
- Beatrice collected community stories from residents about Del Ray and visited the area to provide inspiration for her design.
- The public art concept was presented to the Public Art Task Force in November 2021 and approved by the Arts Commission in November 2021.
- Additional information is on the City's website at: <https://www.alexandriava.gov/publicart>



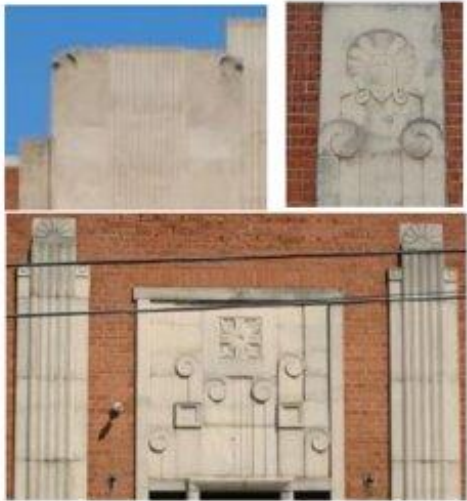


3 steles 10 x 2.5'

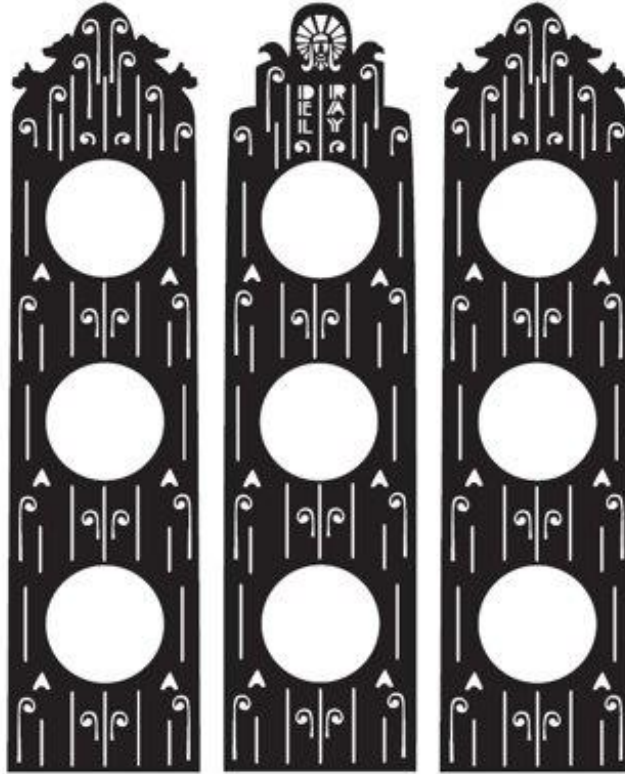
2 for entrance from parking lot
top of steles with dogs silhouettes

one on the opposite site near artisan center
top of steles with eagle silhouette and Del Ray inscription

Art Deco Design referencing water spray,
neighborhood life and architecture of:
Washington School
Monroe Avenue Swing Building
1509 Leslie Avenue Building

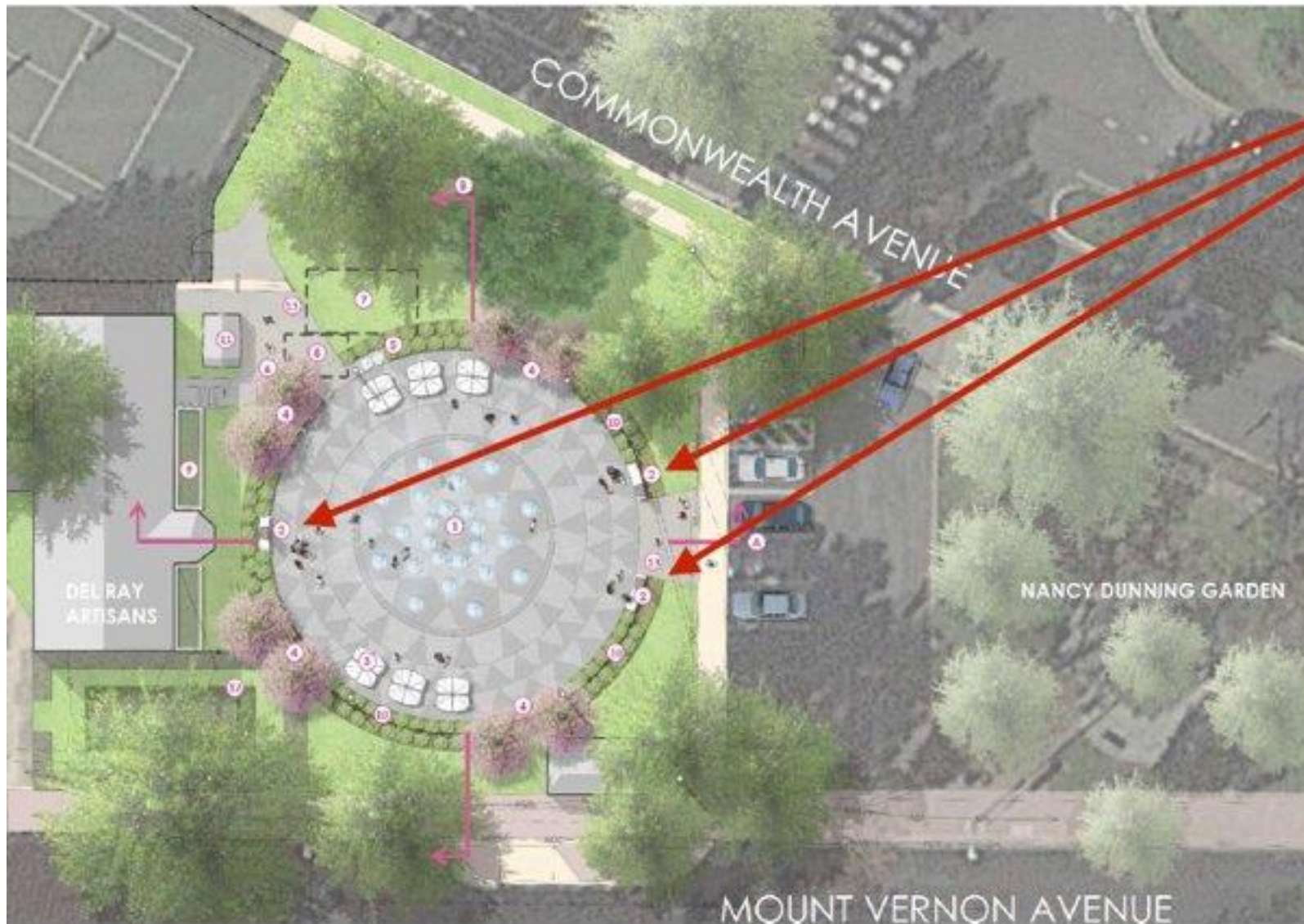


Steles design



Public Art

Public Art Locations



Legend

- 1 Interactive Fountain feature
- 2 Proposed Public Art location
- 3 Table and Chairs
- 4 Bench
- 5 Recycle And Trash Bin
- 6 Drinking Fountain and Foot Wash Station
- 7 Underground Vault for Mechanical equipment
- 8 Underground vault as Balance Tank
- 9 Potential Stormwater Planter
- 10 Fence
- 11 Potential Restroom
- 12 Artisans Garden
- 13 Permeable Paving



Construction Schedule

- Contract Award
- Construction Preparation (Ongoing)
- Contractor Mobilization and Construction Activities
- Substantial Completion and Construction Close Out

Del Ray Gateway/Colasanto Interactive Fountain Construction Timeline





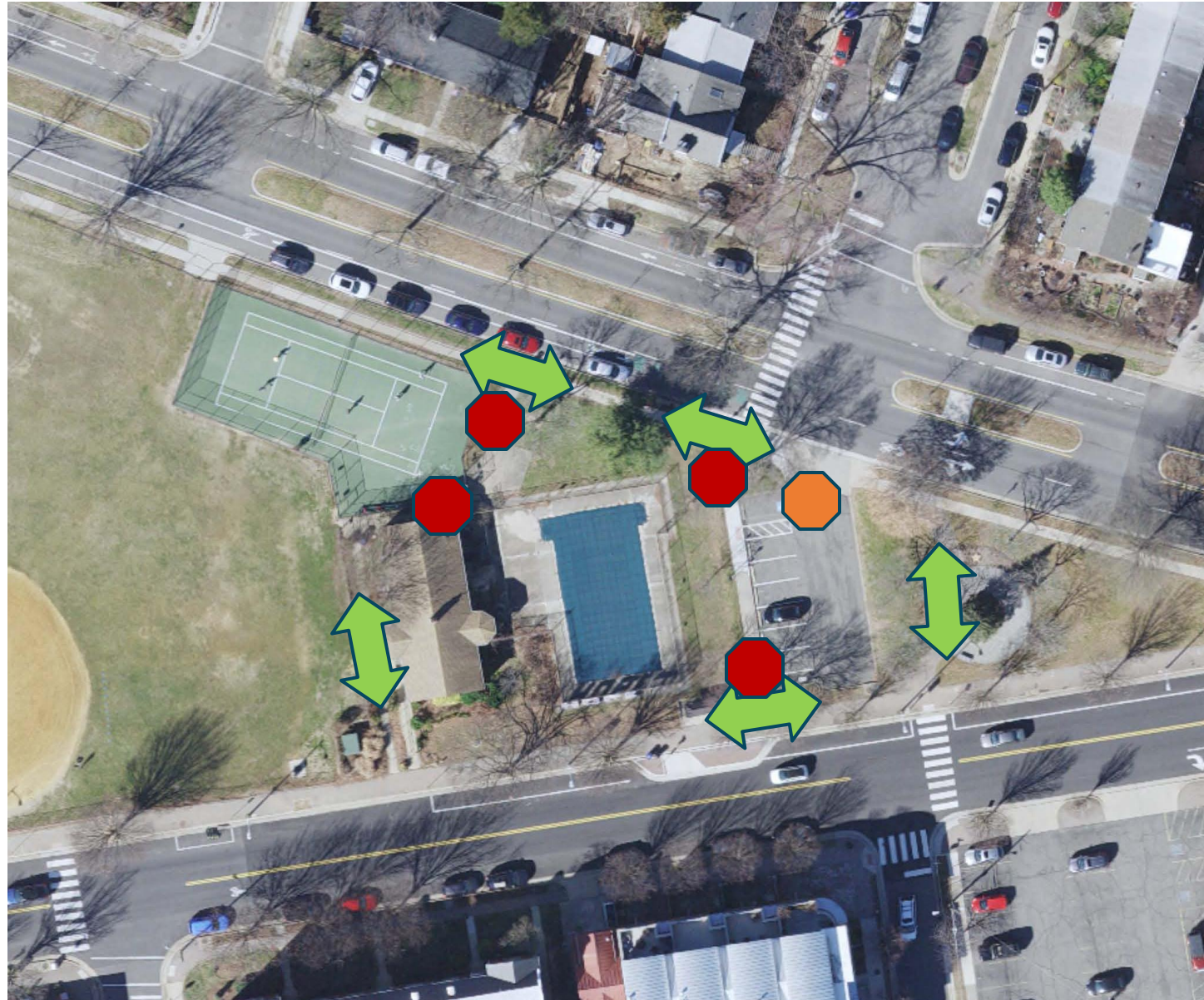
Construction Coordination

- Construction fence will be installed around the project limits
- Parking lot restrictions and pedestrian detours are necessary to maintain safety during construction
- Construction equipment and materials will be located within the project area
- Construction noise is anticipated during construction hours
 - ▶ 7 a.m. to 6 p.m. Monday-Friday
 - ▶ 9 a.m. to 6 p.m. on Saturday

Construction Area



-  Pedestrian Path
-  Pedestrian Detour
-  Vehicle Access Restriction





Connect with Us!

1. Visit the Project Webpage:

- ▶ alexandriava.gov/rpca/project/del-ray-gateway

2. Reach Out With Questions:

- ▶ Bethany Znidersic, Division Chief

Department of Recreation, Parks and Cultural Activities

bethany.Znidersic@alexandriava.gov

703.746.5492

