

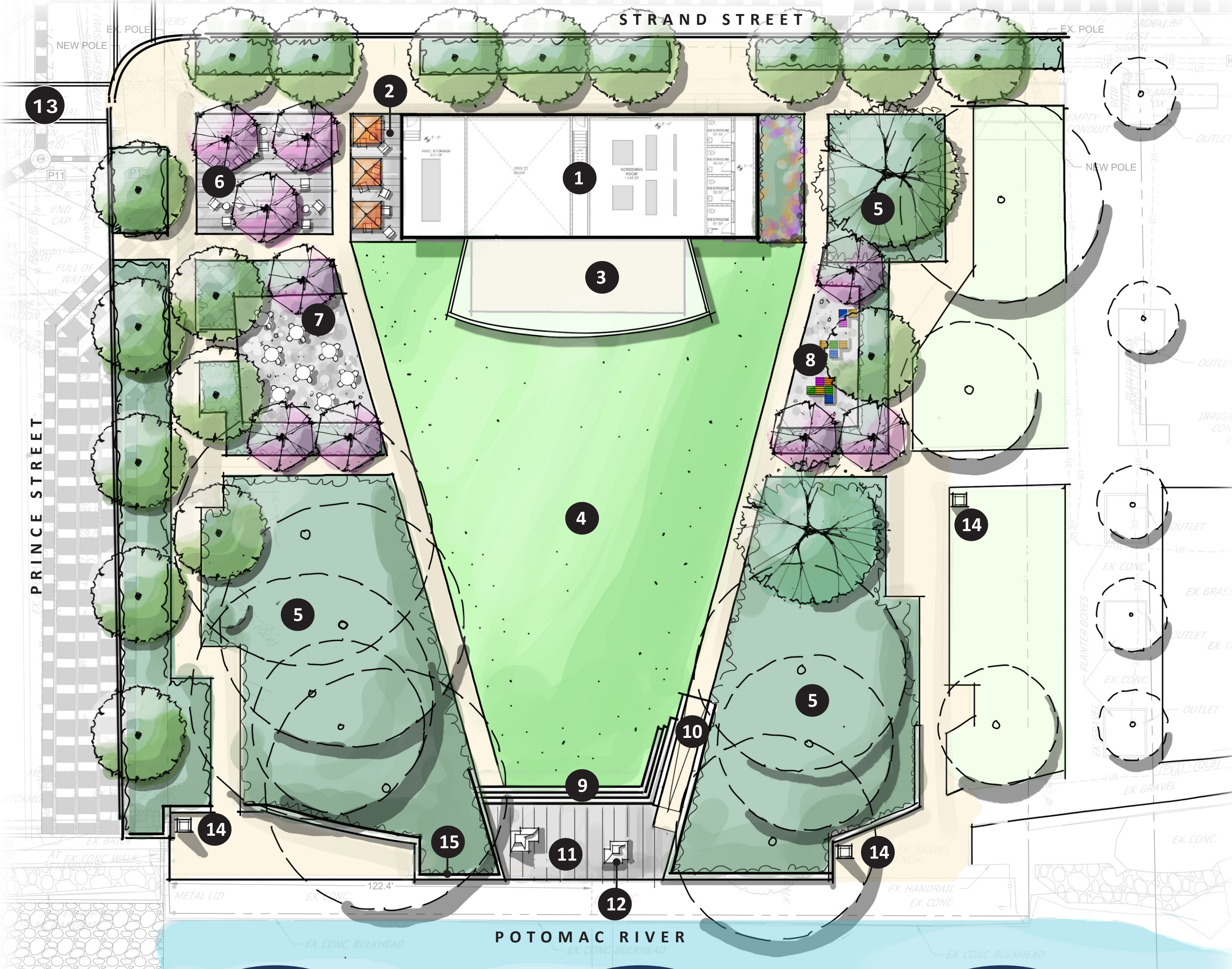


City of Alexandria

Waterfront Flood Mitigation Implementation

Draft, Deliberative, Pre-Decisional

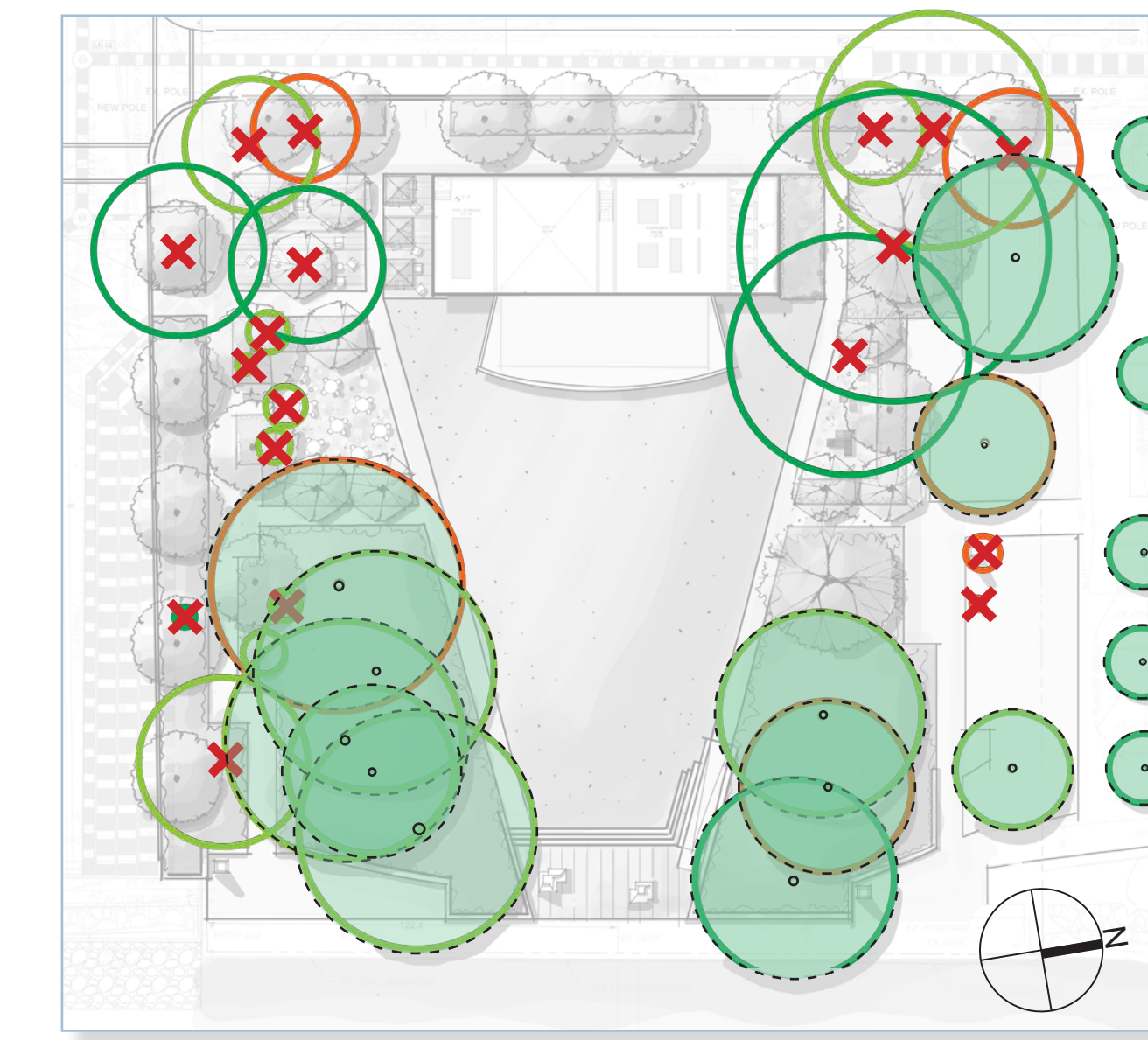
Waterfront Park Option 1A



Legend:

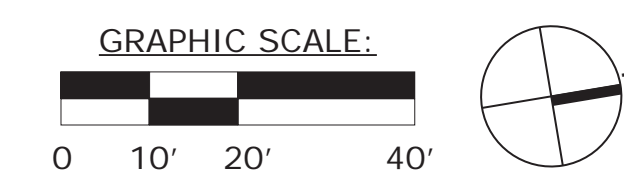
- 1 Pump station (103'-4" x 36'-6")
- 2 Plaza with movable tables and chairs
- 3 Covered performance plaza
- 4 Sloped multi-use lawn (12,610 SF)
- 5 Preserved existing trees and proposed landscape
- 6 Entry plaza with signage, wayfinding, and movable seating
- 7 Game tables and chairs, fixed or movable
- 8 Sculptural seating and kids play zone
- 9 Grand stairs
- 10 Ramp
- 11 Waterfront plaza / pop up stage location
- 12 Art elements - photo opportunity
- 13 Enhanced crosswalks
- 14 African American Heritage Trail sign location
- 15 Flood wall (conceptual)

Tree Preservation and Removal: Option 1A



- Existing tree in good condition
- Existing tree in fair condition
- Existing tree in poor condition
- Existing tree to be removed
- Existing tree to be preserved

Tree preservation and removal is conceptual only and subject to change as the design progresses.



3



4



6



7



8



12

Public Open House
November 2024

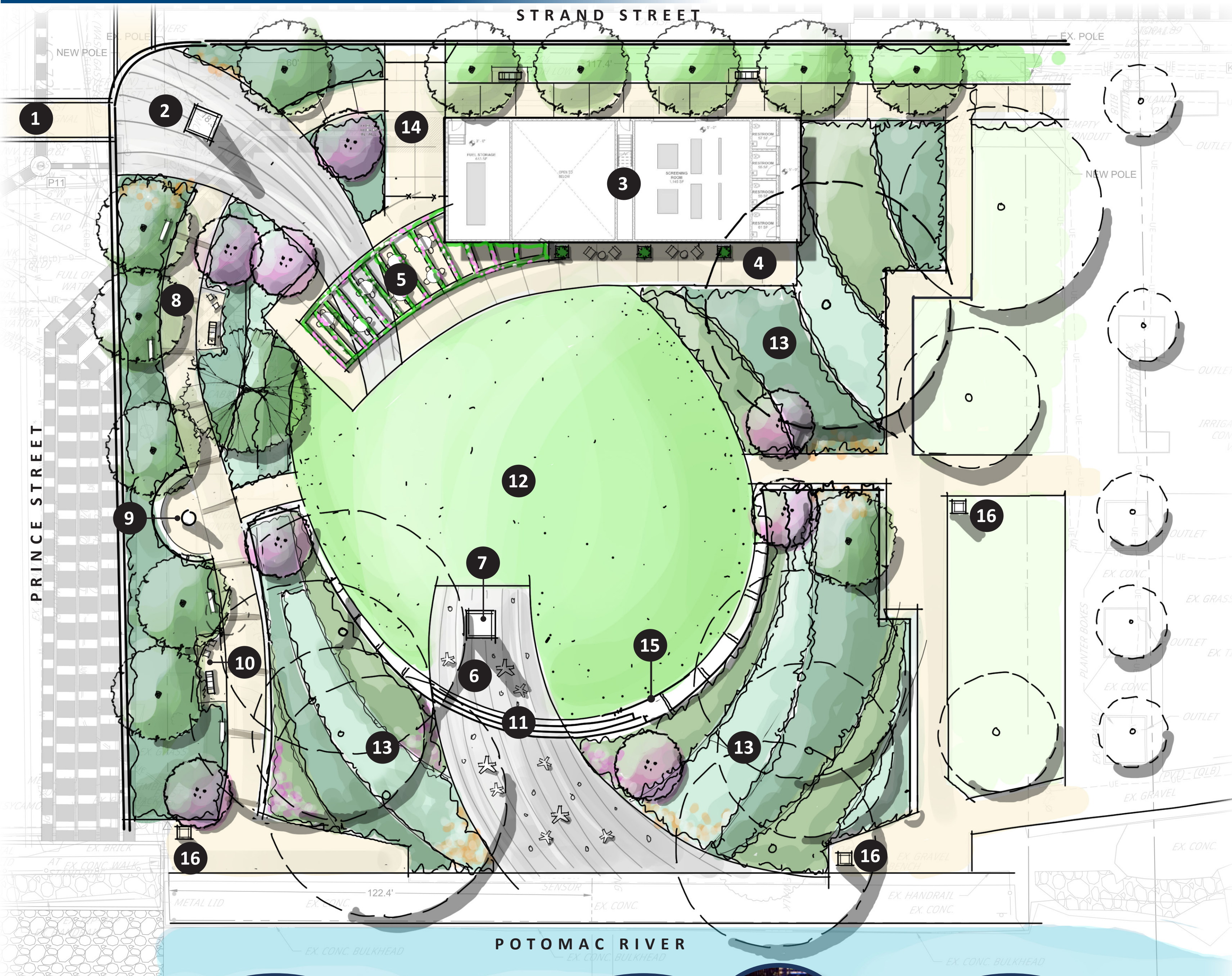


City of Alexandria

Waterfront Flood Mitigation Implementation

Draft, Deliberative, Pre-Decisional

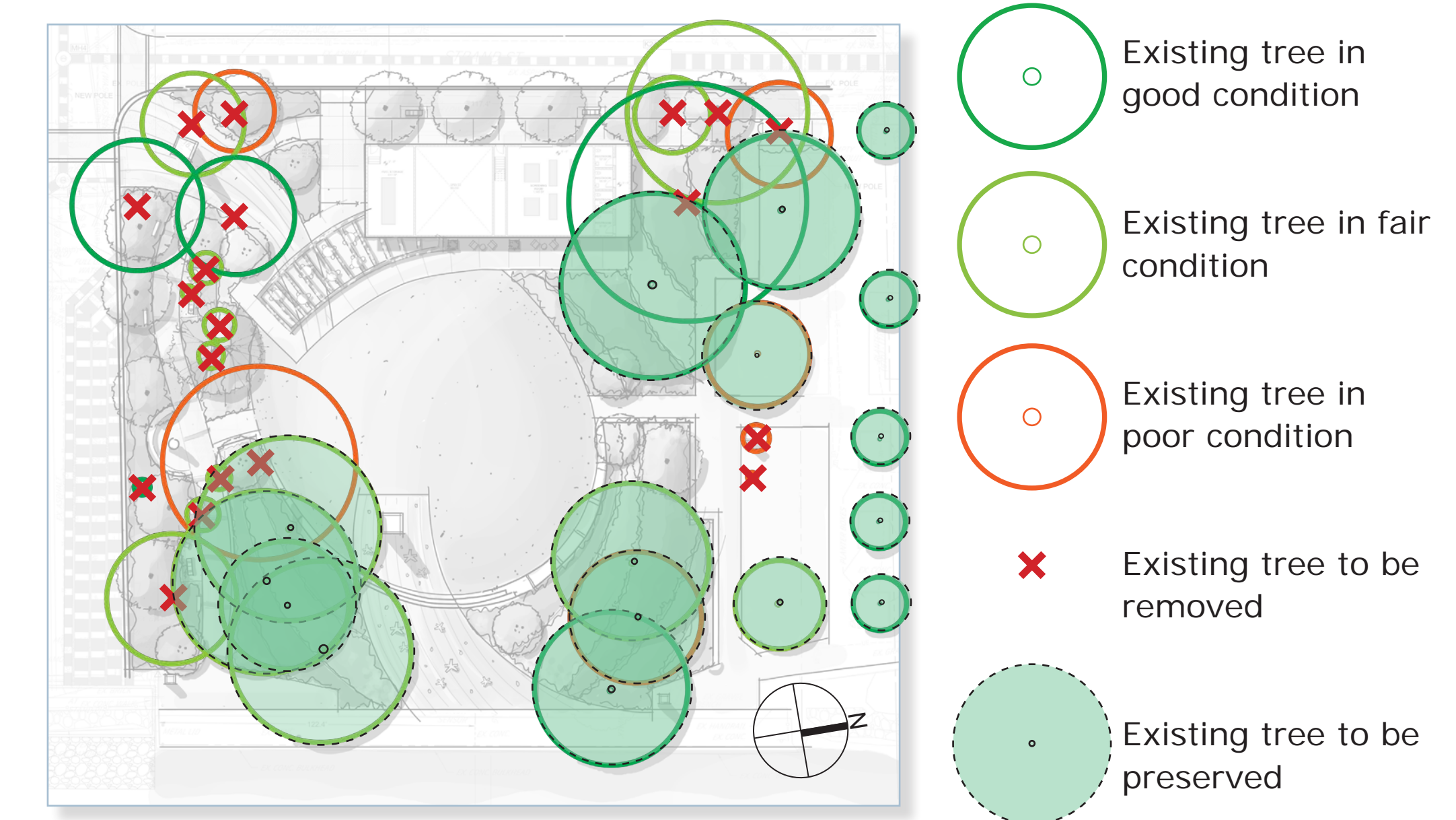
Waterfront Park Option 1B



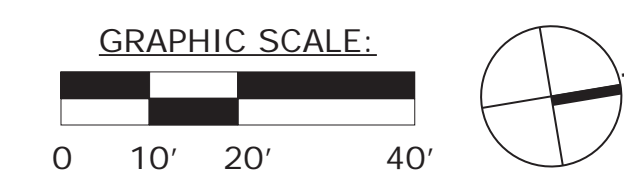
Legend:

- 1 Enhanced crosswalk
- 2 Entry signage/branding
- 3 Pump Station (103'-4" x 36'-6")
- 4 Pump station outdoor dining area with planters
- 5 Vine-covered shade structure with movable dining tables (to be relocated into lawn at performance times)
- 6 "Constellation Point" two-tier plaza with star-inspired furnishings and small at-grade uplights to suggest constellations
- 7 Lighthouse-inspired "Constellation Point" light column public art
- 8 "Boatwright's Passage" interpretive walkway with signage that tells the story of how ships were built (also provides ADA access to lower level waterfront)
- 9 "Boatwright's Passage" central node with seat wall
- 10 Seating node with crate-inspired chaise seats and benches
- 11 Stairs to lower-level plaza
- 12 Multi-use lawn (11,456 SF)
- 13 Preserved existing trees and proposed landscape with radial pattern
- 14 Performance staging area with vehicular-rated paving and removable metal screen
- 15 Flood/seat wall (ramp could be integrated here)
- 16 African American Heritage Trail sign location

Tree Preservation and Removal: Option 1B



Tree preservation and removal is conceptual only and subject to change as the design progresses.



Public Open House
November 2024