



City of Alexandria Waterfront Flood Mitigation Implementation

Draft, Deliberative, Pre-Decisional

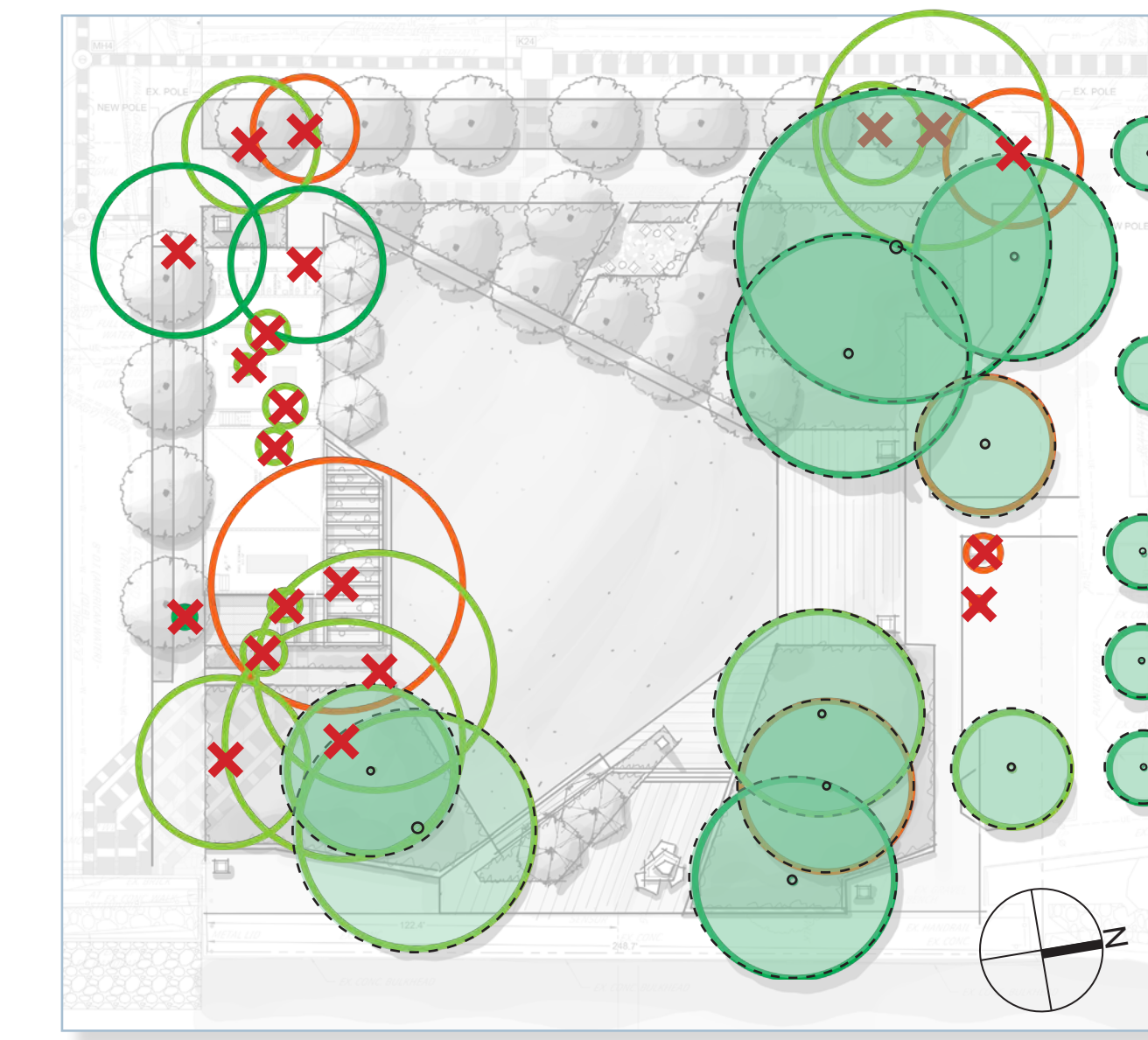
Waterfront Park Option 2A



Legend:

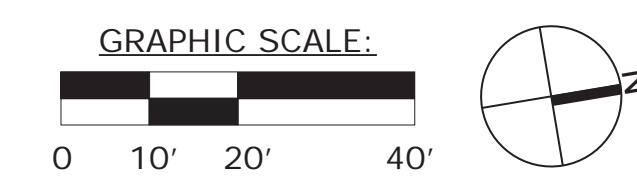
- 1 Pump Station (103'-4" x 36'-6")
- 2 Performance staging area with vehicular-rated paving and removable metal screen
- 3 Covered performance plaza with movable tables/chairs
- 4 Multi-use lawn (14,725 SF)
- 5 Preserved existing trees and proposed landscape
- 6 Entry space with signage and wayfinding
- 7 Tiered waterfront plaza
- 8 Festival plaza/multi-use hardscape with entry columns or pylons
- 9 Grand stairs
- 10 Ramp with seat wall at lawn
- 11 Naturalized waterfront planting
- 12 Art element - photo opportunity
- 13 Plant screening from lawn access path
- 14 African American Heritage Trail sign location
- 15 Flood wall (conceptual)

Tree Preservation and Removal: Option 2A



- Existing tree in good condition
- Existing tree in fair condition
- Existing tree in poor condition
- Existing tree to be removed
- Existing tree to be preserved

Tree preservation and removal is conceptual only and subject to change as the design progresses.



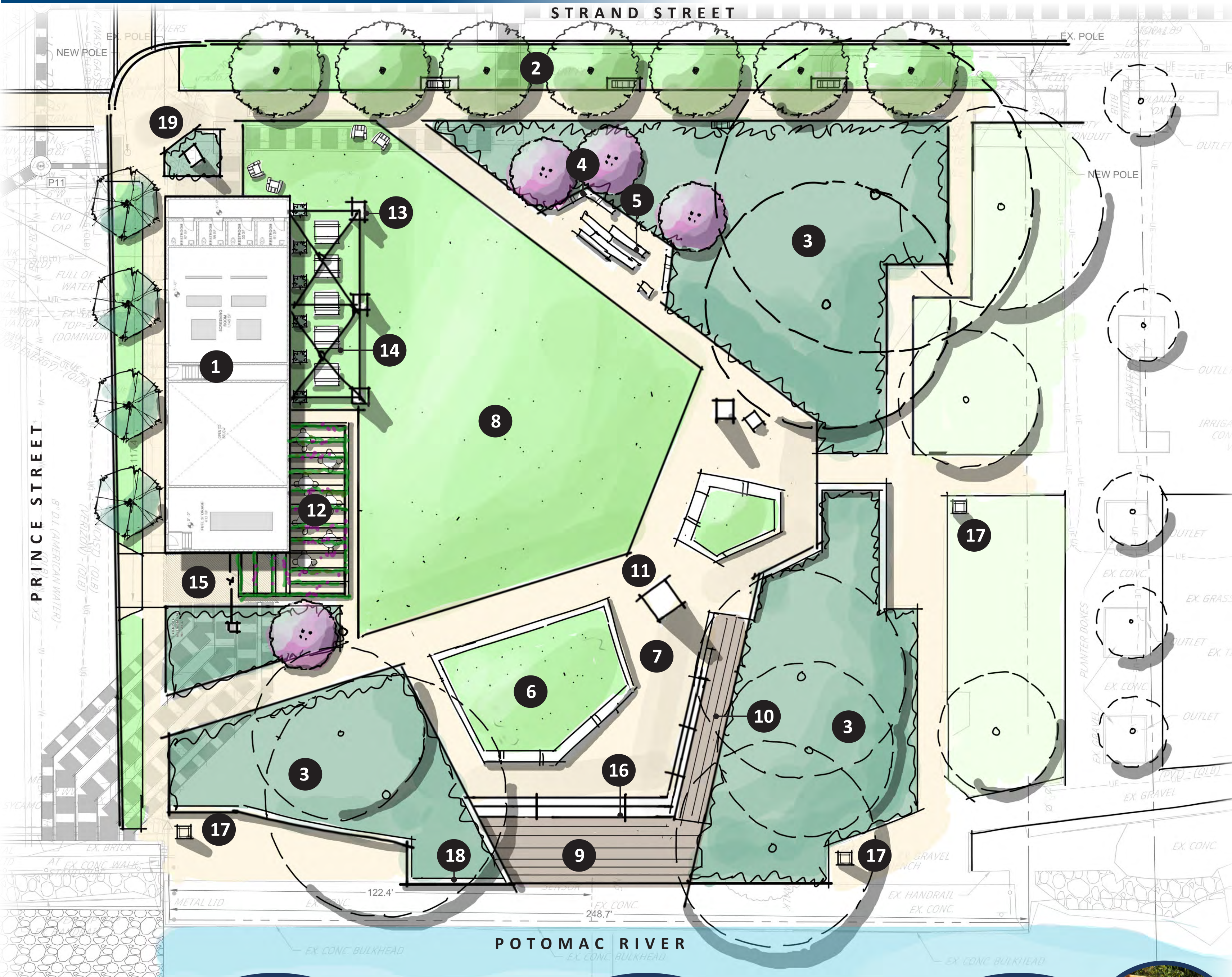
Public Open House
November 2024



City of Alexandria Waterfront Flood Mitigation Implementation

Draft, Deliberative, Pre-Decisional

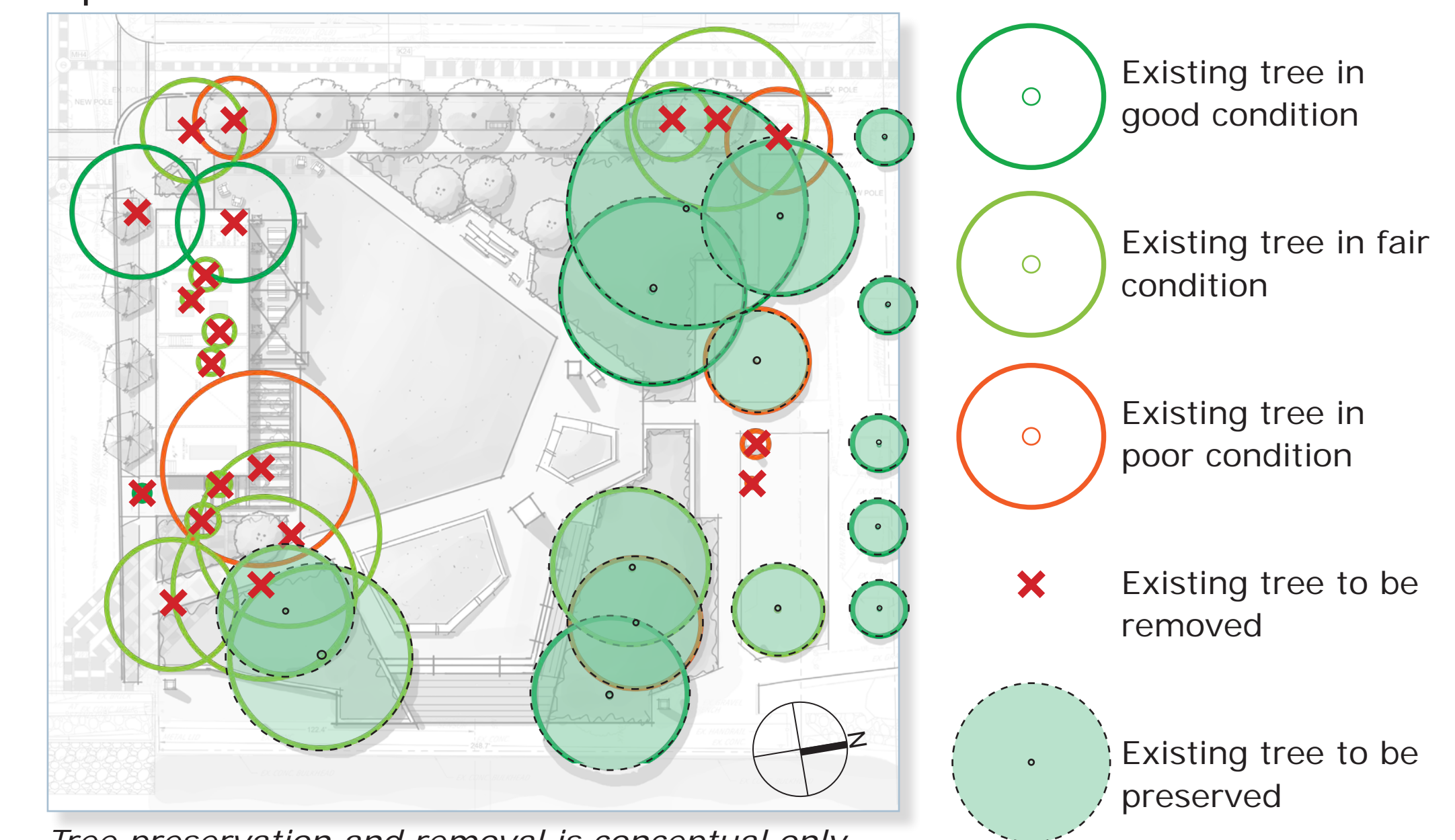
Waterfront Park Option 2B



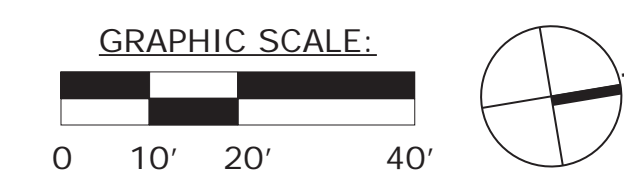
Legend:

- 1 Pump Station (103'-4" x 36'-6")
- 2 Street tree planting with benches
- 3 Preserved existing trees and proposed landscape
- 4 Seat wall
- 5 Boat-builders seating / climbable sculpture
- 6 Sloped lawn panel with metal edge / seat wall
- 7 Plaza
- 8 Event lawn (11,384 SF)
- 9 Waterfront deck
- 10 Vanishing stairs/ADA ramp
- 11 Art / themed element / signage
- 12 Vine-covered shade structure for performances with movable seating below
- 13 Signature cobble gabion column
- 14 Beer garden / picnic tables with catenary lighting and planters
- 15 Performance staging area with vehicular-rated paving and removable metal screen
- 16 Grand stairs with floating lighting
- 17 African American Heritage Trail sign location
- 18 Flood wall (conceptual)
- 19 Entry space with signage and wayfinding

Tree Preservation and Removal: Option 2B



Tree preservation and removal is conceptual only and subject to change as the design progresses.



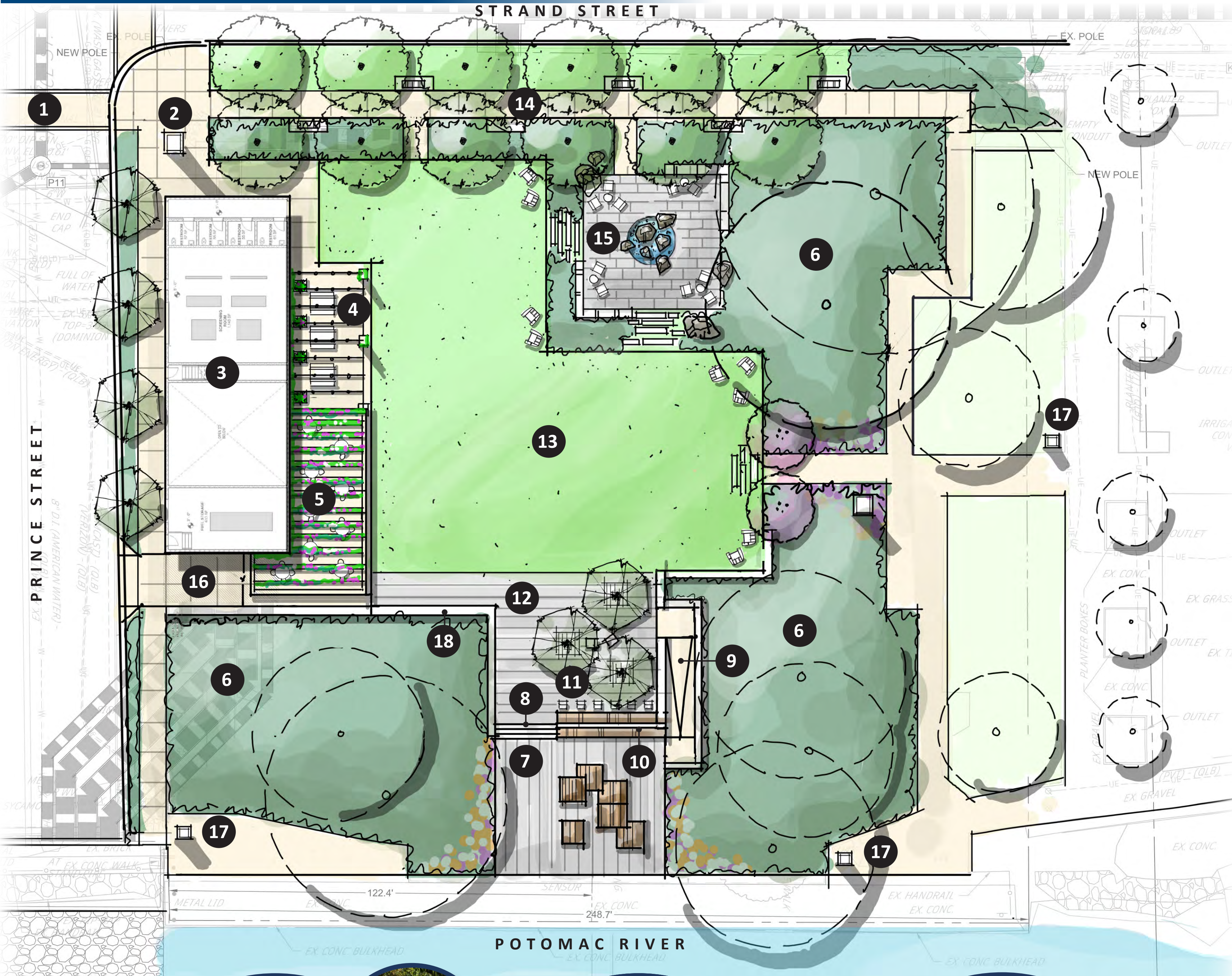
Public Open House
November 2024



City of Alexandria Waterfront Flood Mitigation Implementation

Draft, Deliberative, Pre-Decisional

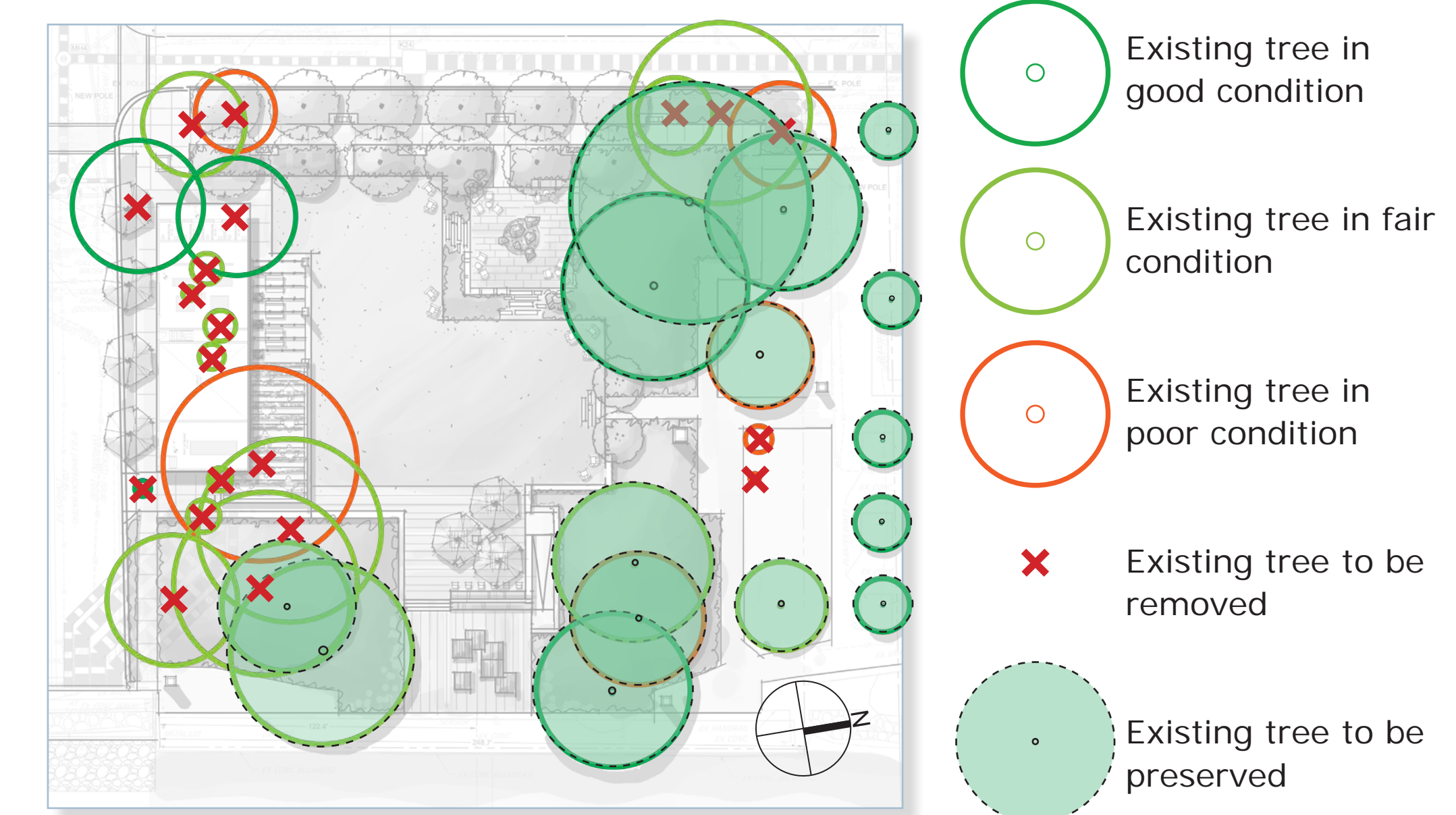
Waterfront Park Option 2C



Legend:

- 1 Enhanced crosswalk
- 2 Entry signage / branding
- 3 Pump Station (103'-4" x 36'-6")
- 4 Pump House Patio: beer-garden style picnic/outdoor dining area with planters and catenary lighting
- 5 Vine-covered shade structure with movable dining tables (to be relocated into lawn at performance times)
- 6 Preserved existing trees and proposed landscape
- 7 Waterfront plaza with ship crate-inspired sculptural seating
- 8 Grand stairs
- 9 Access ramp (approx. 7% slope, handrail required)
- 10 Backed seat / flood wall
- 11 Raised dining counter with bar stools
- 12 Upper plaza with trees and seat "crates"
- 13 Multi-use lawn (10,442 SF)
- 14 Formal tree-lined corridor with seating
- 15 Garden with reused boulder water feature (or specimen tree or art), movable tables/chairs, and seat walls
- 16 Performance staging area with vehicular-rated paving and removable metal screen
- 17 African American Heritage Trail sign location
- 18 Flood wall (conceptual)

Tree Preservation and Removal: Option 2C



Tree preservation and removal is conceptual only and subject to change as the design progresses.



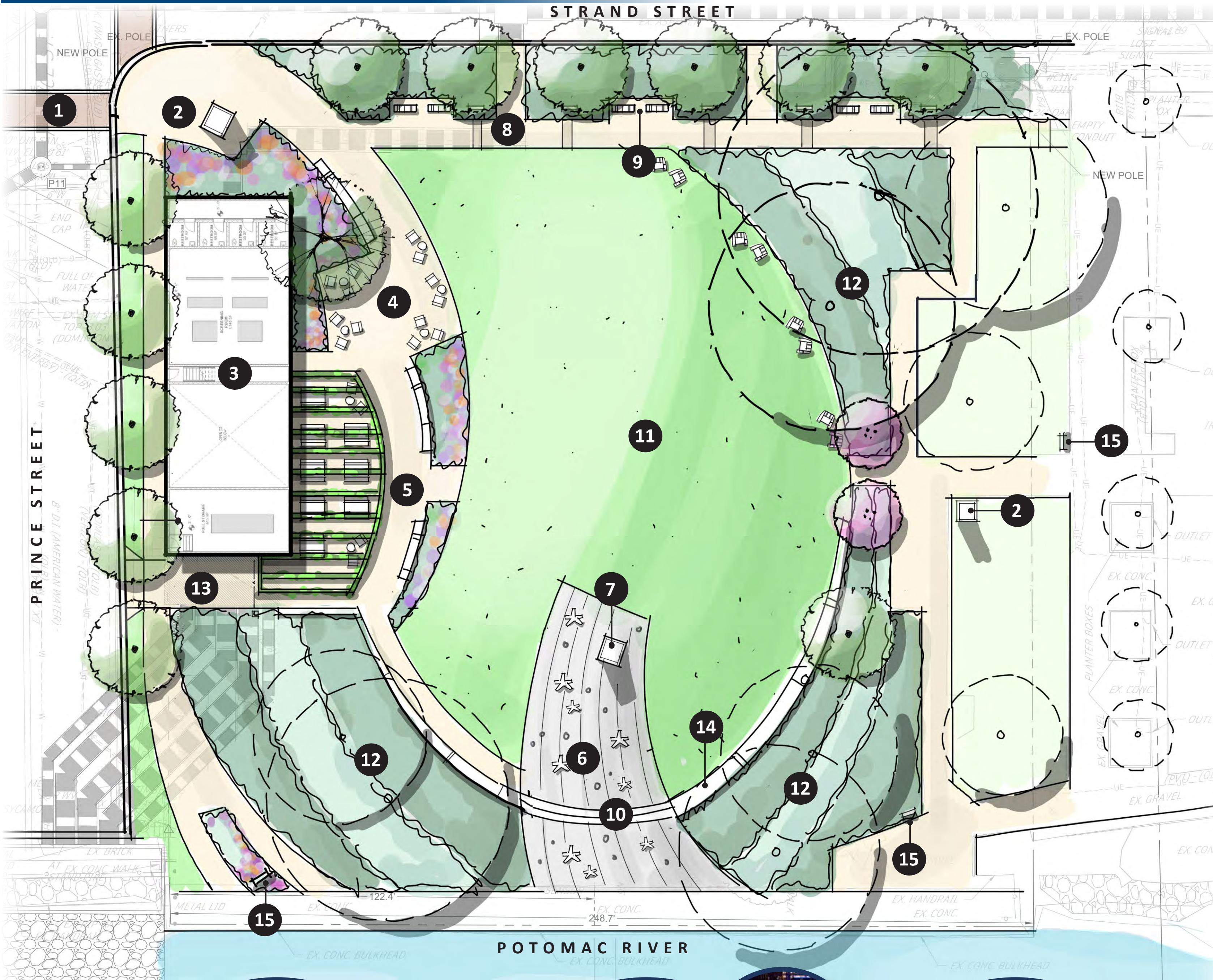
Public Open House
November 2024



City of Alexandria Waterfront Flood Mitigation Implementation

Draft, Deliberative, Pre-Decisional

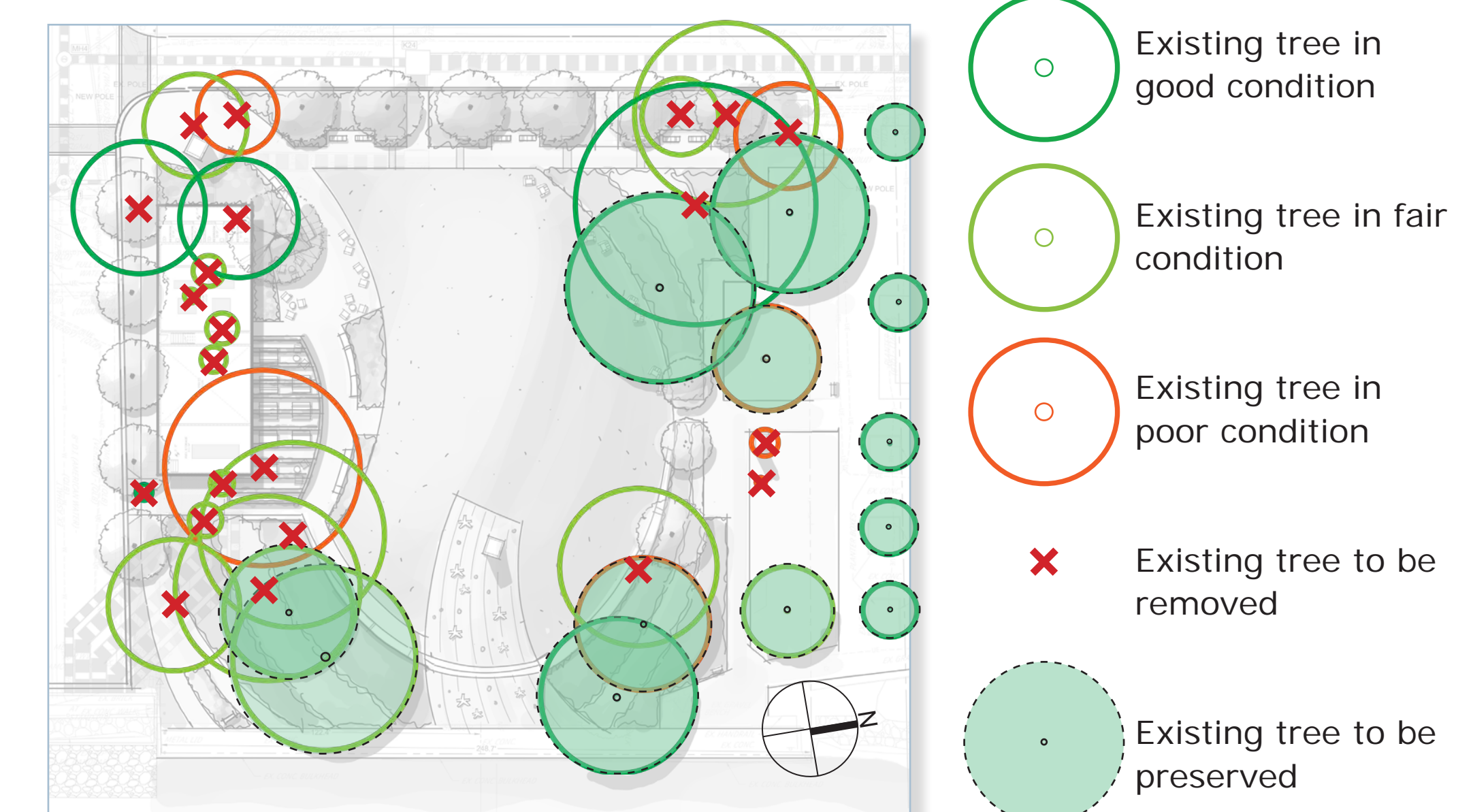
Waterfront Park Option 2D



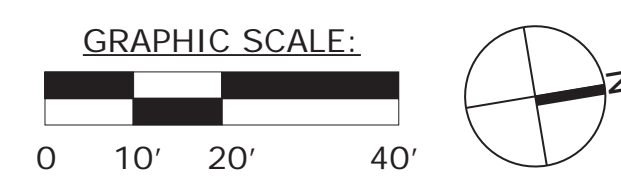
Legend:

- 1 Enhanced crosswalk
- 2 Entry signage/branding
- 3 Pump Station (103'-4" x 36'-6")
- 4 Pump station patio outdoor dining area with planting
- 5 Vine-covered shade structure with movable dining tables (to be relocated into lawn at performance times)
- 6 "Constellation Point" two-tier plaza with star-inspired furnishings and small at-grade uplights to suggest the constellations
- 7 Lighthouse-inspired "Constellation Point" light column public art
- 8 "Boatwright's Passage" interpretive walkway with signage that tells the story of how ships were built
- 9 Seating node with crate-inspired chaise seats and benches
- 10 Stairs to waterfront plaza (ramp could be incorporated along seat wall)
- 11 Multi-use lawn (16,947 SF)
- 12 Preserved existing trees and proposed landscape with radial planting design
- 13 Performance staging area with vehicular-rated paving and removable metal screen
- 14 Flood/seat wall
- 15 African American Heritage Trail sign location

Tree Preservation and Removal: Option 2D



Tree preservation and removal is conceptual only and subject to change as the design progresses.



Public Open House
November 2024