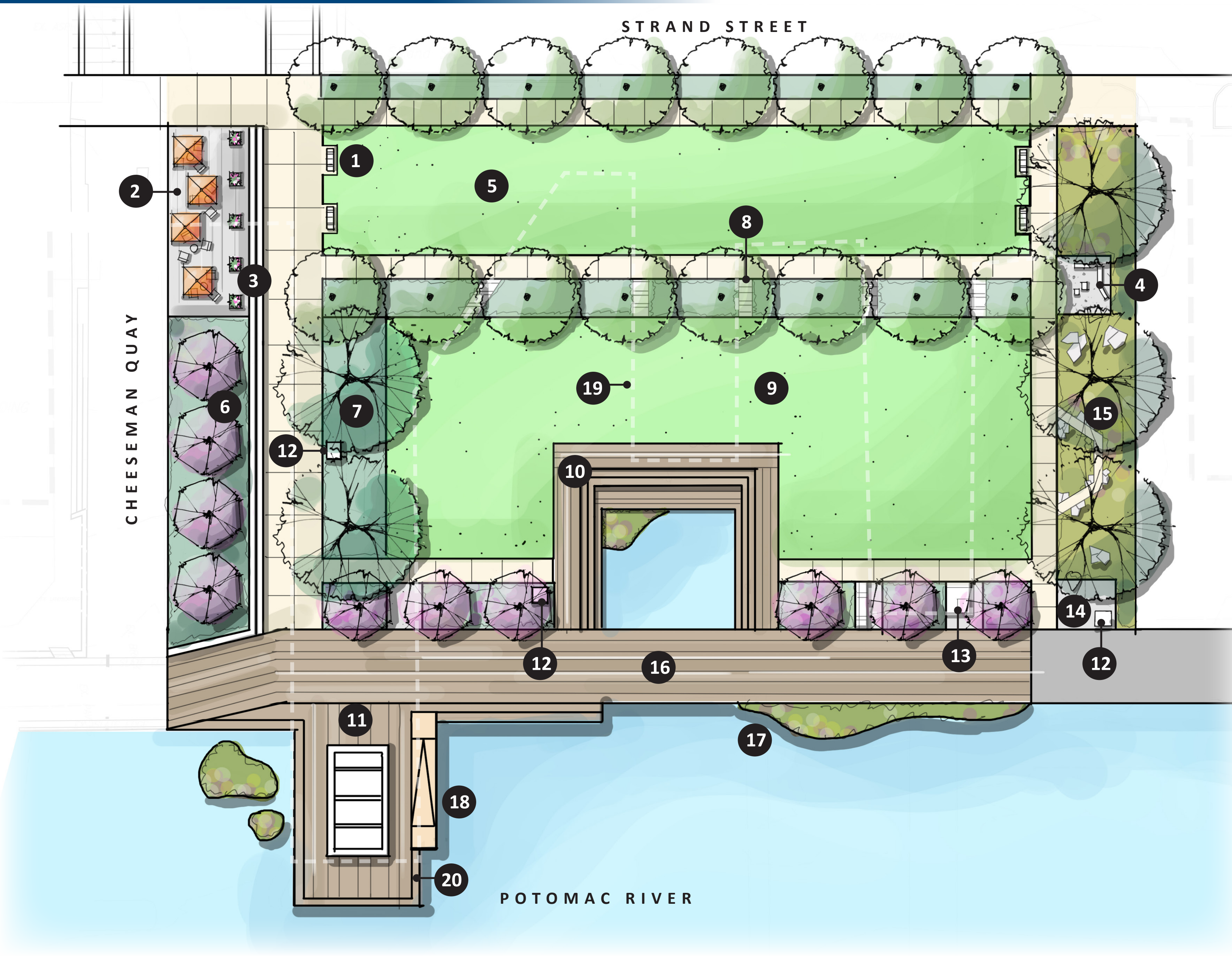




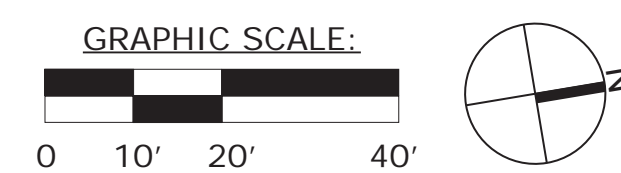
# City of Alexandria Waterfront Flood Mitigation Implementation

Draft, Deliberative, Pre-Decisional

## Point Lumley Option 1



- 1 Seating node
- 2 Plaza with movable tables, chairs, shade umbrellas, and planters (EVE access)
- 3 Vanishing (sloped) stairs with integrated seating and planter
- 4 Nature exploration / education space
- 5 Tree-lined passive lawn; Potential future bequest garden location (7,183 SF)
- 6 Ornamental trees and planter
- 7 Landscape
- 8 Cobble stepping stone paths aligned with historic shoreline
- 9 Lawn (10,605 SF)
- 10 Wood decking path and stepped seating to water
- 11 Wharf with historic cribbing-inspired shade structure
- 12 African American Historical Trail sign location
- 13 Public art with integrated seating
- 14 Kids play zone
- 15 Bioretention with boulders and exploration path
- 16 Promenade
- 17 Floating wetlands
- 18 Boat launch
- 19 Historic shoreline (approximate, for reference only)
- 20 Steps to water



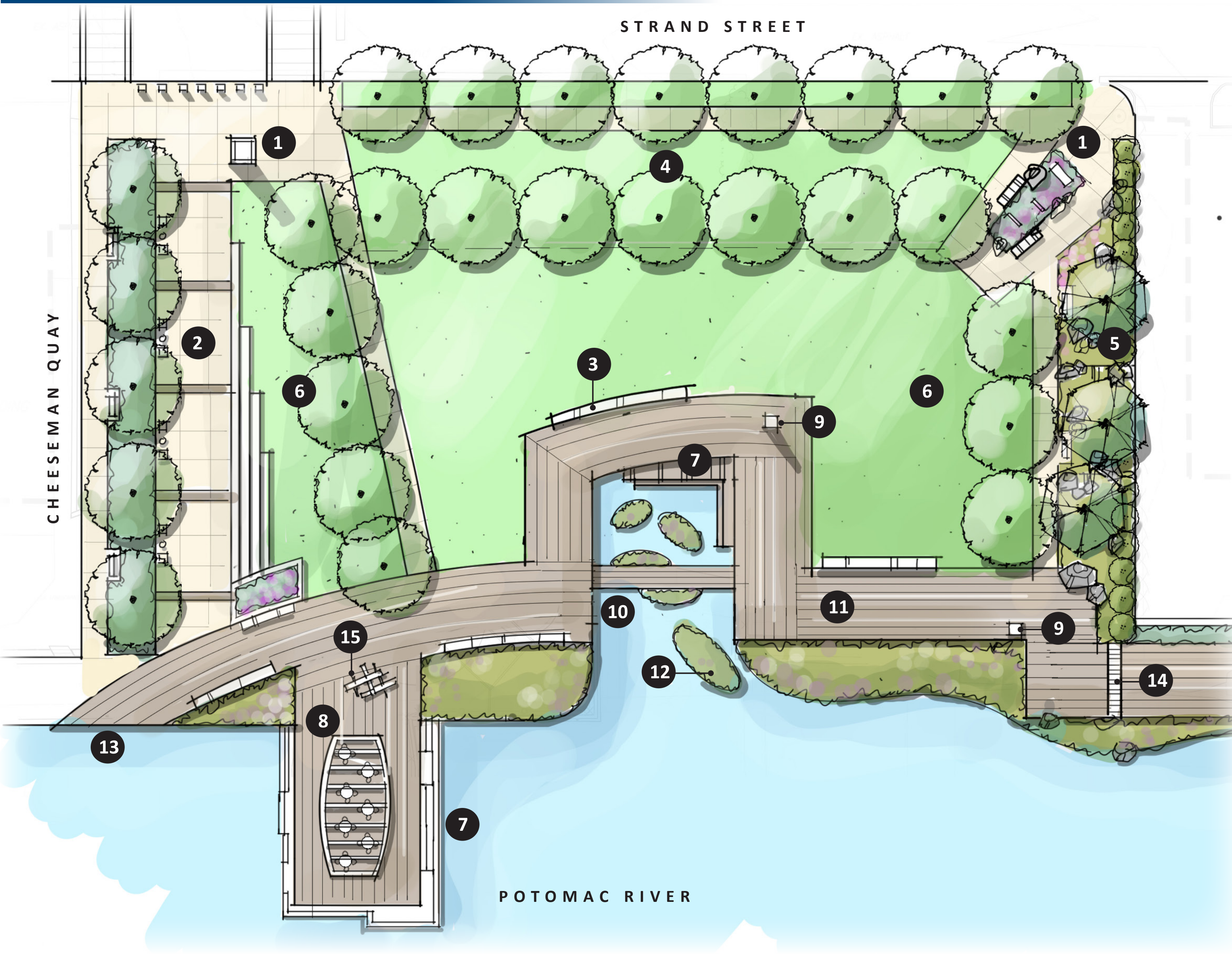


# City of Alexandria

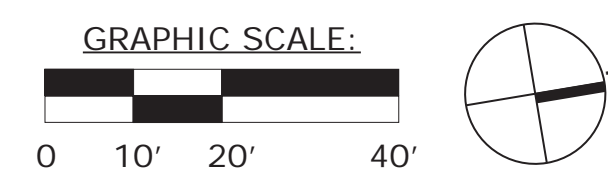
## Waterfront Flood Mitigation Implementation

Draft, Deliberative, Pre-Decisional

### Point Lumley Option 2

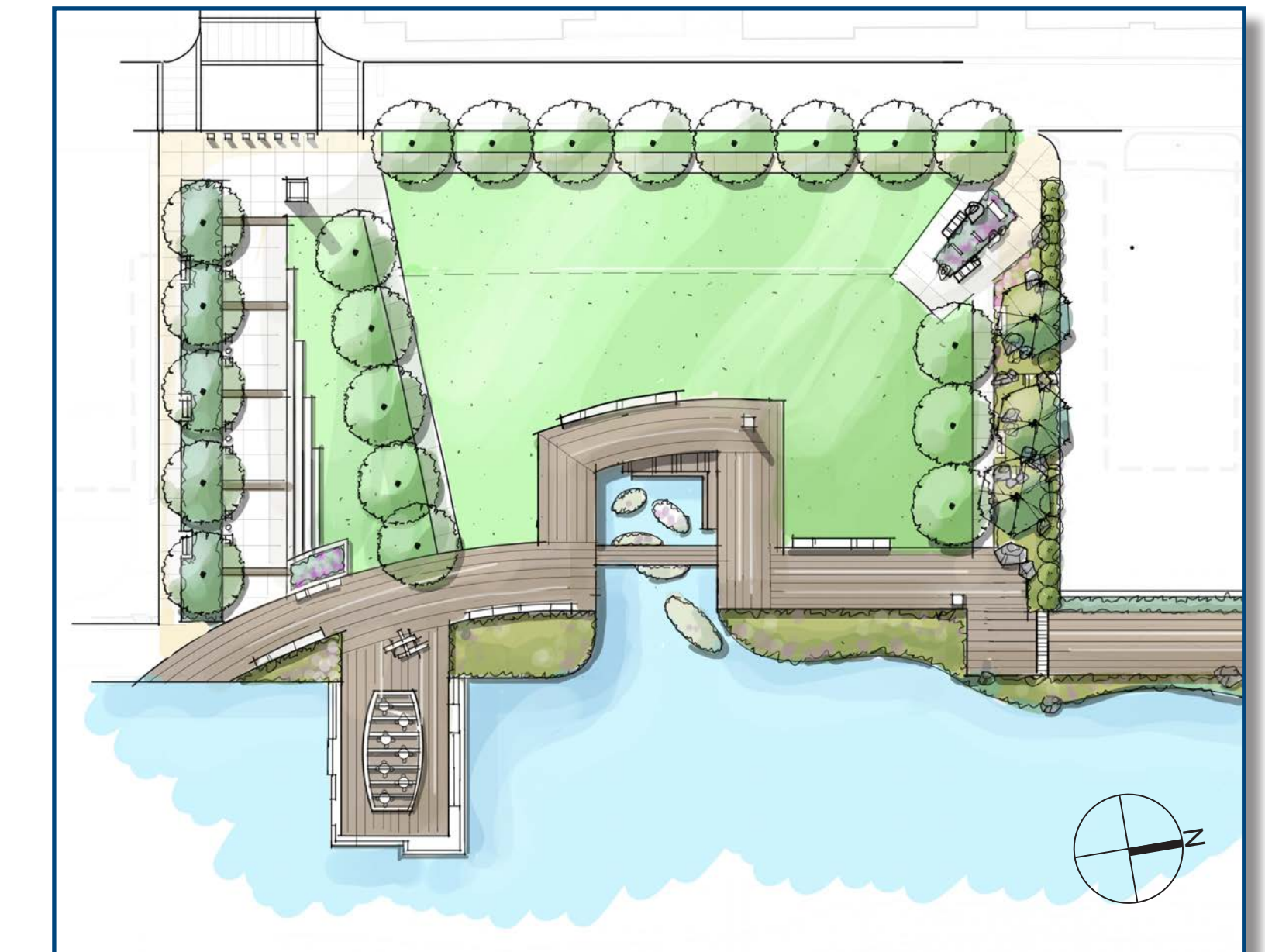


- 1 Entry plaza with arrival signage
- 2 Gateway corridor (22' EVE) with movable tables and chairs; could include inscribed paving bands and/or signage to document the history of "banking out" and how it created a gateway from Alexandria to the world
- 3 Seat wall
- 4 Tree-lined passive lawn; Potential future bequest garden location (7,183 SF)
- 5 Bioswale with interpretive signage
- 6 Lawn (12,378 SF)
- 7 Stepped seating to water
- 8 Wharf with shade structure
- 9 African American Historical Trail sign location
- 10 Discovery cove with floating wetlands and kid-scaled bridge with signage
- 11 Promenade
- 12 Floating wetlands
- 13 Opportunity for boat launch (location TBD)
- 14 Stormwater grate drain through promenade
- 15 Ship artifact or art



#### Alternate 1:

Second row of trees is removed to increase the lawn size



#### Alternate 2:

A grove of trees follows the historic shoreline layout

