



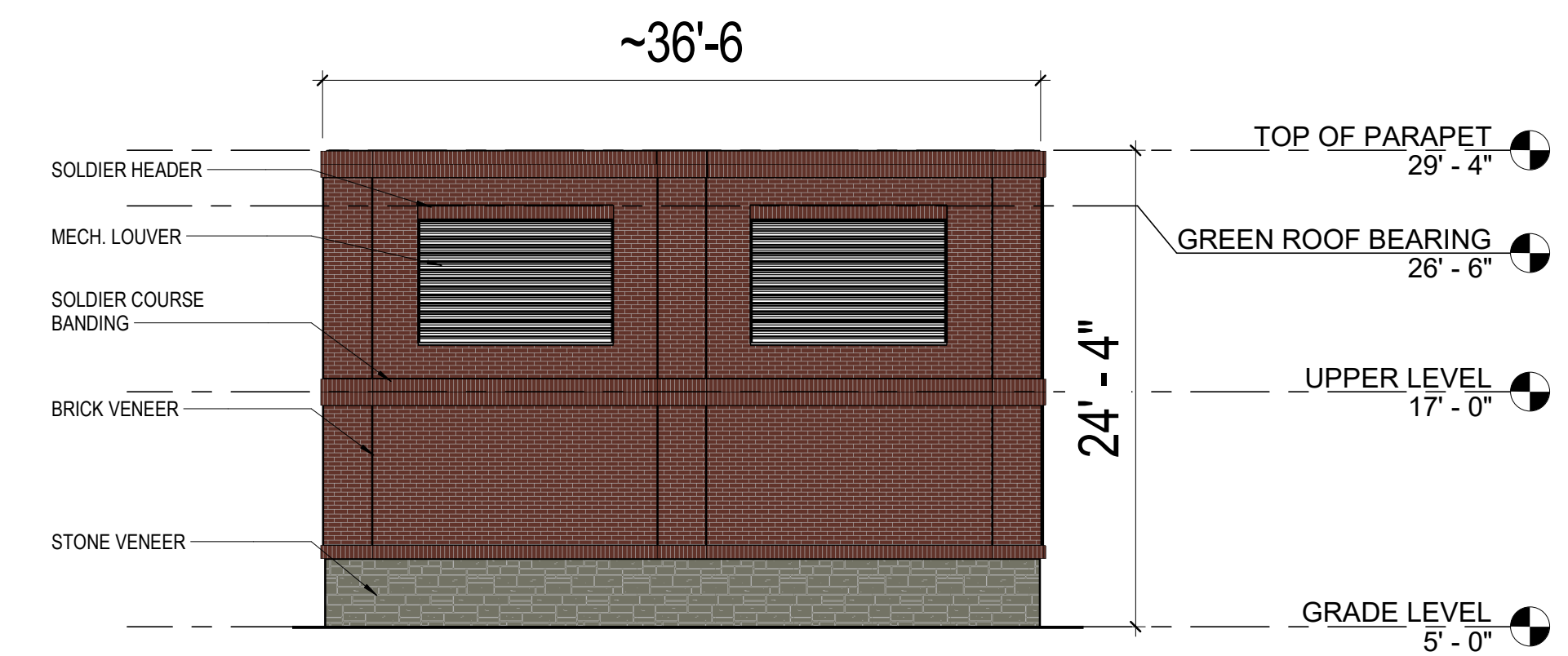
City of Alexandria Waterfront Flood Mitigation Implementation

Draft, Deliberative, Pre-Decisional

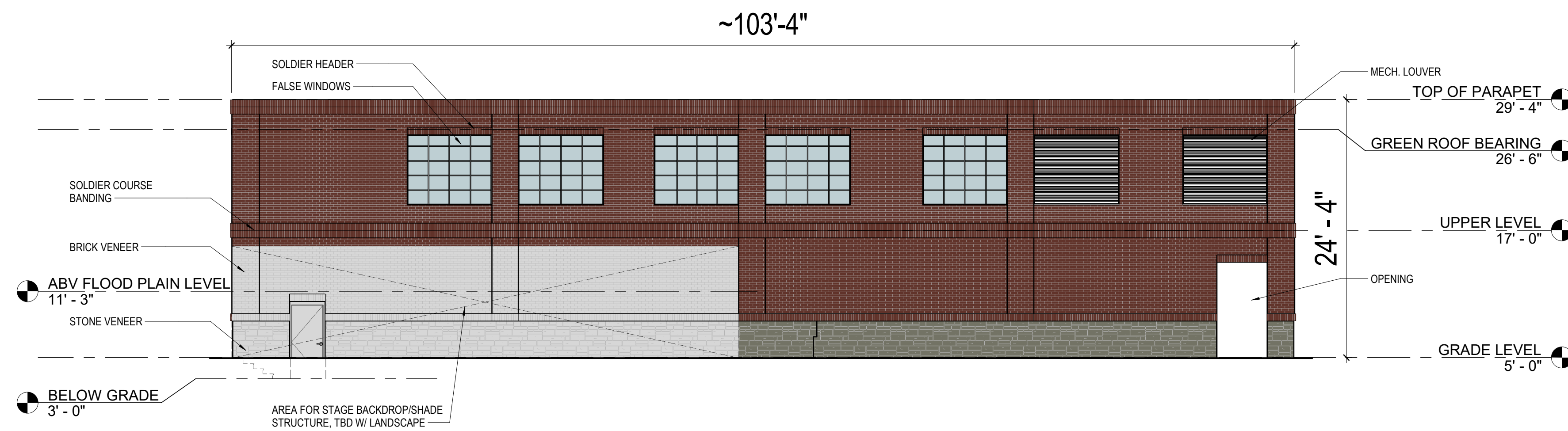
Waterfront Park Option 1 - Pump Station Elevations



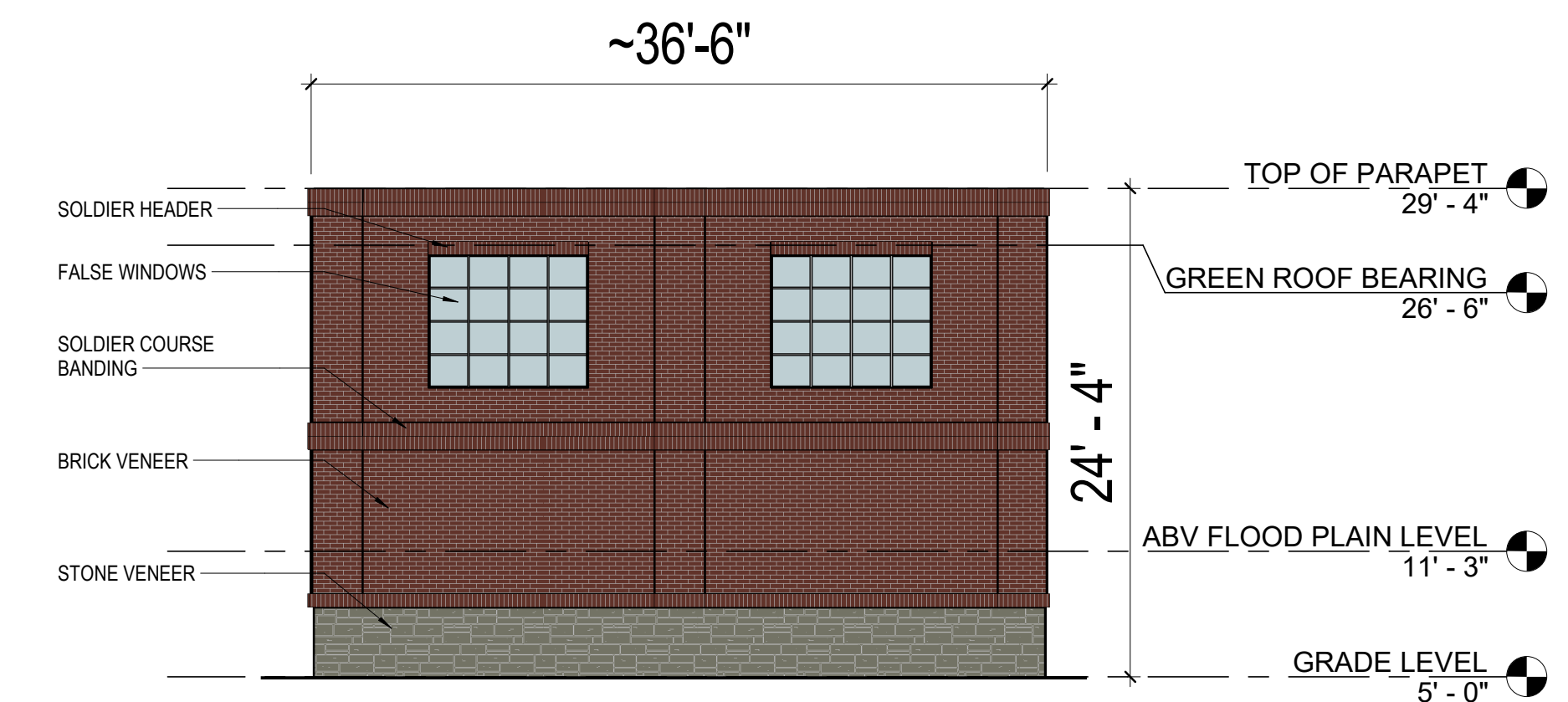
1 WEST ELEVATION- OPTION 1 - VIEW FROM STRAND STREET
C-011 1/8" = 1'-0"



3 NORTH ELEVATION - OPTION 1
C-011 1/8" = 1'-0"



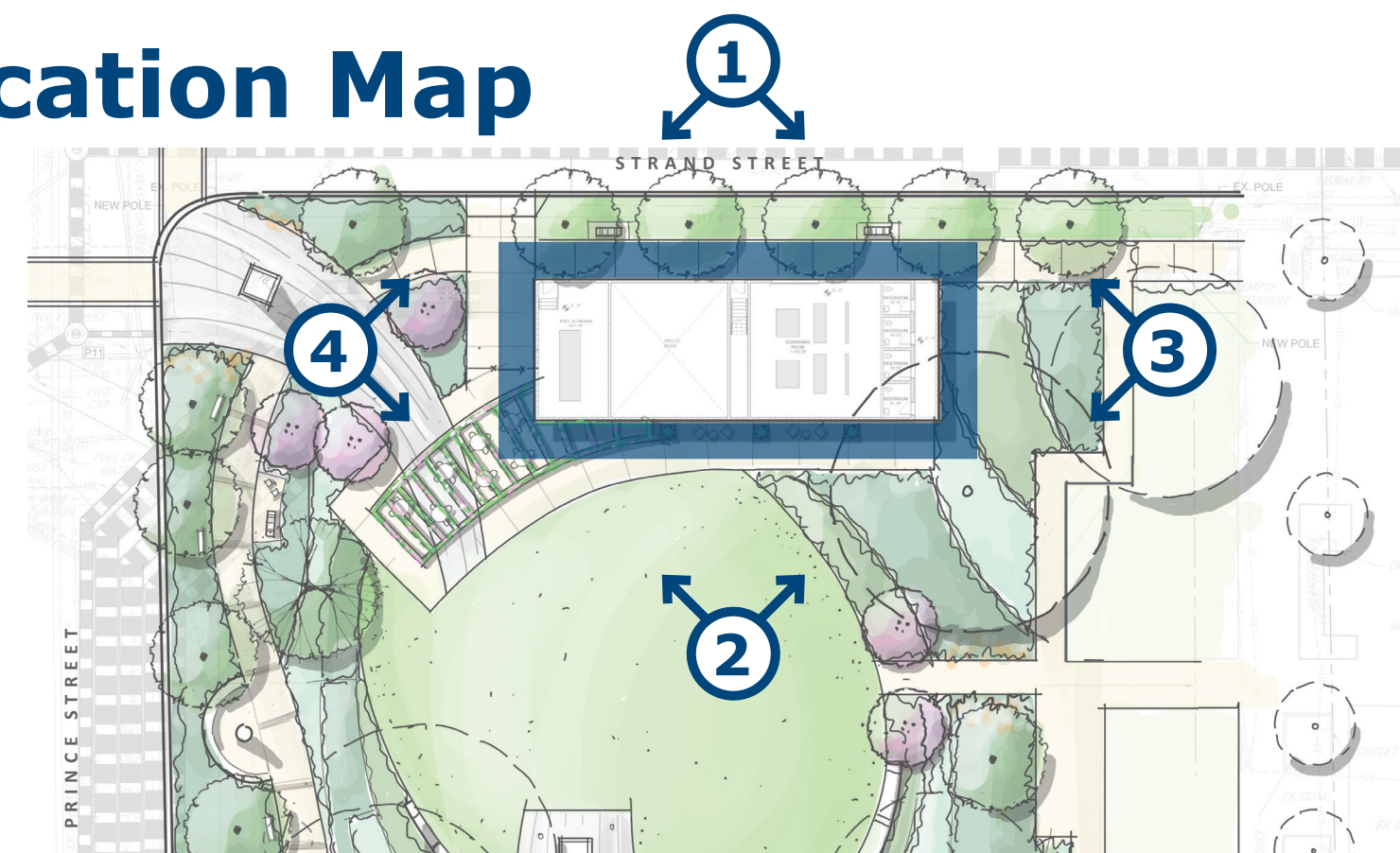
2 EAST ELEVATION - OPTION 1 - VIEW FROM WATERFRONT PARK
C-011 1/8" = 1'-0"

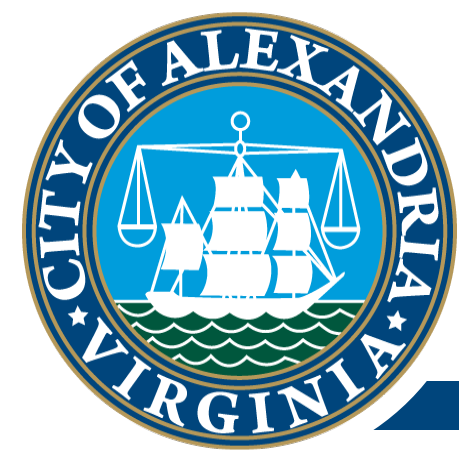


4 SOUTH ELEVATION - OPTION 1
C-011 1/8" = 1'-0"



Location Map

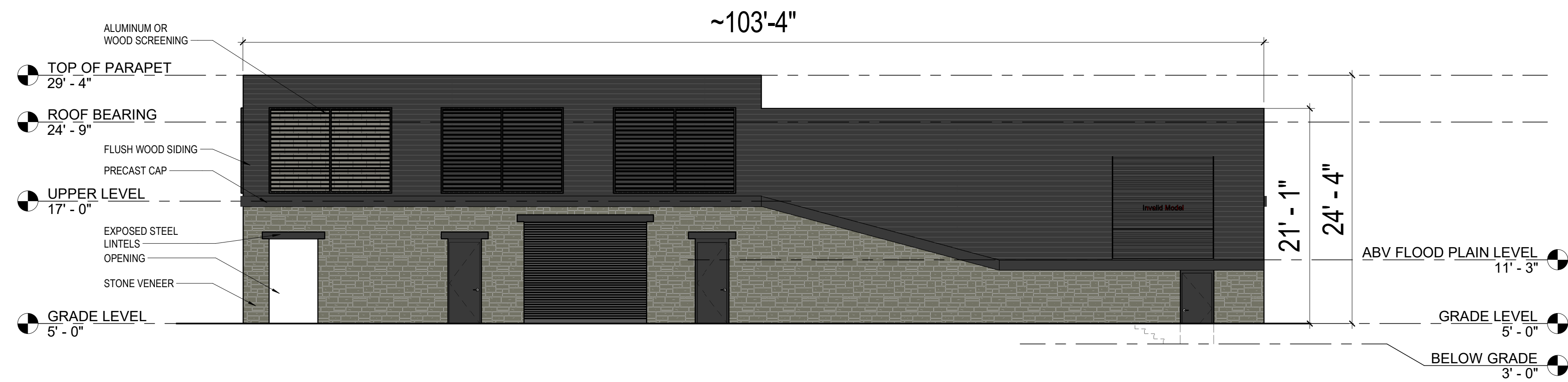




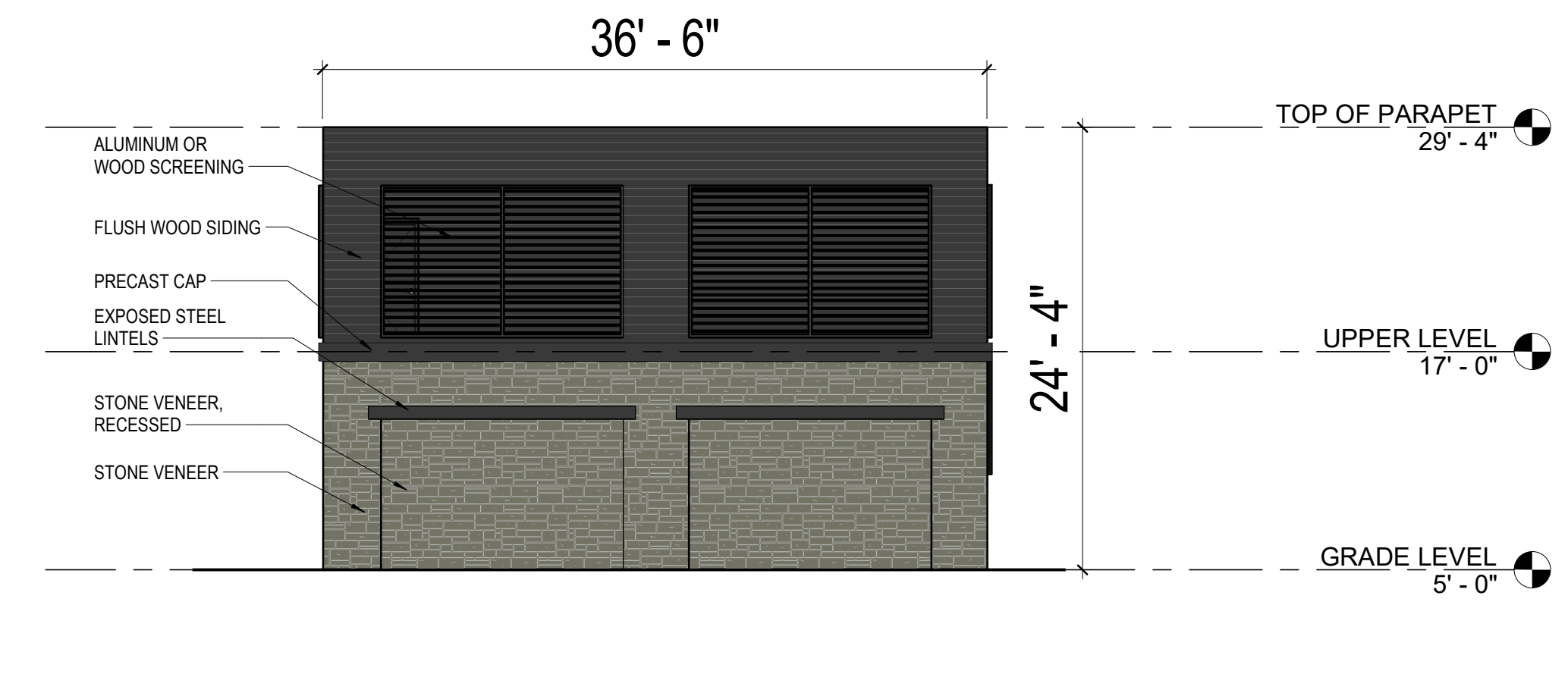
City of Alexandria Waterfront Flood Mitigation Implementation

Draft, Deliberative, Pre-Decisional

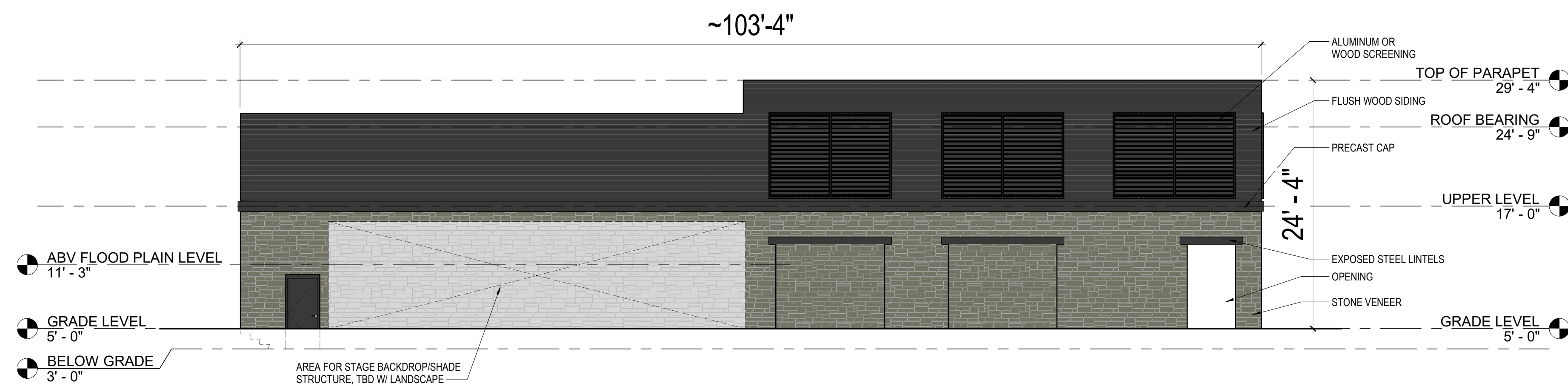
Waterfront Park Option 2 - Pump Station Elevations



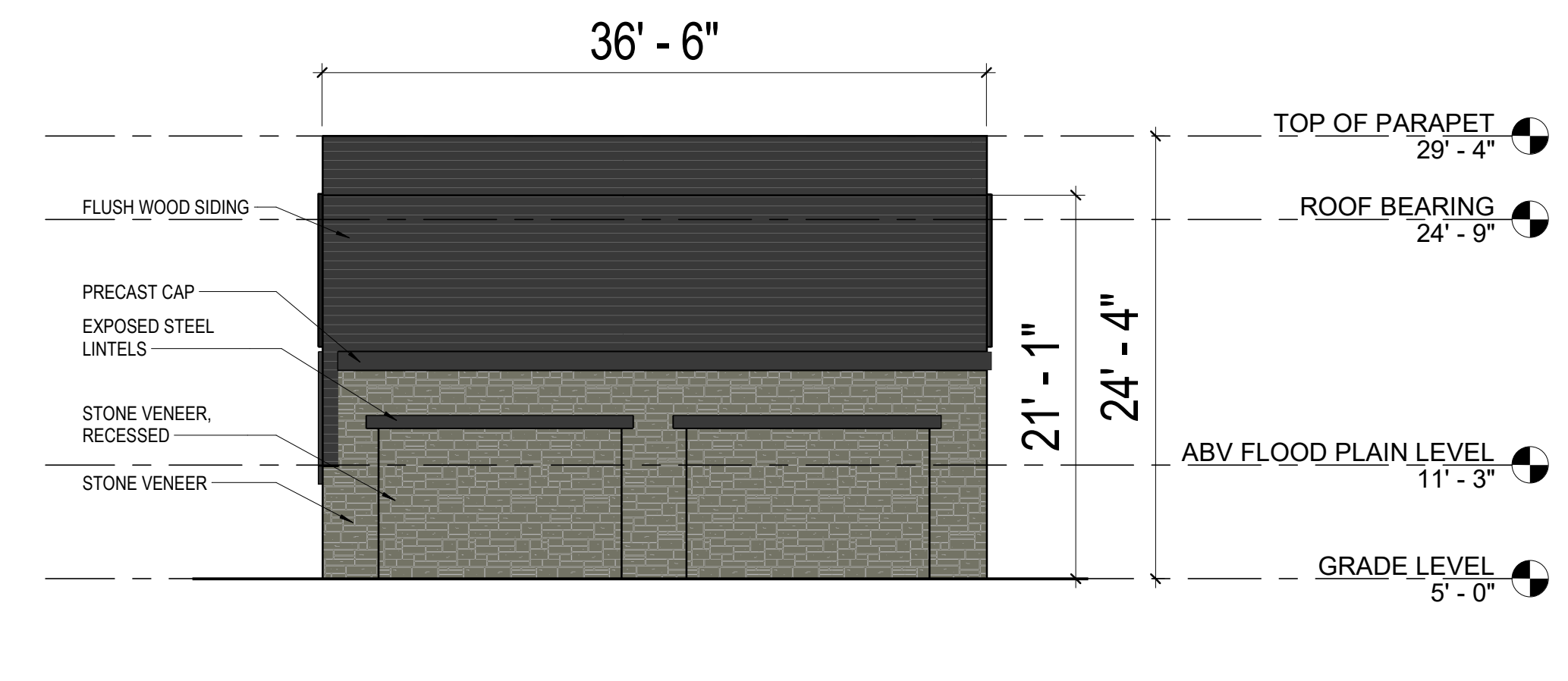
1 SOUTH ELEVATION - OPTION 2 - VIEW FROM PRINCE STREET
C-010 1/8" = 1'-0"



2 WEST ELEVATION - OPTION 2
C-010 1/8" = 1'-0"



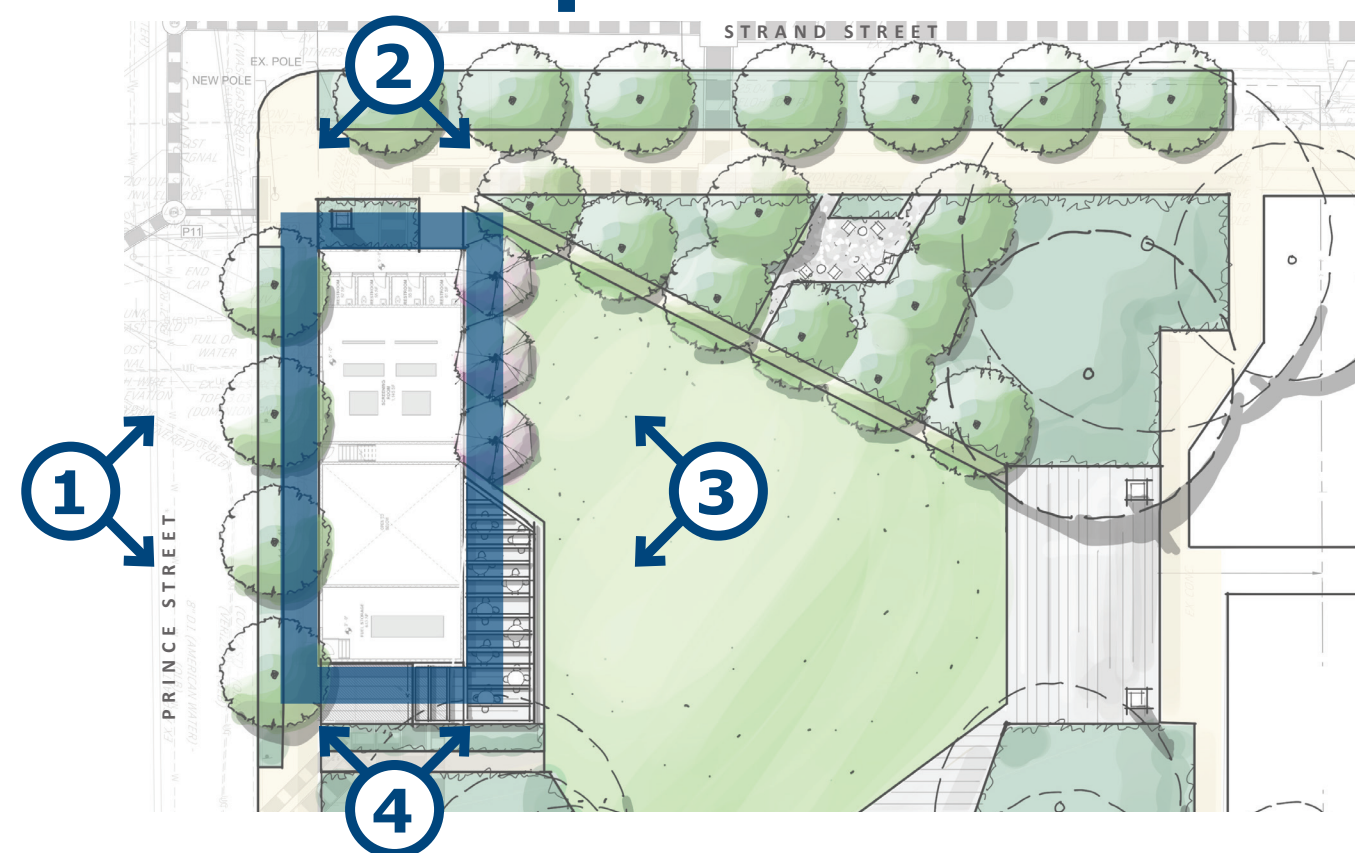
3 NORTH ELEVATION - OPTION 2 - VIEW FROM WATERFRONT PARK
C-010 1/8" = 1'-0"



4 EAST ELEVATION - OPTION 2
C-010 1/8" = 1'-0"



Location Map

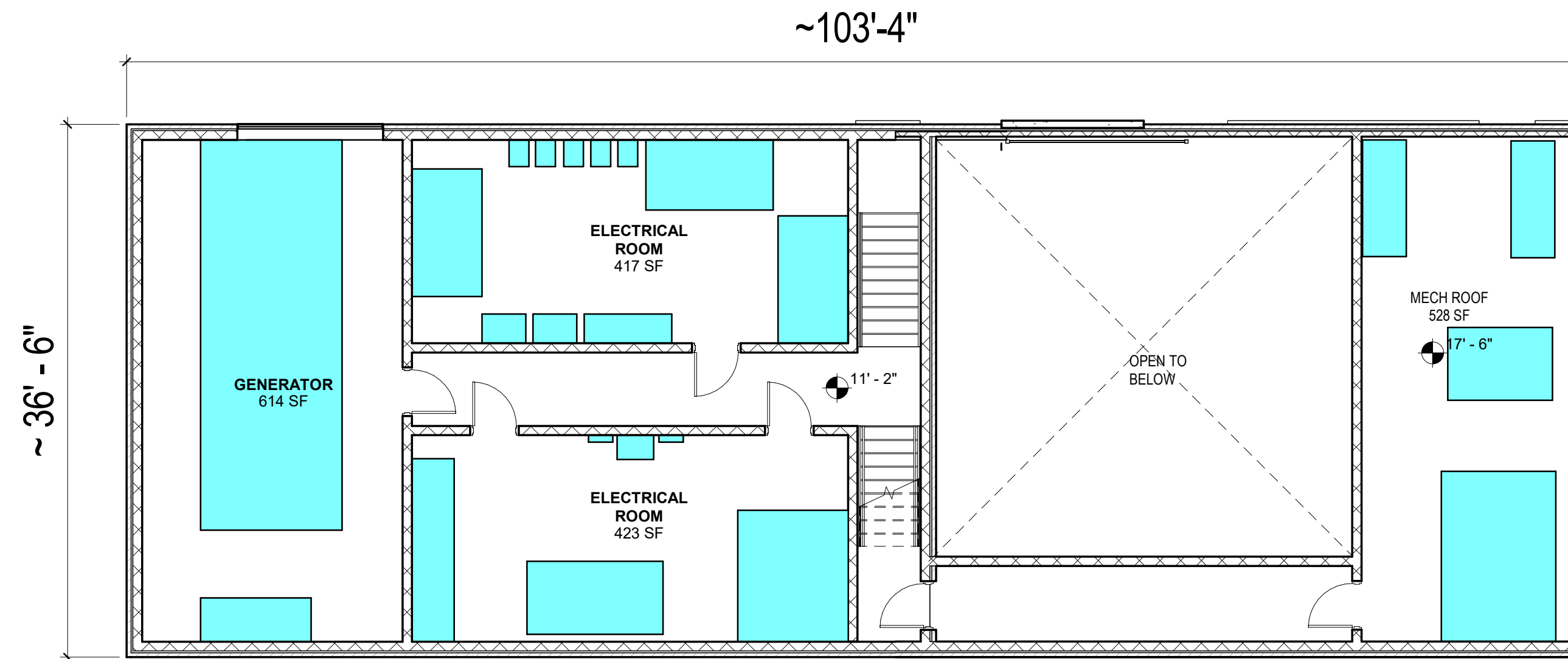




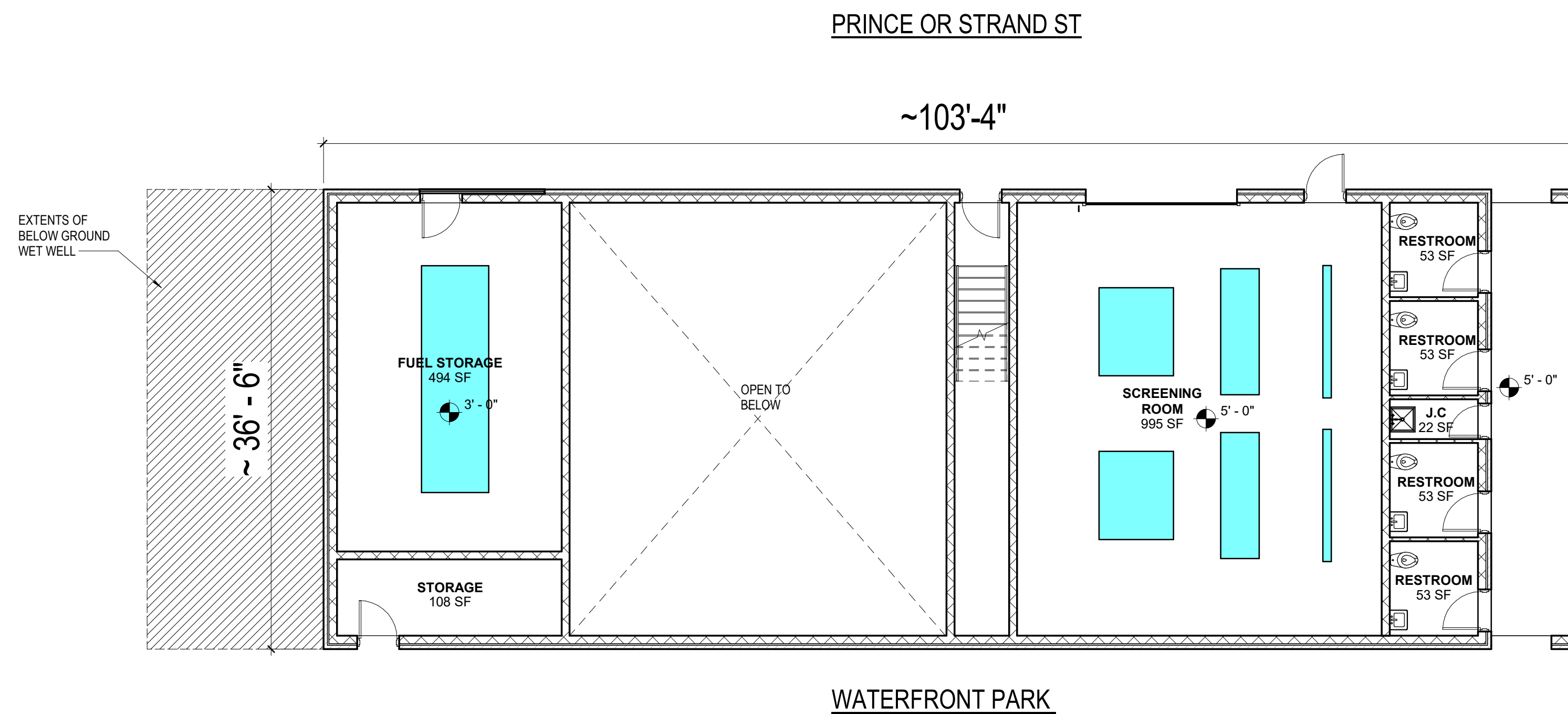
City of Alexandria

Waterfront Flood Mitigation Implementation

Draft, Deliberative, Pre-Decisional



FLOOR PLAN - 11.2' ELEVATION OPTION 1 OR 2
1/8" = 1'-0"



FLOOR PLAN - GRADE LEVEL OPTION 1 OR 2
1/8" = 1'-0"

Option 6 - Proposed Plans:

- Proposed height (flat roof) = +/- 24'
- Single, smaller mass of building, smallest overall impact to park (can be sited on Strand or on Prince)
- Most first floor program elements are at grade, fuel storage is below grade over wet well
- Most first floor program elements are at grade, fuel storage is below grade over wet well
- Critical electrical infrastructure at el. 11.2'
- Redundant screen
- Smaller footprint for restrooms
- Mechanical roof can be open to elements on 3 sides