

# Alexandria's 2024 Community Health Assessment

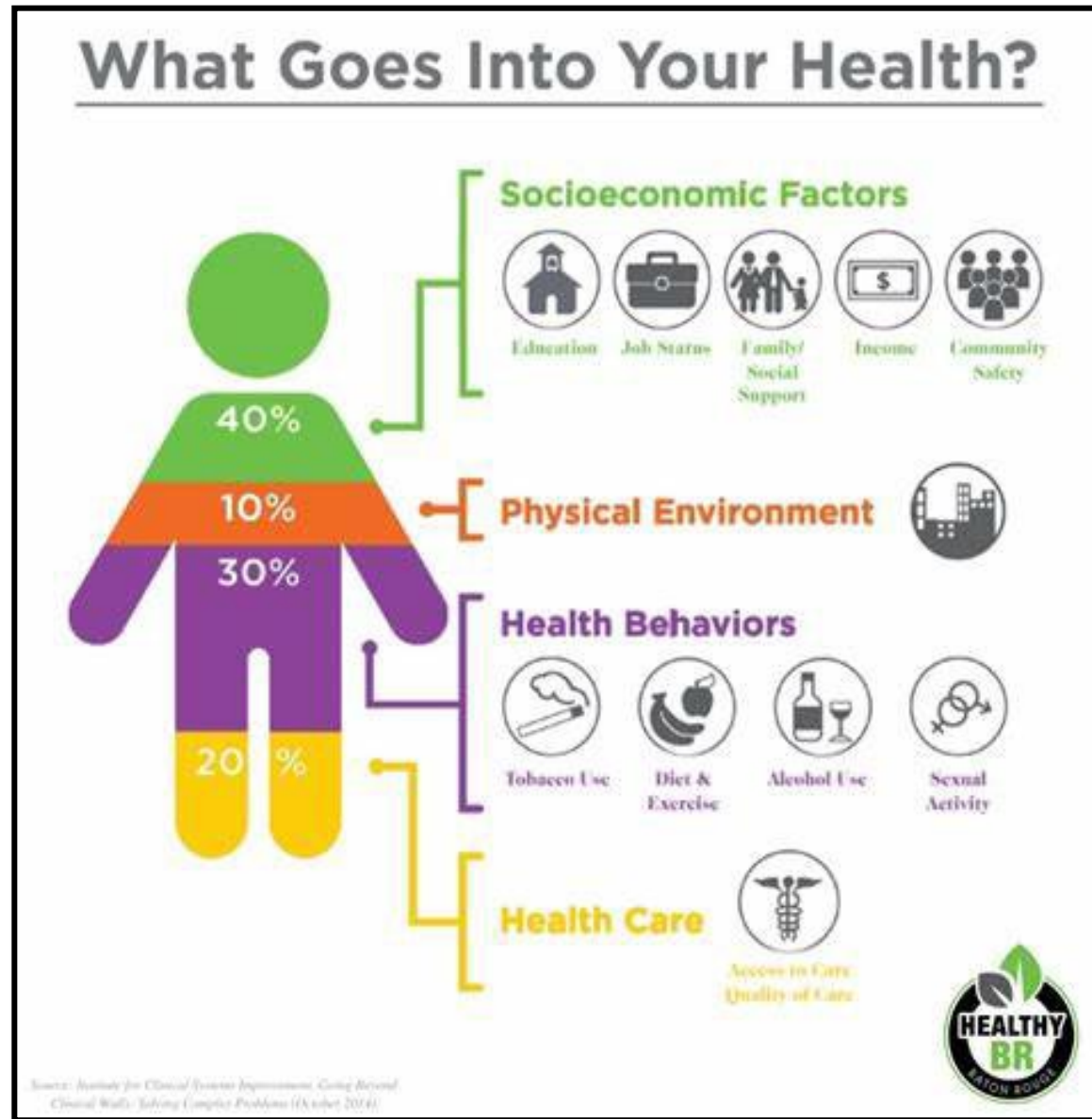
Sean Curry, Alexandria Health Department

---

Sept. 2024



# How Healthy is Alexandria?

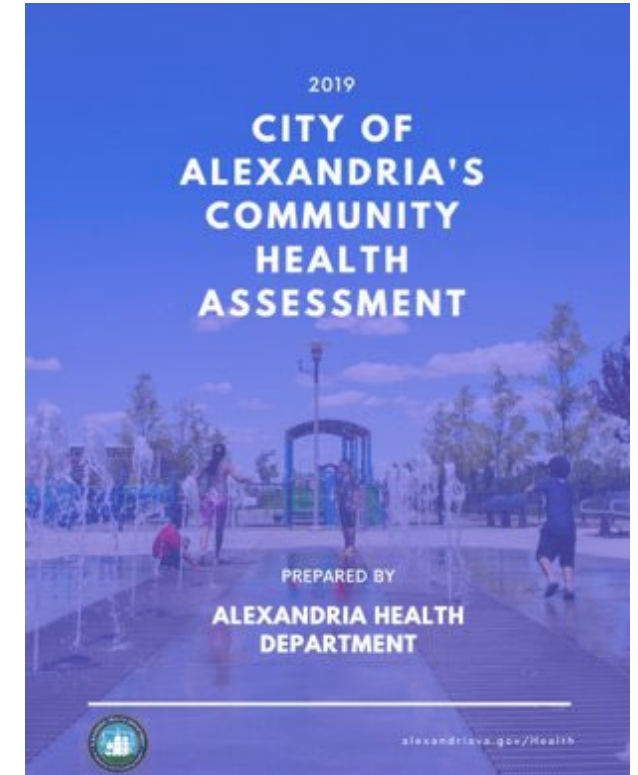


# Community Health Assessment (CHA) Overview

- A comprehensive review of the state of health in our city
- Identifies community strengths, shortfalls, and opportunities for growth
- Measures both quantitative and qualitative data
- Final product identifies top health issues in the city
- Leads us to the CHIP!

# Previous CHA

- Spring 2018 – Summer 2019
- Process:
  - Significant community engagement (survey, meetings, photovoice, story collection)
  - Data analysis
  - Alignment with other assessments (locally and regionally)
- What it Lead to:
  - A better understanding of health equity in our community
  - Actionable plan (CHIP) to improve community-selected health factors of poverty, mental health, and housing
  - Real programs/policies that improve health (healthy homes, out of school activities, free transit)



# CHA Steps

1. Identify Topics to Assess
2. Develop Methods and Identify Other Assessments
3. Implement Assessments
  - Qualitative – surveys, community conversations, larger meetings, walk and talks, PhotoVoice
  - Quantitative – core indicators, disparities in data
4. Analyze and Review Findings
5. Generate Report

# Timeline

Step	2024								2025						
	May	Jun	Jul	Aug	Sep	Oct	Nov	Dec	Jan	Feb	Mar	Apr	May	Jun	
Develop Assessment Methodology/Plan	Orange														
Community Survey*				Orange											
Data Indicator Analysis				Orange											
Walk and Talks*						Orange									
Photovoice*								Orange							
Community Conversations*								Orange							
Milestone Meetings* (tentative dates)							Yellow		Yellow		Yellow			Yellow	
Compiling Research Results									Blue						
Developing the Report										Blue					
CHA Release														Red	

Orange – Conducting Assessment  
 Blue – Analyze and Publish  
 Asterisk \* – Community input/qualitative data



September 2024



# Why Should I Participate?

- Input = Results!
- We need to learn from our community to have a full understanding of health
- Findings can inform work plans, focus areas, and initiative implementation

Participate



[Participate - Student Health and Wellbeing \(finders.edu.au\)](https://finders.edu.au)

# How Can Everyone Participate?

- Come to the Kickoff October 1st!
- Assessment activities – surveys, community conversations, walk and talks, PhotoVoice, etc.
- Sign-up for [CHA Mailing List](#)
- Share information on the CHA with your community
- How can we best communicate with your networks?





# Contact Us

Sean Curry, MPH

Public Health Planner

[Sean.Curry@vdh.virginia.gov](mailto:Sean.Curry@vdh.virginia.gov)

Natalie Talis, MPH

Population Health Manager

[Natalie.Talis@vdh.virginia.gov](mailto:Natalie.Talis@vdh.virginia.gov)

