

# WARWICK VILLAGE ROAD MURAL DESIGNS



CHALK  
R!OT

A person is shown from the waist down, wearing a grey t-shirt and shorts, painting colorful stripes (yellow, blue, purple, green) on a sidewalk. They are holding a white marker. The background is a blurred outdoor setting with a grey mat and a yellow container.

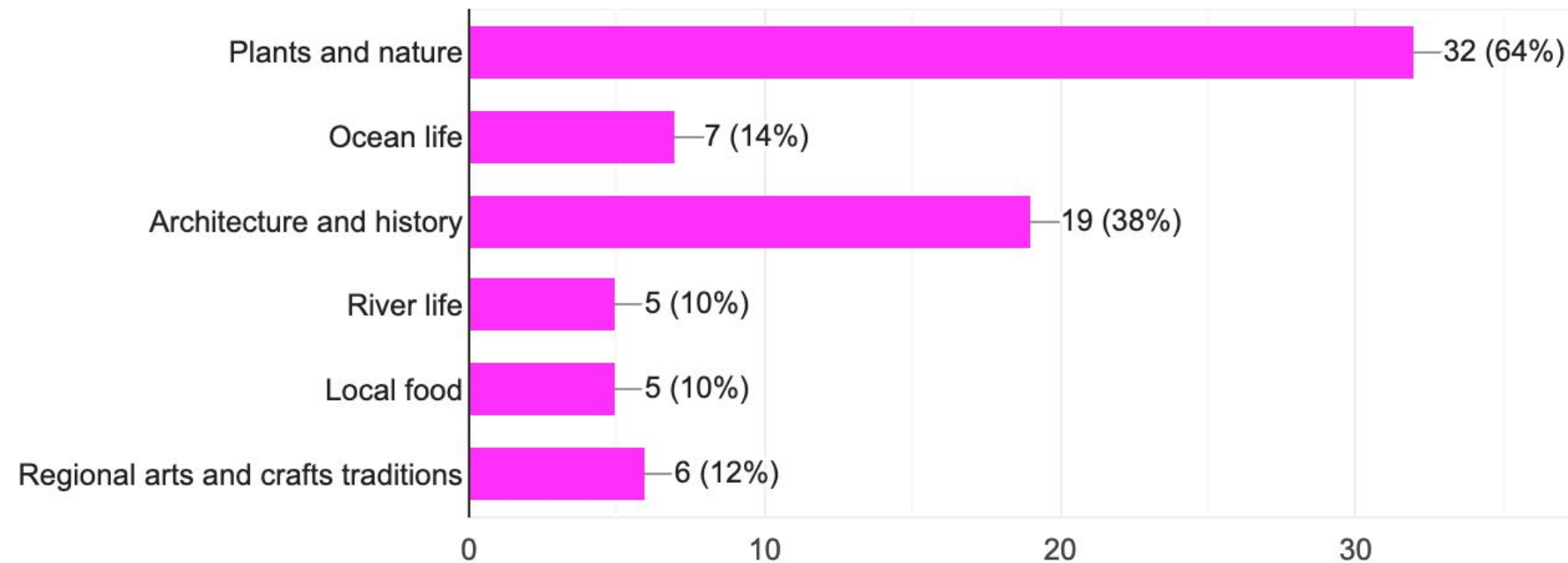
WE MEET AGAIN!

# SURVEY RESPONSES PRESENT CLEAR PREFERENCES!

- Our survey yielded 55 thorough and informative responses
- Thank you to members of this Task Force for helping distribute the survey form
- Our Chalk Riot team definitely feels we have clear direction for design thanks to everyone who participated in the survey
- Over 90% of participants live in Warwick Village

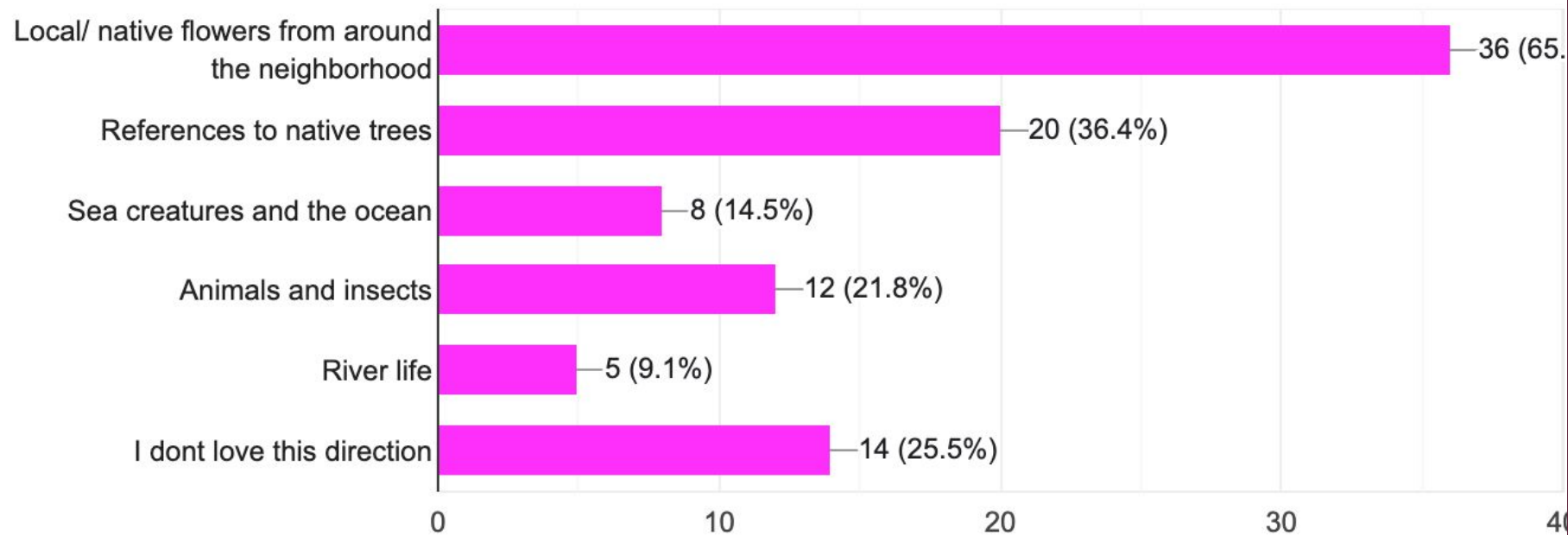
In general, which of the following elements would you be MOST exciting to include in the mural? Please select one

50 responses



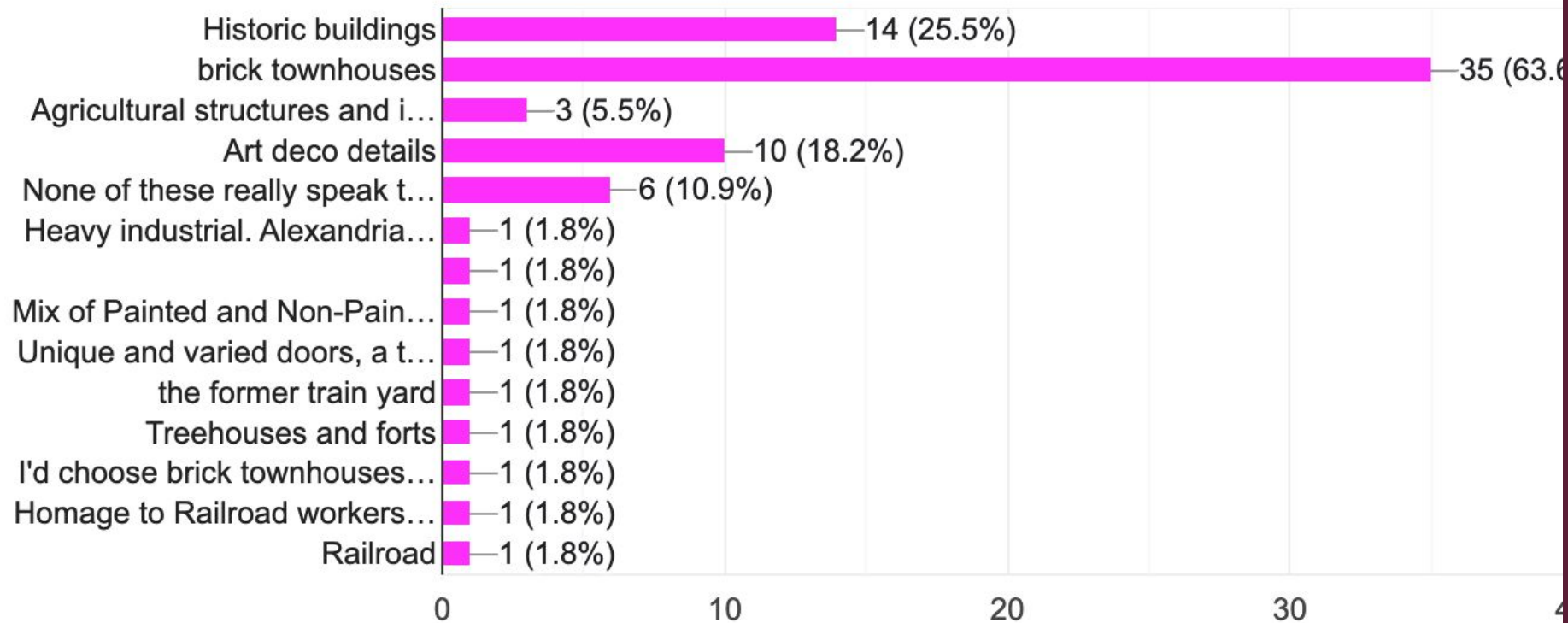
## What kind of natural elements would you like to see included in the mural?

55 responses



## What kinds of industrial/ architectural elements most represent the area to you?

55 responses

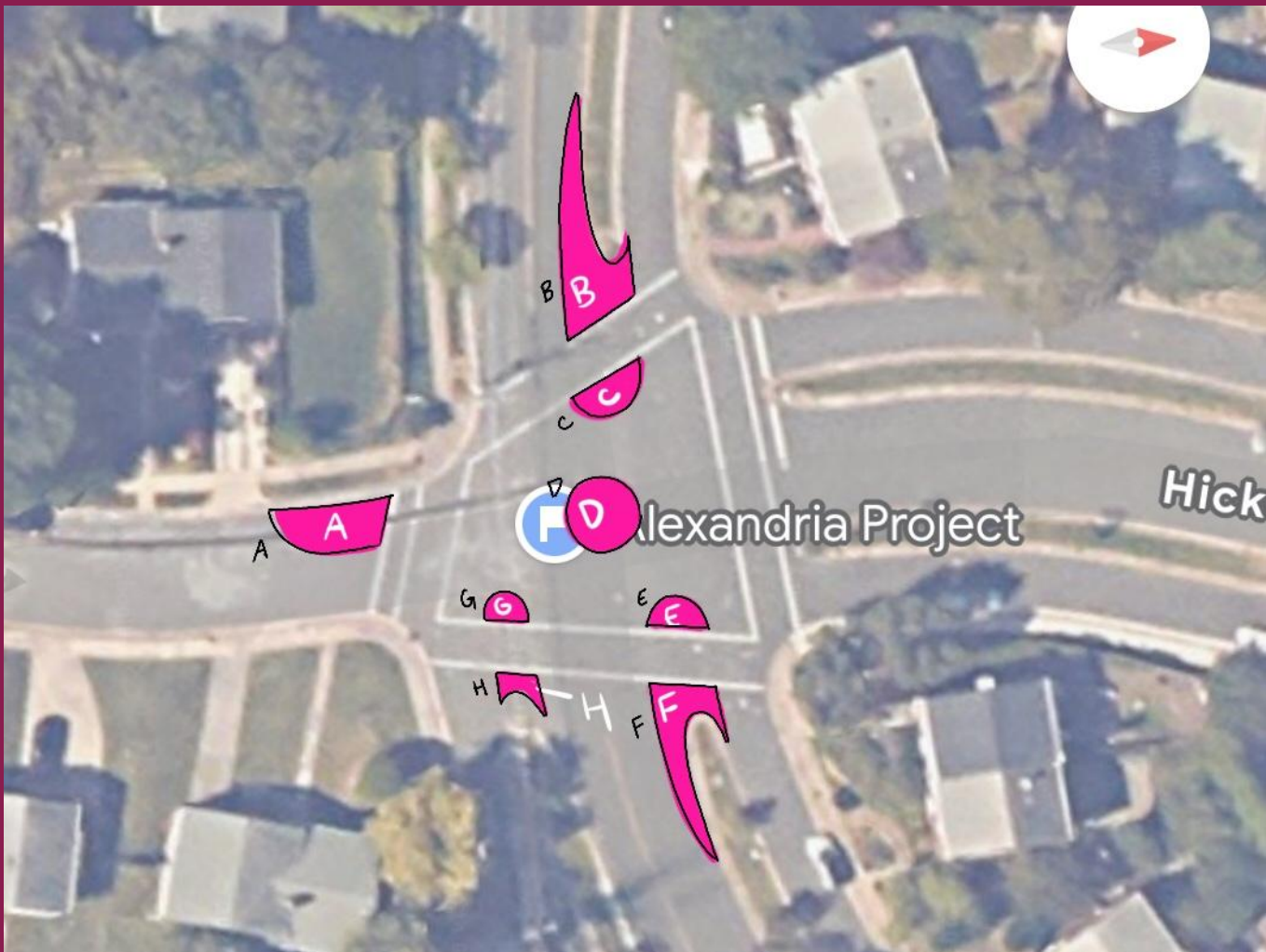


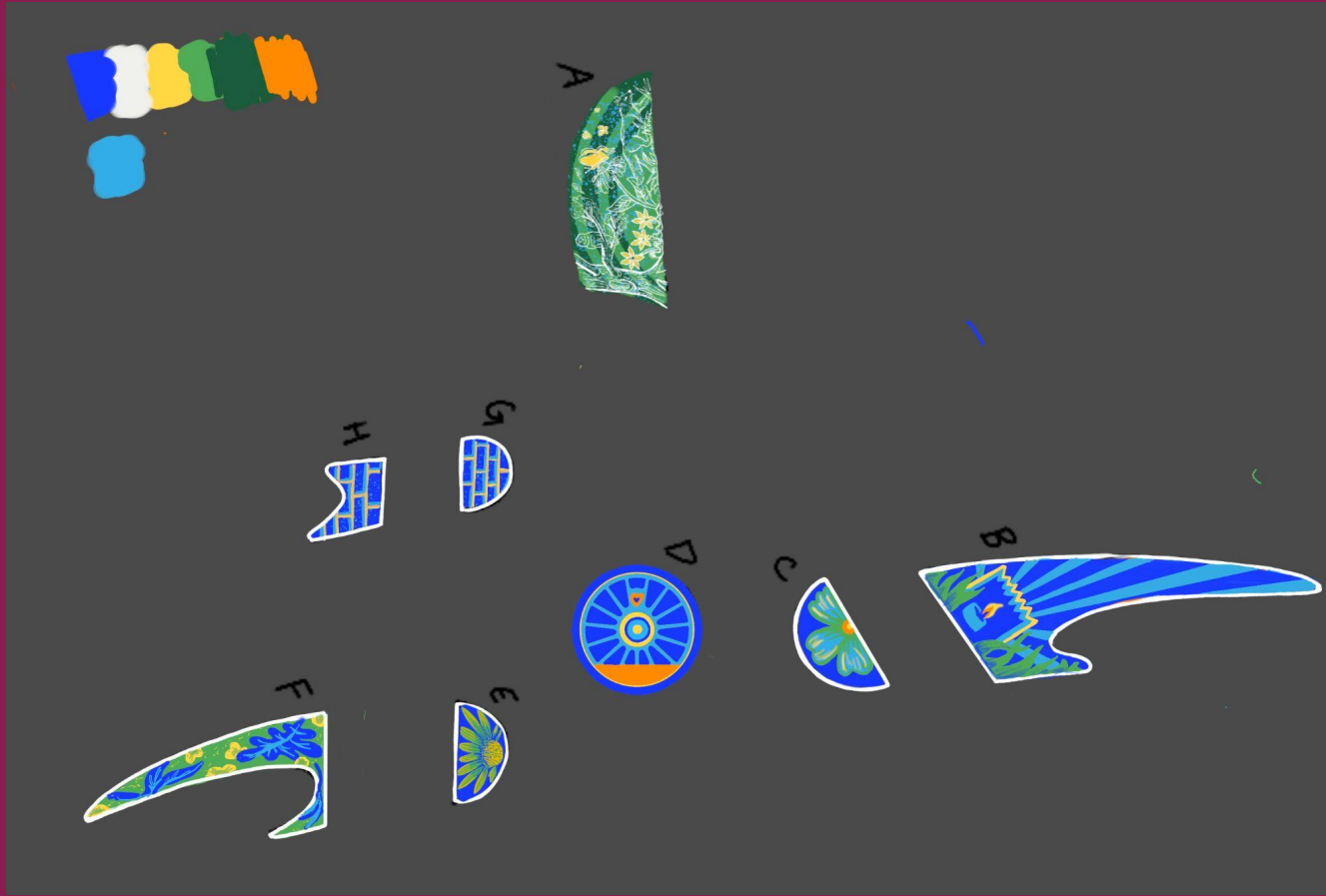
## Based on the multiple choice questions, we should create a mural that...

- Honors the natural wildlife and flora/fauna of the immediate area
- Reflects the iconic brick townhouses
- Nods to history if possible

**The long form questions contained additional information for our design!**  
**There were enough mentions of the following items that make them worth incorporating/considering...**

- The annual Luminaria event
- The MVCS caboose / train / railroad imagery
- Animals and trains would excite the kiddos
- Abundance of public parks and pool





An overhead of each section. Please note that no one will actually see it from this aerial perspective, aside from curious birds!

The variety helps with visibility and awareness, especially when the mural is still fresh.



A mockup of the train wheel design in the middle of the roundabout.

Design is taken directly from historic train car of the immediate area, rooting the project in history while making progressive transportation measures.





Section B's design is directly informed by the popular and culturally significant annual "luminaria" event.

The rays are intentional for high contrast visibility.



These sections are informed by native plants, trees and flowers.



*An example of this painting technique we have developed specifically for Streetbond.*



Due to the nature of placement of this section, we can get more detailed, and we designed this with the school-goers in mind. Abundant with native flowers, the mysterious Warwick Village fox, butterflies, and a giant tree. The owl represents the diligent awareness we are encouraging of all visitors to this intersection.