

Mobility and Safety

Did we consider existing and forecasted traffic in the Plan area?

As part of the planning process, KimleyHorn and Associates prepared a high-level traffic study to evaluate the impacts of the changing traffic demands on the surrounding transportation network with the Alexandria West Plan. Major study area corridors include N Beauregard Street, Seminary Road, Little River Turnpike, W Braddock Road, Sanger Avenue, and King Street. The traffic study analyzed the transportation network under the following land use scenarios:

- 2022 Existing Conditions
- 2045 Base Conditions - Based on forecasted volumes from the Metropolitan Washington Council of Government (MWCOG) travel demand models.
- 2045 Sensitivity Test - Considers a 30% growth in addition to the 2045 projected growth.

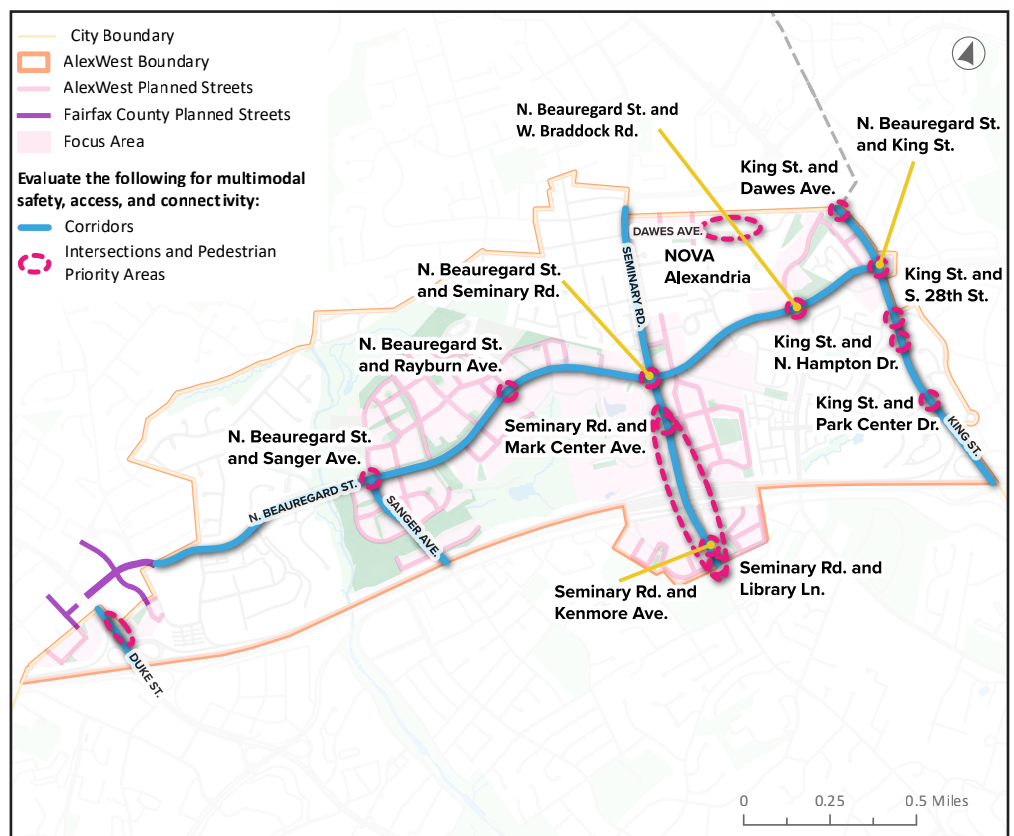
The study concludes that the transportation network can reasonably accommodate the currently forecasted growth, based on the 2045 MWCOG travel demand models and the 2045 sensitivity test. This study does not negate the requirement for site-specific transportation studies for individual development projects, as required by the City's Transportation Planning Administrative Guidelines.

How do we address concerns of safety in the Plan?

The Plan identifies specific areas that need to be studied further for safety. The City will work with property owners and other partners to study and address mobility-related issues at the intersections and along the corridors identified in the map to the right.

In addition, the City will explore options for improving safety and accessibility for all users on Seminary Road, generally from Mark Center Drive to Library Lane.

Safety Enhancements Study Areas Map

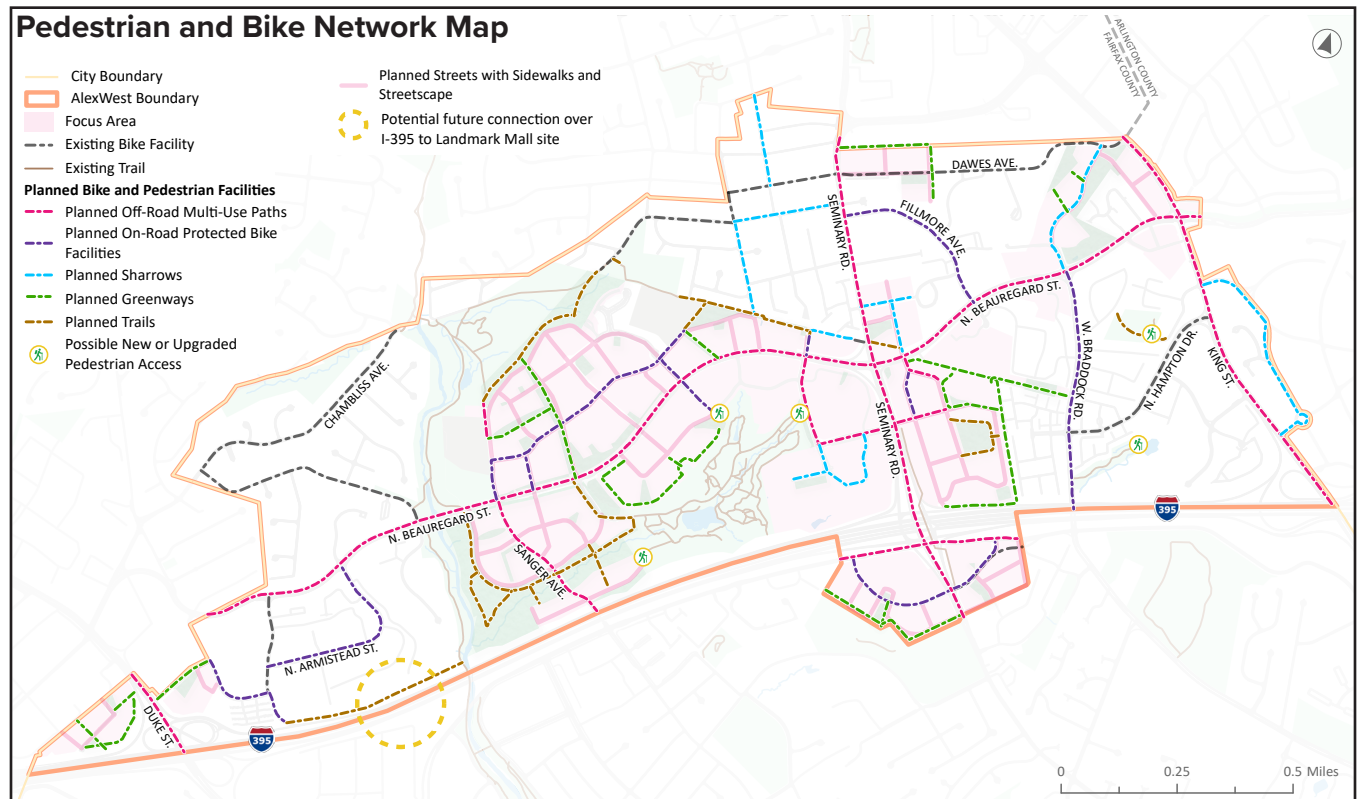


Mobility and Safety

How does the Plan propose to improve connectivity in AlexWest?

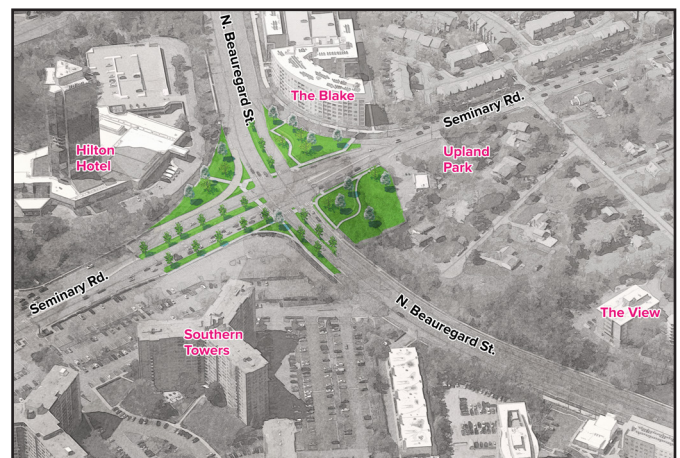
New streets and blocks will be provided as part of development and are intended to create a more reliable street grid, increasing options for pedestrians, bicyclists, and automobiles have to safely navigate AlexWest.

New and improved pedestrian connections will promote safe and comfortable travel by foot between and among neighborhoods and an expanded bike network will connect existing trails to each other, expand multi-use paths, trails, and greenways, add new bike facilities across the Plan area, and expand access to shared mobility options.



What are the plans for the intersection at Seminary and N. Beauregard St?

The Plan recommends a redesign of the intersection of N. Beauregard Street and Seminary Road that will better accommodate all users, provide safety measures that increase the comfort and visibility of pedestrians and bicyclists, enhance the streetscape, and maintain ease of access for public transit and vehicles to pass through.



Mobility and Safety

What about the West End Transitway? How does it fit into the Plan?

The Plan builds on the ability of the future West End Transitway (WET) to integrate AlexWest into the fabric of the broader West End, the rest of Alexandria, and the region. It encourages retail near West End Transitway stops and supports appropriate density along the route. Additionally, the Plan includes street designs along N. Beauregard Street for bus transit only lanes. Finally, the Plan recommends a new enhanced transit facility within the Southern Towers neighborhood.

