

Existing Conditions

AlexWest Plan

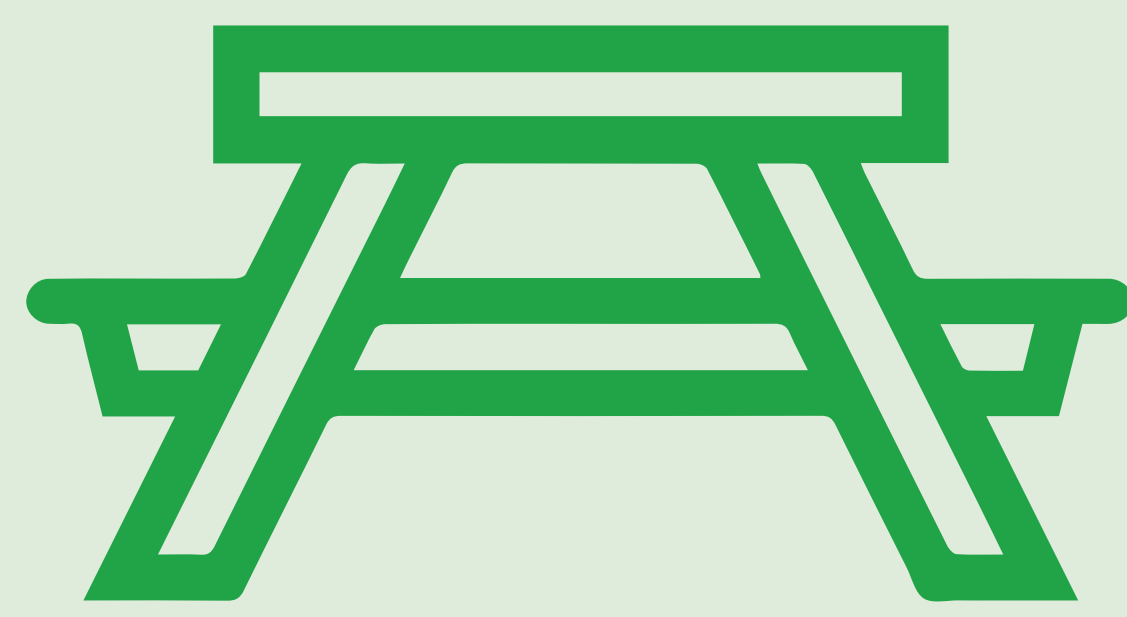
33%



Tree canopy coverage

40%

100+



Acres of parks and open space, including Dora Kelly and Winkler Preserve

TBD

0.5%



Buildings that meet the City's Green Building policy

100%

144



Acres of untreated parking lots

± 70

10.5



Acres that meet the City's stormwater runoff standards

± 80

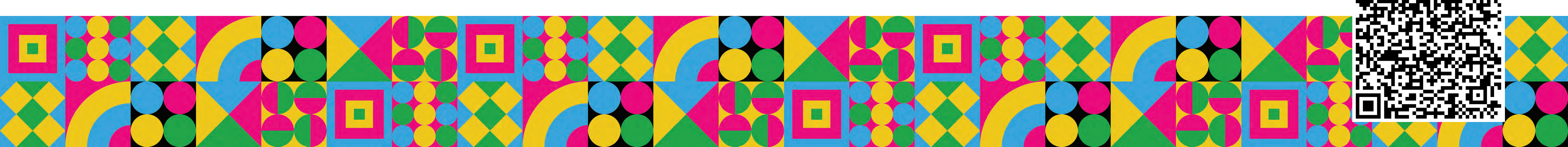
18%



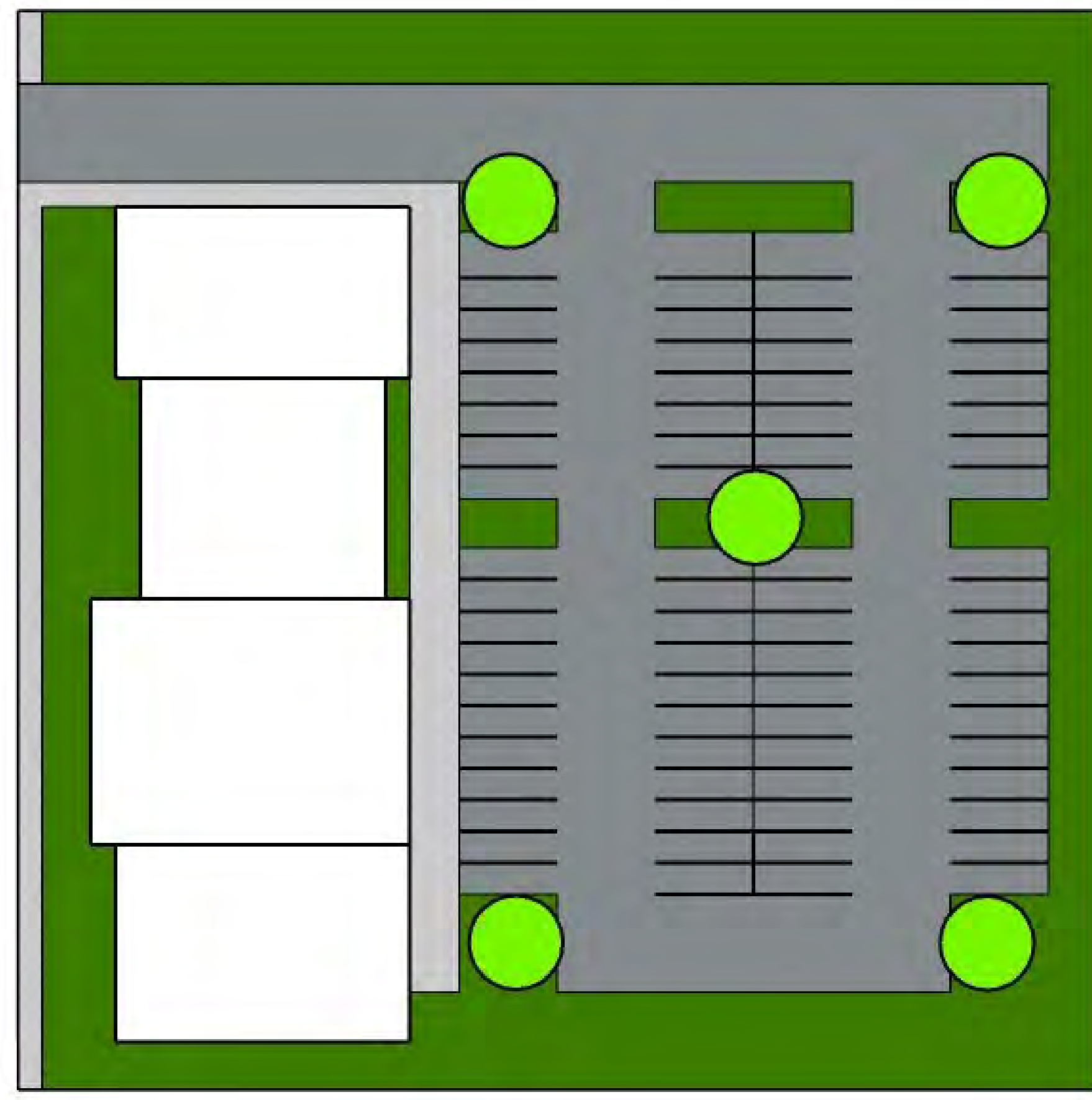
Commuter trips using transit, biking, and/or walking

50%

Draft Community Objectives



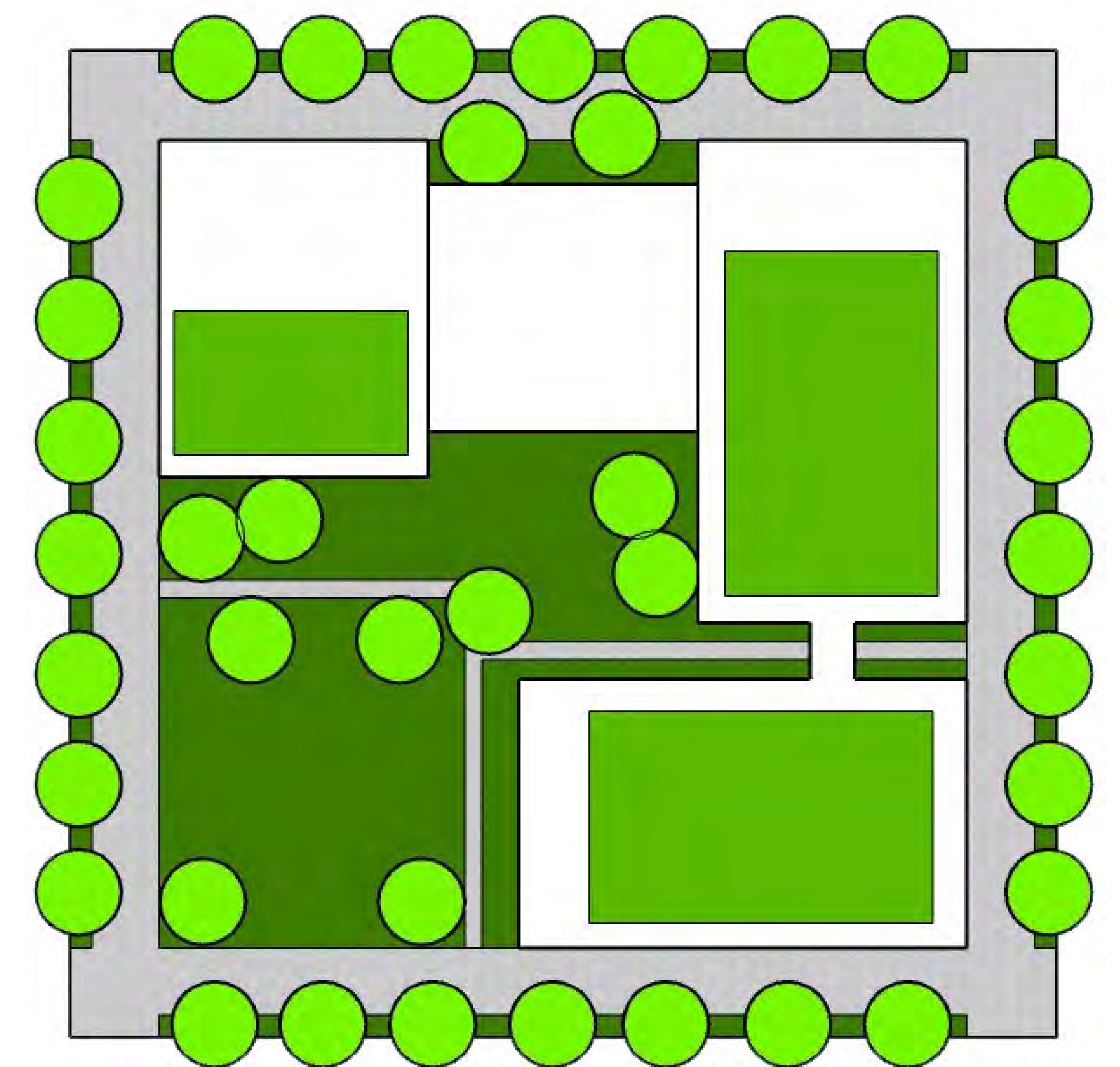
Sustainability



Existing

Example Site

Note: Site examples are for illustrative purposes only



With AlexWest Plan

How can we affect?

Impervious Surface

- Reduce impervious surfaces
- Encourage pervious materials

Tree Canopy

- Require minimum tree canopy percentage
- Minimize loss of existing trees

Green Building

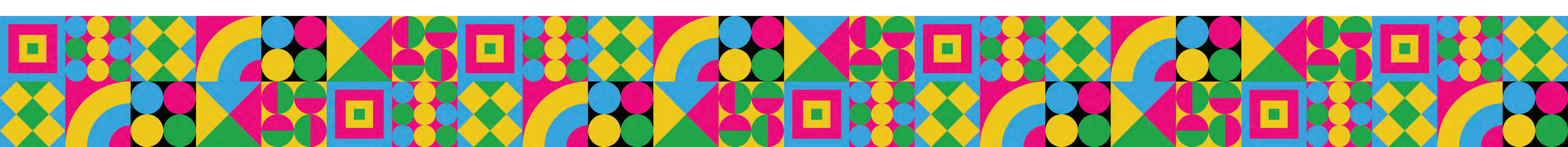
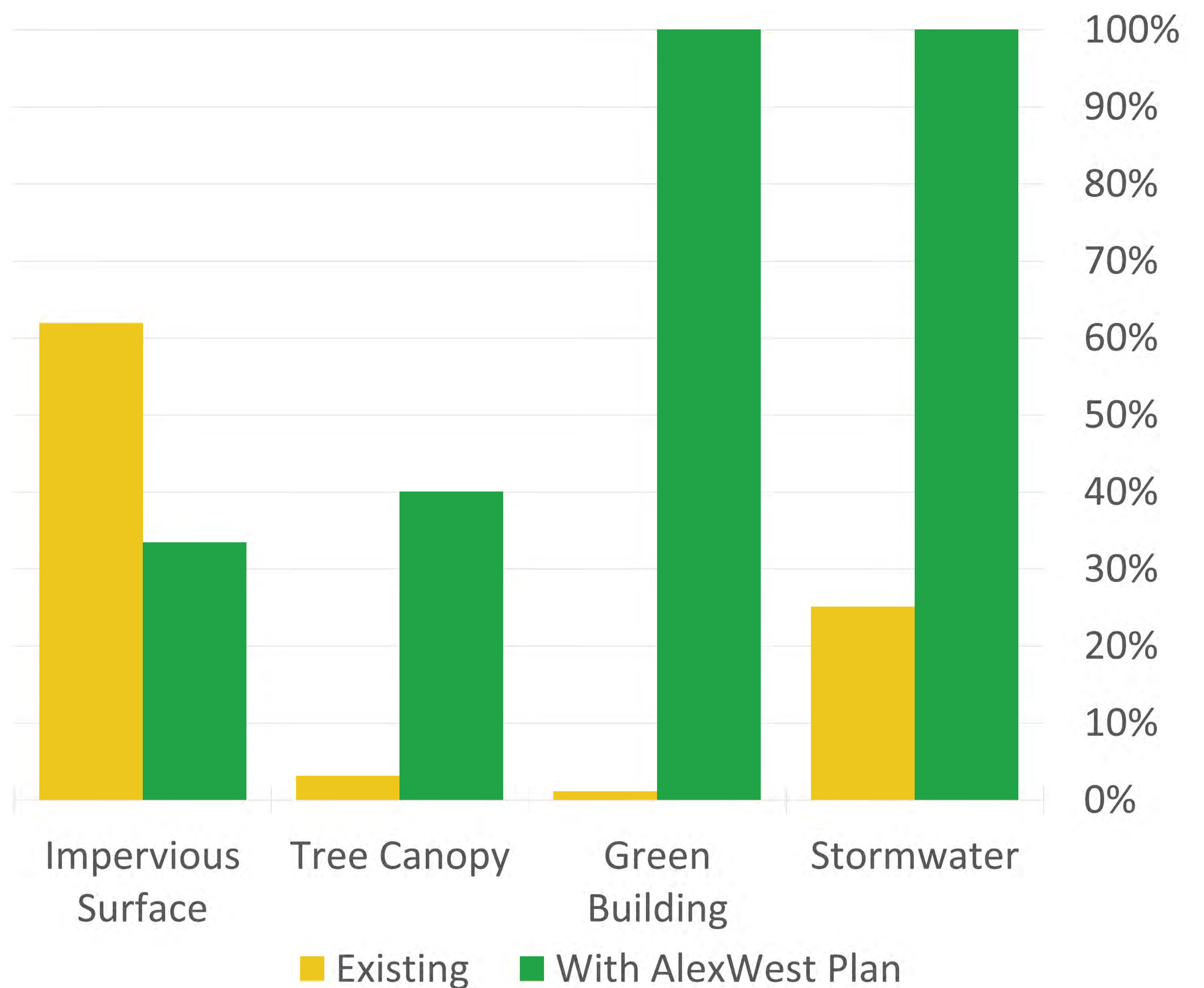
- Maximize Energy efficiency
- Require building consistent with Green Building policy

Stormwater Management

- Treat stormwater onsite
- Improve water quality
- Slow stormwater runoff

Mobility

- Maximize use of transit
- Safe streets
- Bike facilities
- Safety



Share your thoughts on Sustainability! AlexWEST

Place a dot next to 3 of the changes listed below you are most interested in seeing more of in your neighborhood:



Healthier, Fresh Food Choices



More Tree Canopy and Shade



Less Paved Surfaces



More Parks and Green Roofs



Less Need to Drive



Less Flooding through Better Water Management



More Green Energy Buildings

Mark all of the following sustainability-related challenges you have recently experienced:

Can't Reach/
Afford Fresh Foods

Staying Inside
to Avoid Hot
Temperatures

Seeing Trash in
Nearby Streams or
Parks

Difficulty Traveling
Without a Car

Dealing with Home
or Street Flooding

Having High
Energy Bills

Please use sticky notes to share any additional thoughts you have about Sustainability in AlexWest:

