



Public Hearing  
Armistead L. Boothe Park  
Citywide Parks Improvement Plan  
Amendment  
Recreation, Parks and Cultural Activities

Park & Recreation Commission Meeting  
June 15, 2023



# Park and Recreation Commission Action Items

1. Receive the staff recommendation for the Armistead L. Boothe Park Citywide Parks Improvement Plan Amendment
2. Hold the proposed Public Hearing on Thursday, June 15, 2023, and approve the staff recommendation

# 2014 Citywide Parks Improvement Plan

## KEYED LEGEND

1. IMPROVE CONNECTIONS TO HOLMES RUN TRAILS
2. RESERVE SPACE TO ADDRESS LONG-RANGE NEED FOR COMMUNITY CENTER
3. RENOVATE OPEN PASSIVE USE AREA
4. INCREASE BICYCLE PARKING
5. RETROFIT CAMERON STATION POND
6. OPEN VIEWSHEDS
7. RELOCATE MAINTENANCE BUILDING AND PROVIDE VEHICULAR ACCESS BRIDGE
8. ADD TRAIL IMPROVEMENTS AND SHADE STRUCTURES
9. STUDY FEASIBILITY OF BIKE-FRIENDLY PATH
10. CONSOLIDATE FIVE SMALL PLAYGROUNDS INTO TWO LARGE PLAYGROUNDS
11. PROVIDE PEDESTRIAN BRIDGE ACROSS TRACKS TO EISENHOWER AVENUE
12. HOLD LOCATION FOR POSSIBLE FUTURE SCHOOL GARDEN
13. PROVIDE DOG PARK LIGHTING (PUSH-BUTTON ACTIVATED, TIMED) AND EXPAND DOG PARK TO INCLUDE DOG EXERCISE FEATURES
14. LIGHT BRIDGE EXIT (MOTION-SENSOR ACTIVATED, TIMED)
15. RENOVATE COURTS TO INCLUDE MULTI-USE SPACES
16. INSTALL NATURAL PLAY FEATURES TO CREATE PICNIC ACTIVITY CENTER
17. PLANT TREES TO CLOSE GAP LEADING TO RAIL TRACKS



## GRAPHIC KEY





# Proposed Amendment

Adjust the location of the potential school community garden located in Armistead L. Boothe Park, identified as Recommendation 12 in the 2014 Citywide Parks Improvement Plan for Ben Brenman Park, Armistead L. Boothe Park and Cameron Station Linear Park.

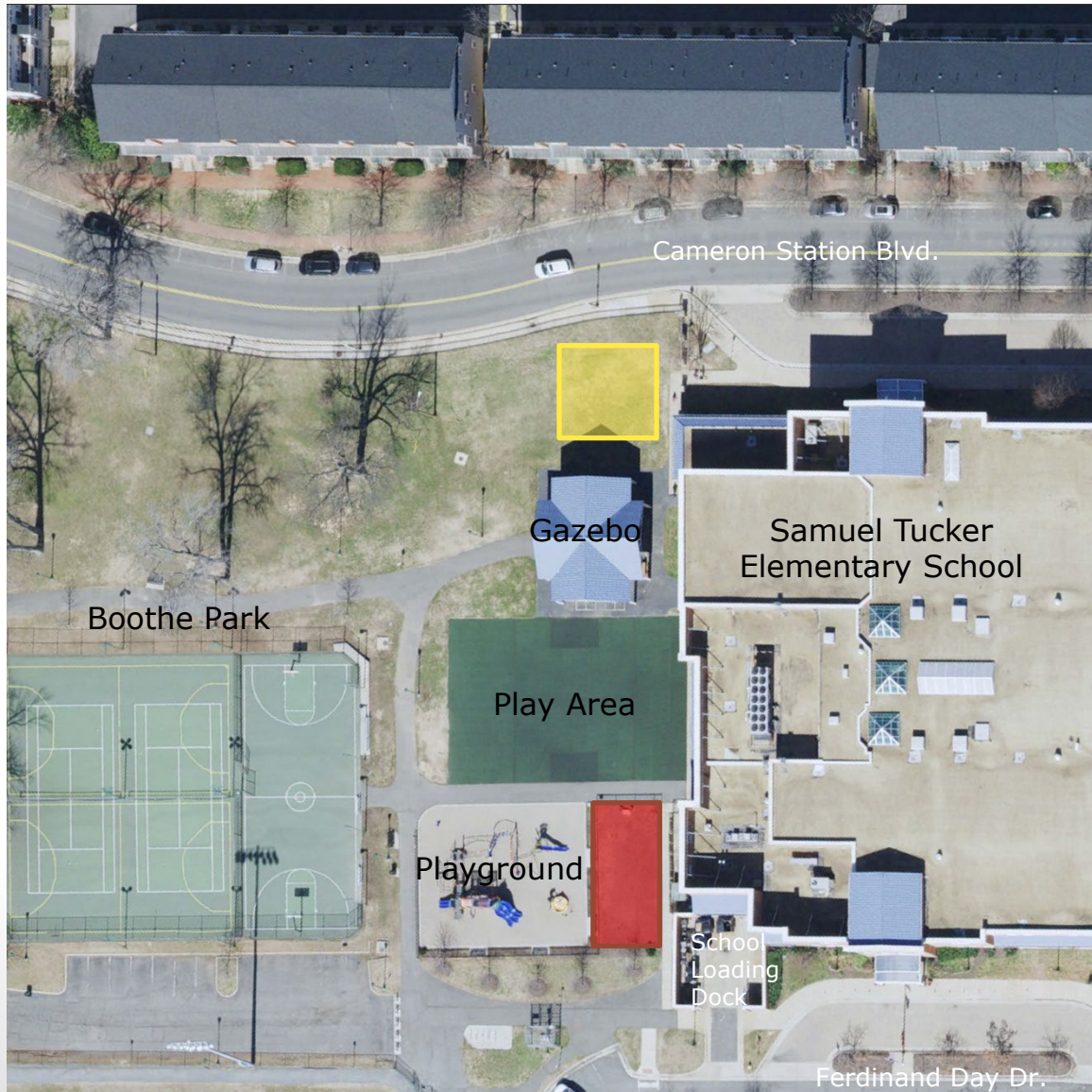




# Background

- Tucker Community Garden-- FY 2023 Community Matching Fund Awardee
- Location proposed by the community group will improve access to water and trash containers, and will activate an underutilized area adjacent to the school



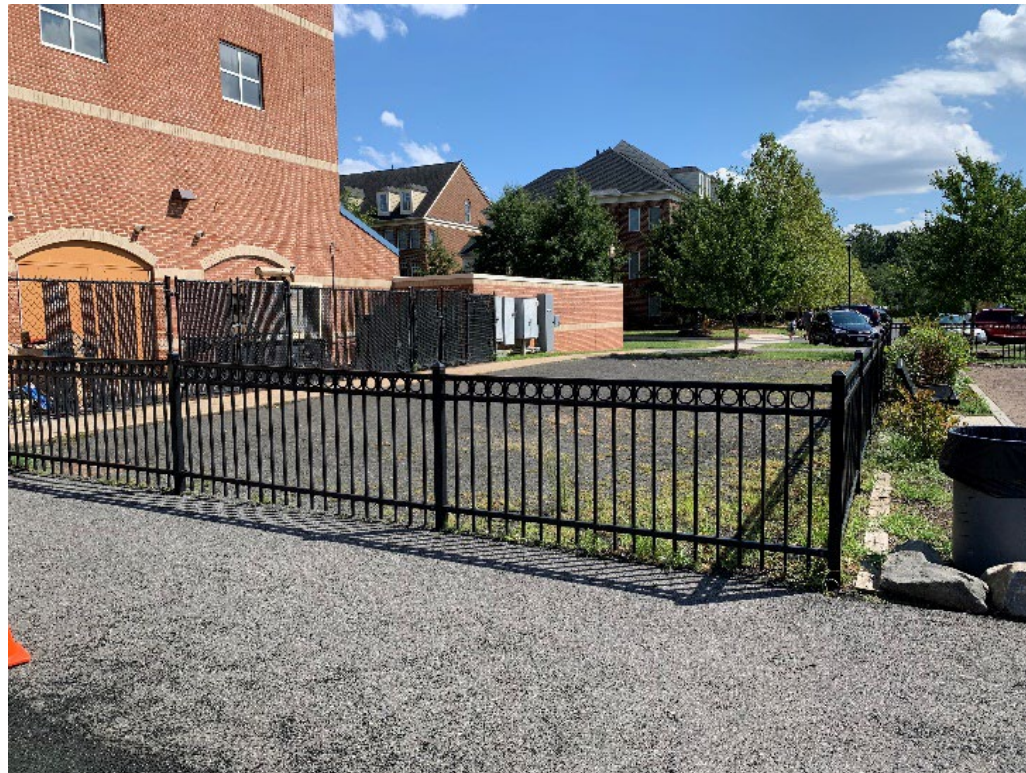
# Proposed Tucker Community Garden



-  2014 Citywide Parks Improvement Plan Recommendation #12
-  2023 Proposed Plan Amendment



# Proposed Tucker Community Garden

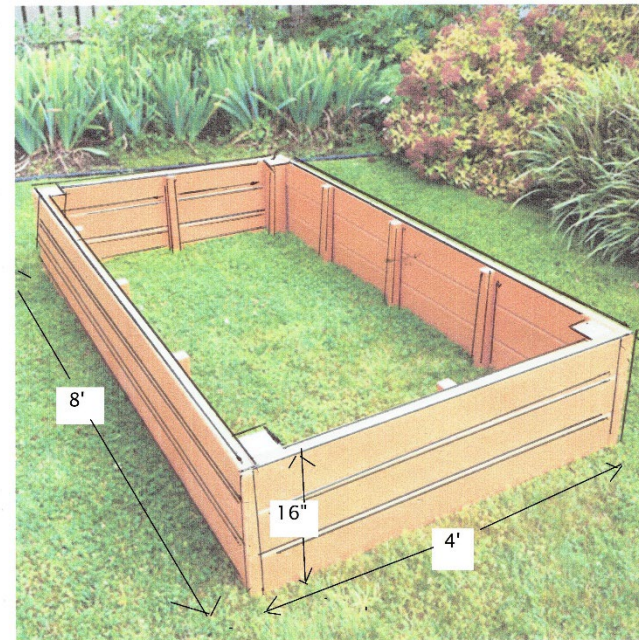




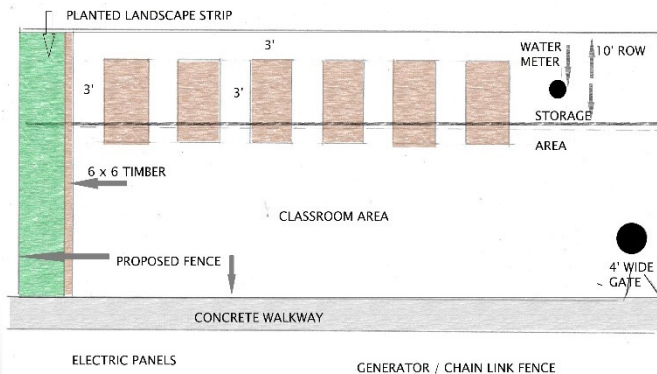
# Proposed Tucker Community Garden



South facing view of proposed garden



Raised Planter Box, 8' x 4' x 16"



Draft Planter Box Layout





# Staff Recommendation

Staff recommend approval to locate the Tucker Community Garden north of Ferdinand Day Dr., adjacent to the school-age playground and to amend Recommendation 12 of the 2014 Citywide Parks Improvement Plan for Ben Brenman Park, Armistead L. Boothe Park and Cameron Station Linear Park.



# **Discussion, Questions, and Commission Approval**