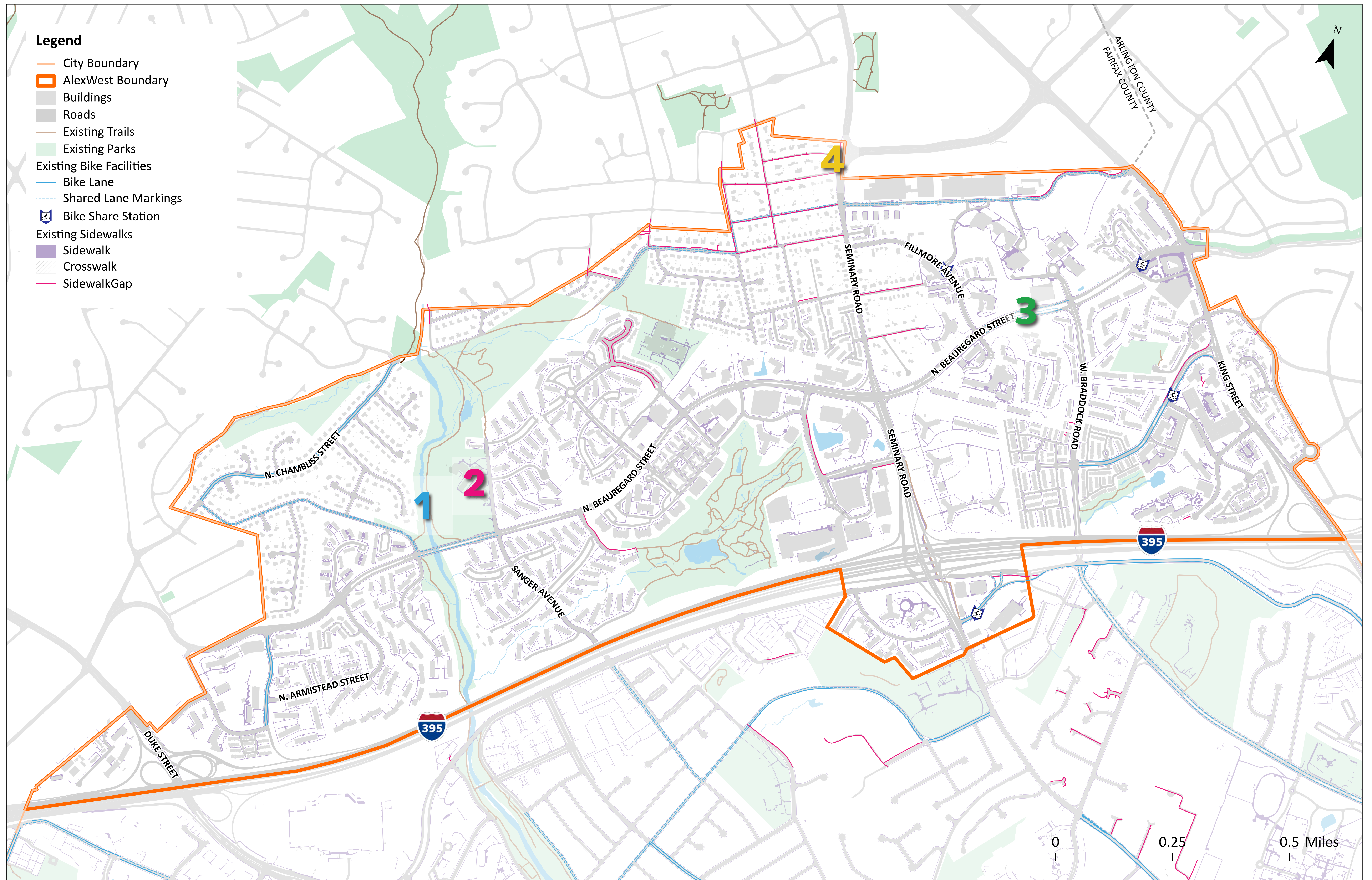


# Existing Bicycle and Pedestrian Network and Current Improvement Projects



## Current Bicycle and Pedestrian Improvement Projects



### 1. Holmes Run Trail Improvements

In 2018 and 2019 portions of Holmes Run Trail were damaged due to flooding and erosion, including two bridge structures. Since those events, a half-mile section of the trail has been closed. Efforts to repair the trail are moving forward.



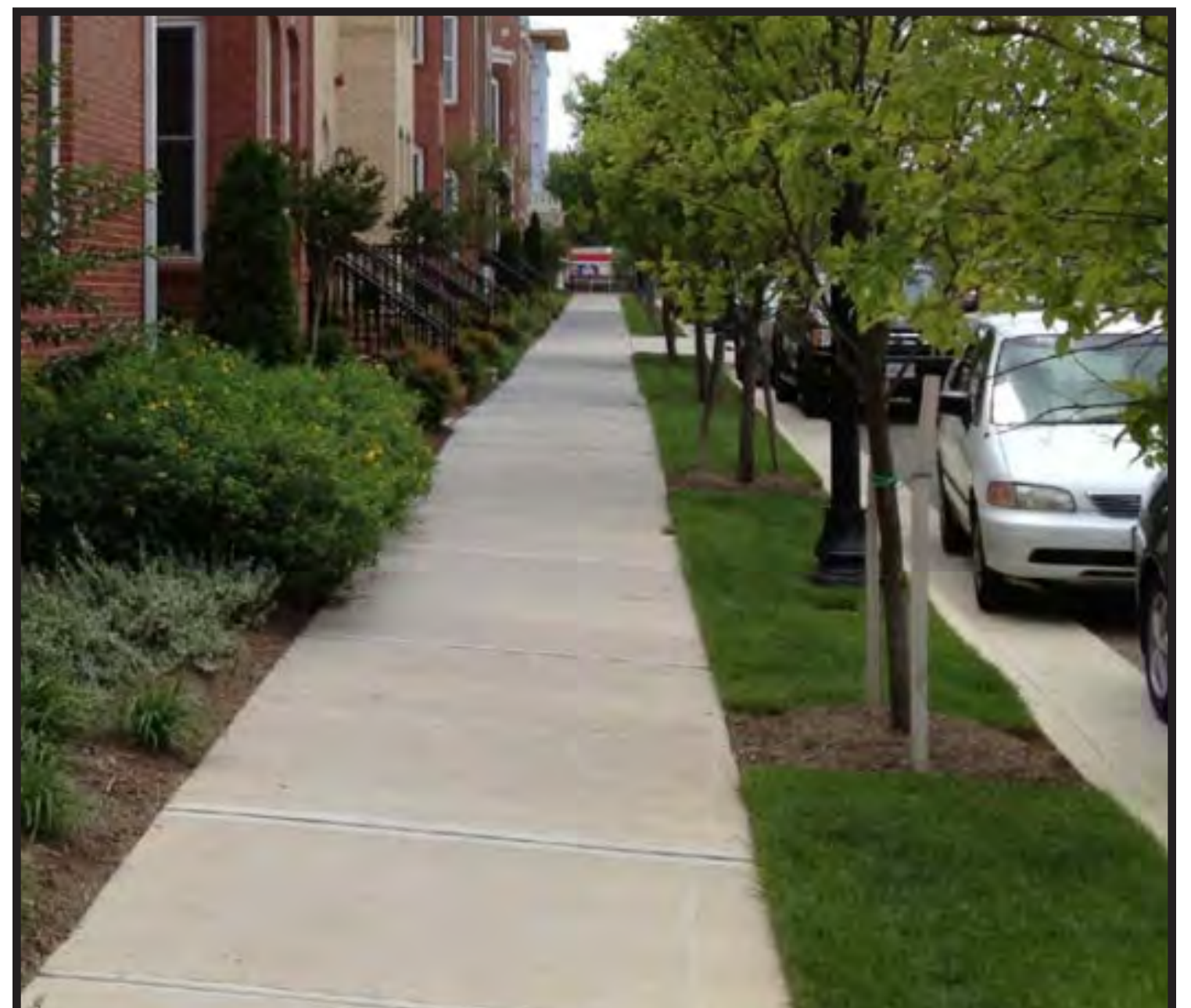
### 2. Williams Ramsay Safe Routes to School

A Safe Routes to School walk audit led to a number of recommendations for safer pedestrian conditions near William Ramsay Elementary School. This includes intersection upgrades like ADA-compliant curb ramps, high visibility school zone crossing signage, and traffic signal timing adjustments as well as school zone flashers.



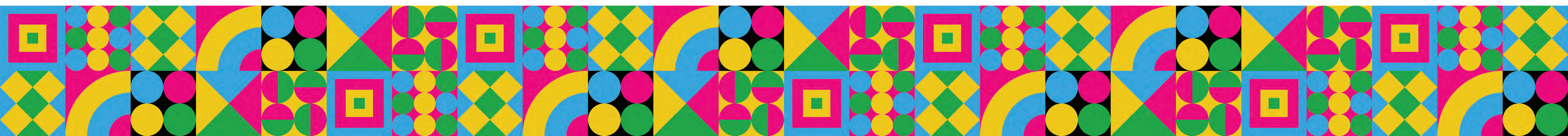
### 3. Beauregard Street Trail - Phase 1

The purpose of this project is to design and construct a shared-use path along North Beauregard Street between Fillmore Avenue and Berkeley Street, approximately 0.5 miles. This project will increase mobility and access for people walking, biking, or using other mobility devices on the West End. The project is currently in design.



### 4. Seminary Road/Colfax Avenue Sidewalk Connection

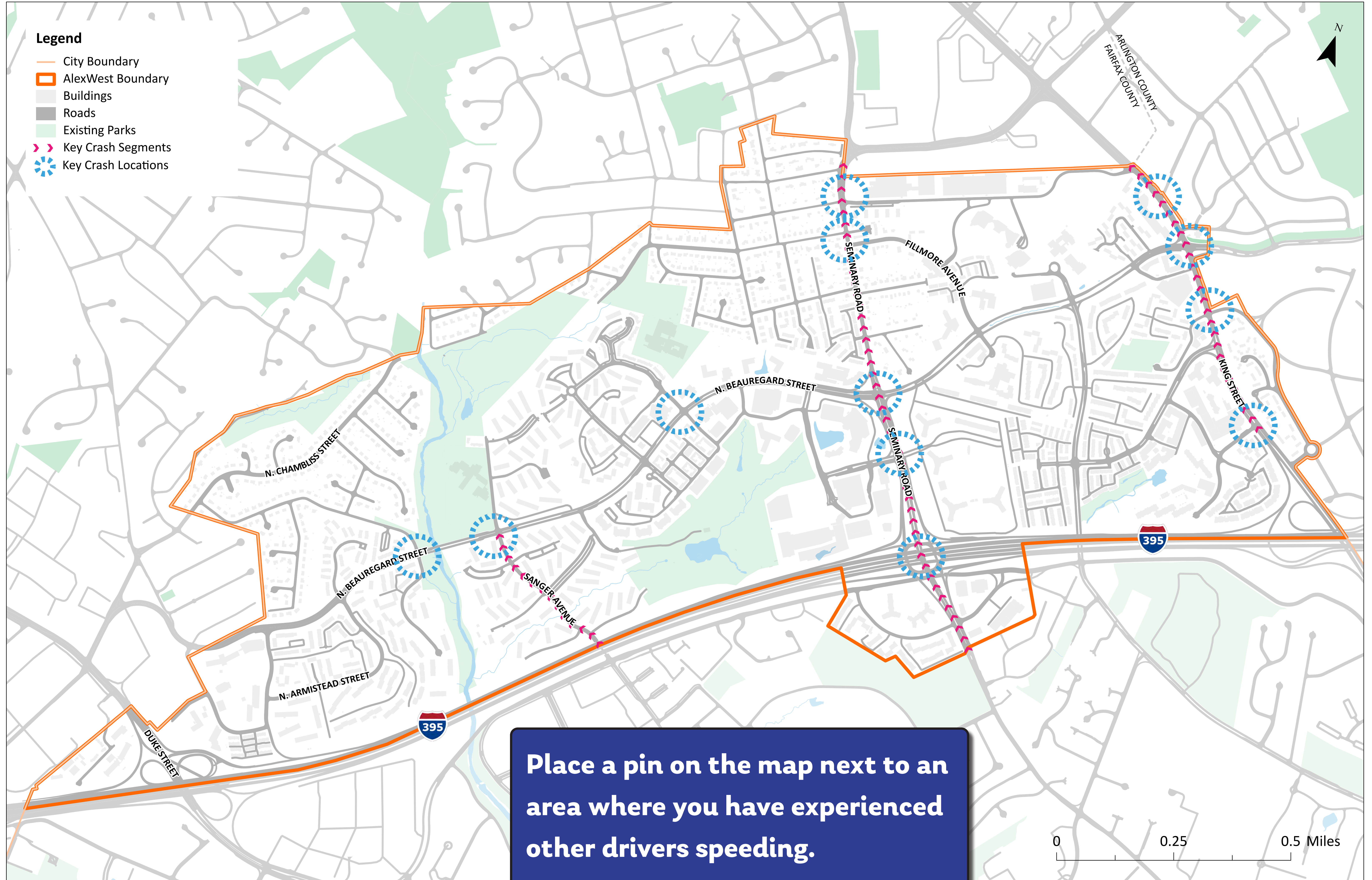
This improvement will go from the Fairfax County border to Colfax Street on Seminary Road. This project is anticipated to be complete in Fiscal Year 2024.





# Existing Street Network - Safety

Speeding and/or driving under poorly lighted conditions are causing the majority of the car crashes in the AlexWest Plan Area.



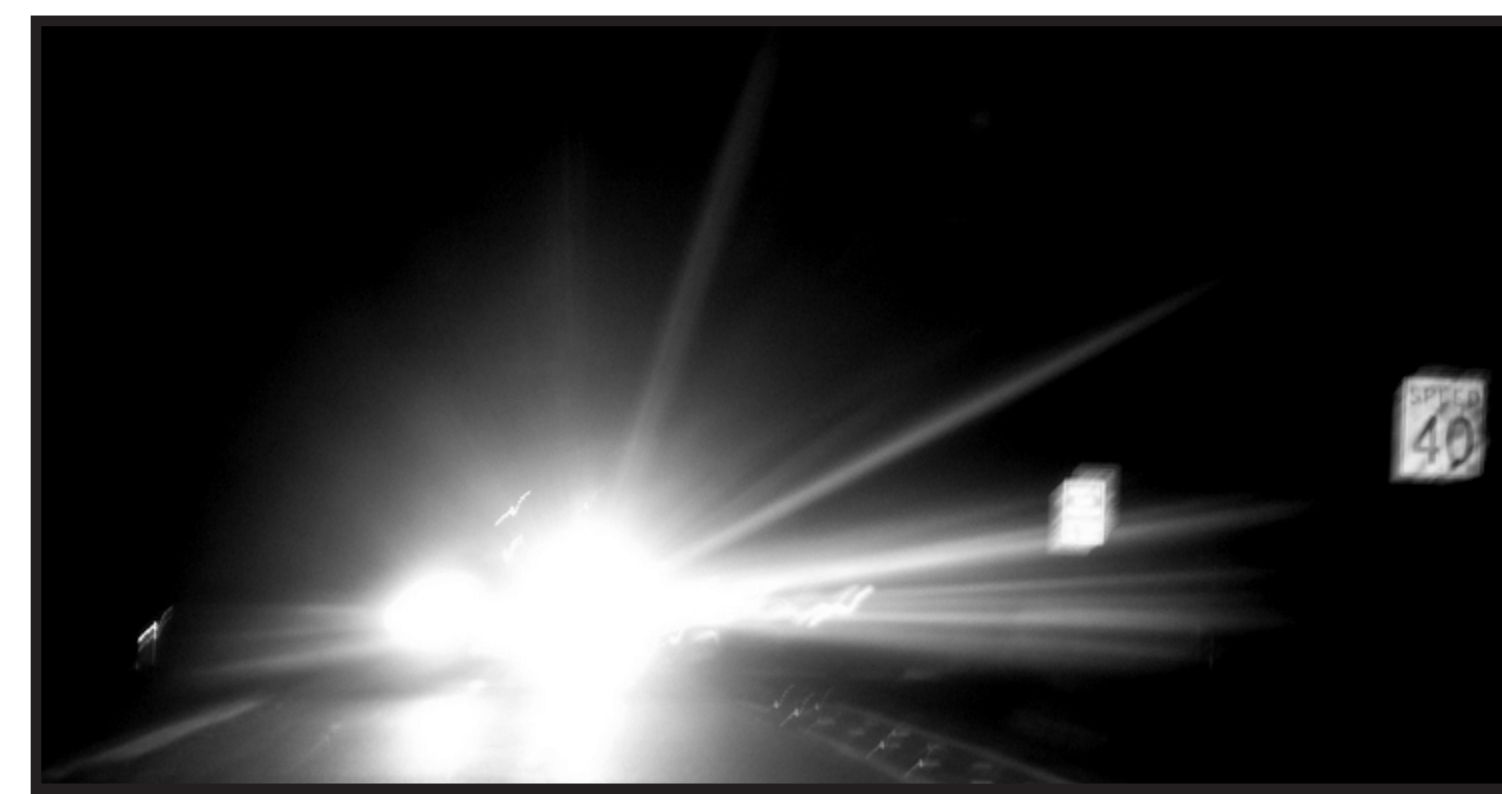
Place a dot next to any of the following issues you have experienced driving at night in AlexWest.



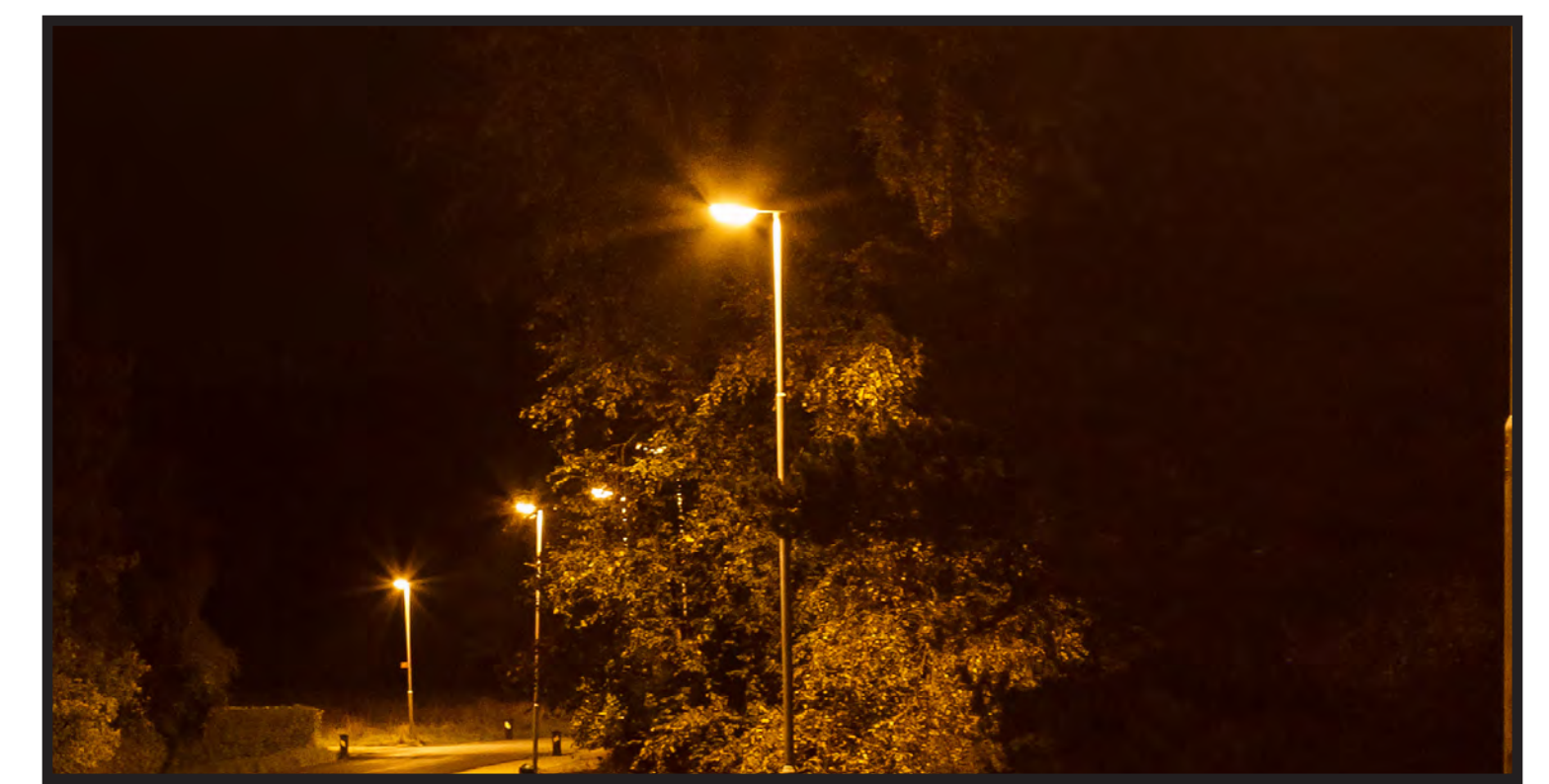
Cannot See Lane Markings



Cannot See Signage

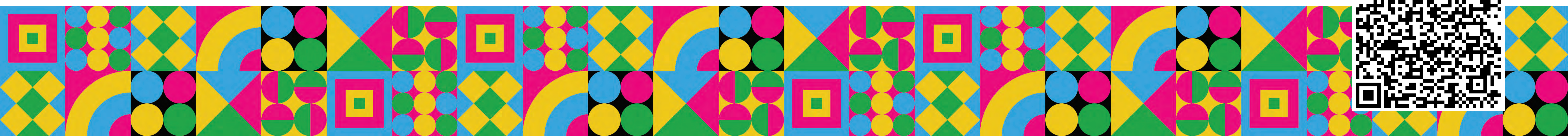


Oncoming Traffic Lights are Blinding



Road is Poorly Lit/Street Lights are Not Bright Enough

Draft Community Objectives



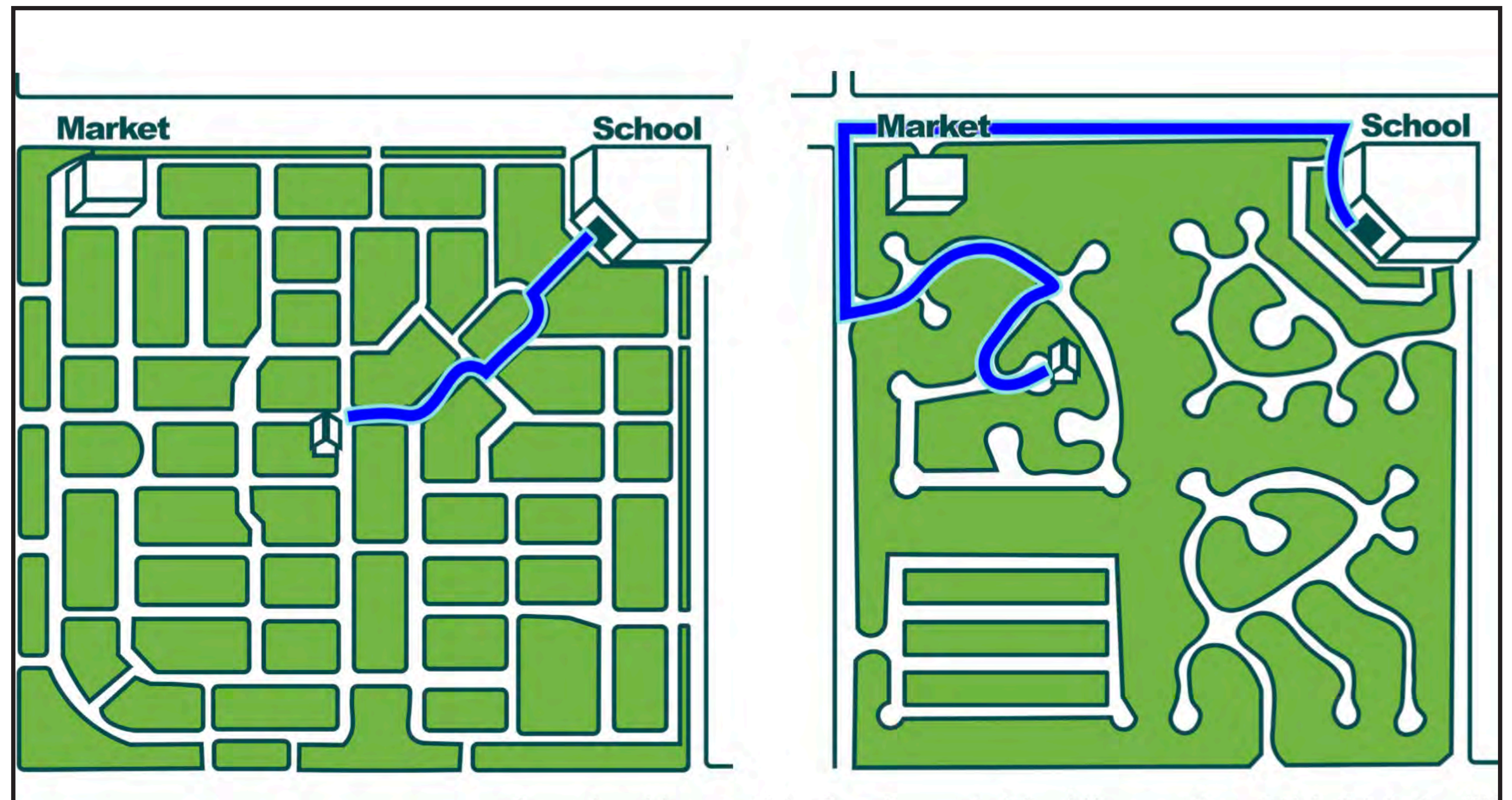


# Community Connectivity

Plan objective: Improve connectivity within the Plan area and to other destinations.

More and better connected streets mean more people walking and biking and allows residents to more efficiently travel from one place to another and provides more routes.

- 1 Street = 1 Route
- 5x5 Streets = 70 Routes
- 6x6 Streets = 252 Routes
- 7x7 Streets = 924 Routes
- 8x8 Streets = 3,432 Routes
- 9x9 Streets = 12,870 Routes



Source: CivicLex and Transportation and Growth Management Oregon Guide for Reducing Street Widths

## Forms of Connections

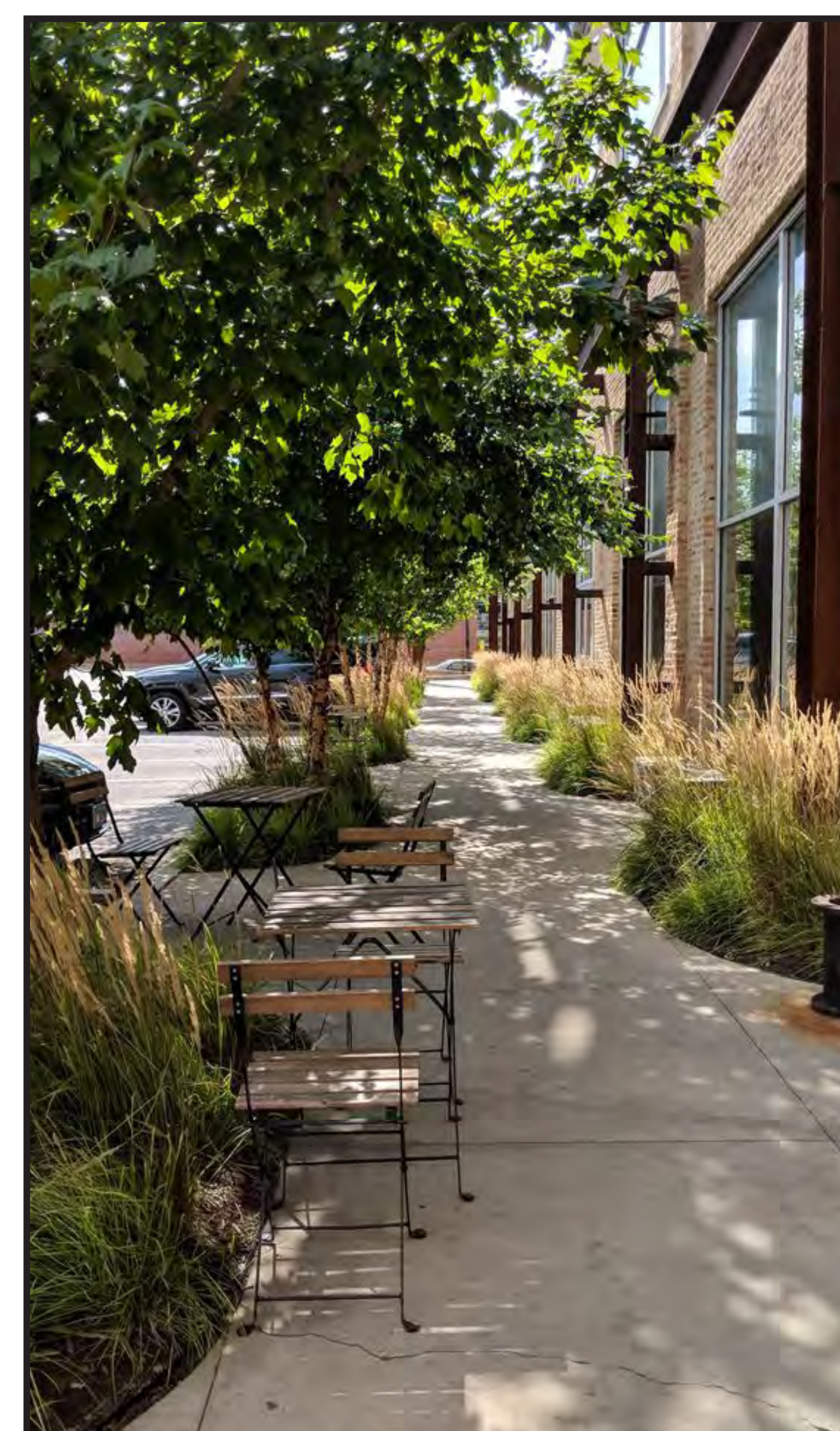
Streets should be designed for and operated to enable safe, efficient, and comfortable travel for all users.



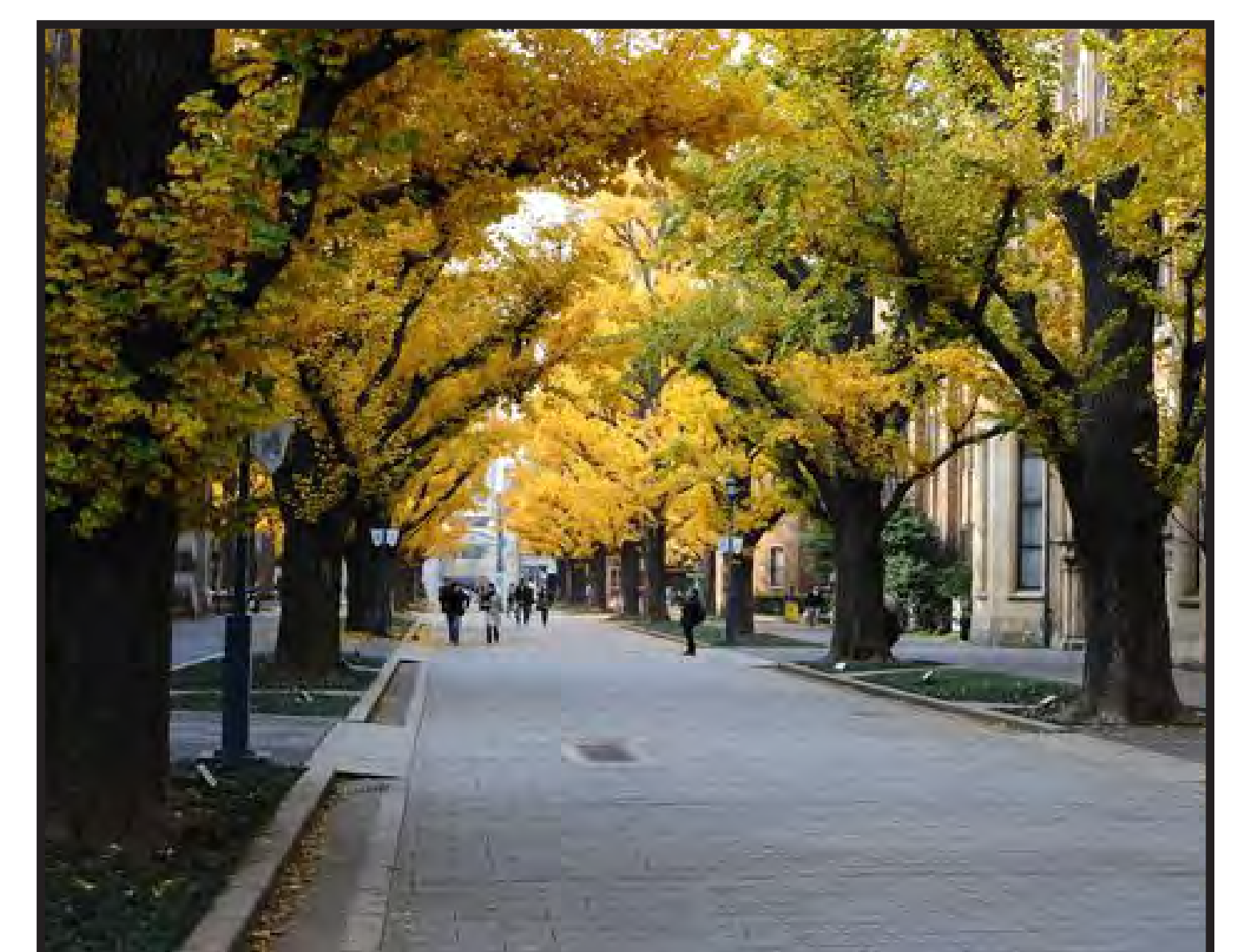
Plan Area Street



Neighborhood Street



Retail Street



Shared Street



Pedestrian Connection - Paseo

## Importance of the Public Realm

The area between the streets and buildings needs to provide a safe and inviting environment.



Setbacks and Landscaping



Scale and Context



Uses on Ground Floor



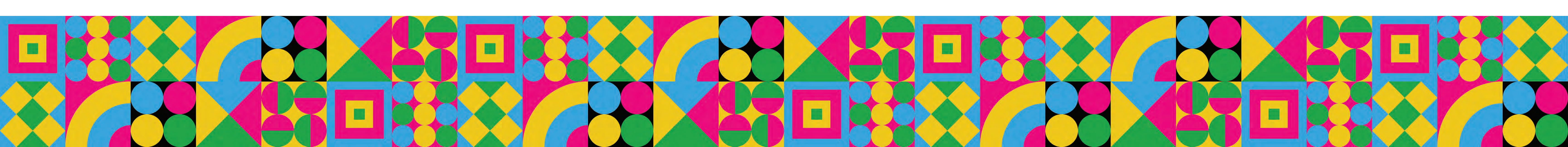
Amenities



Landscaping and Stormwater



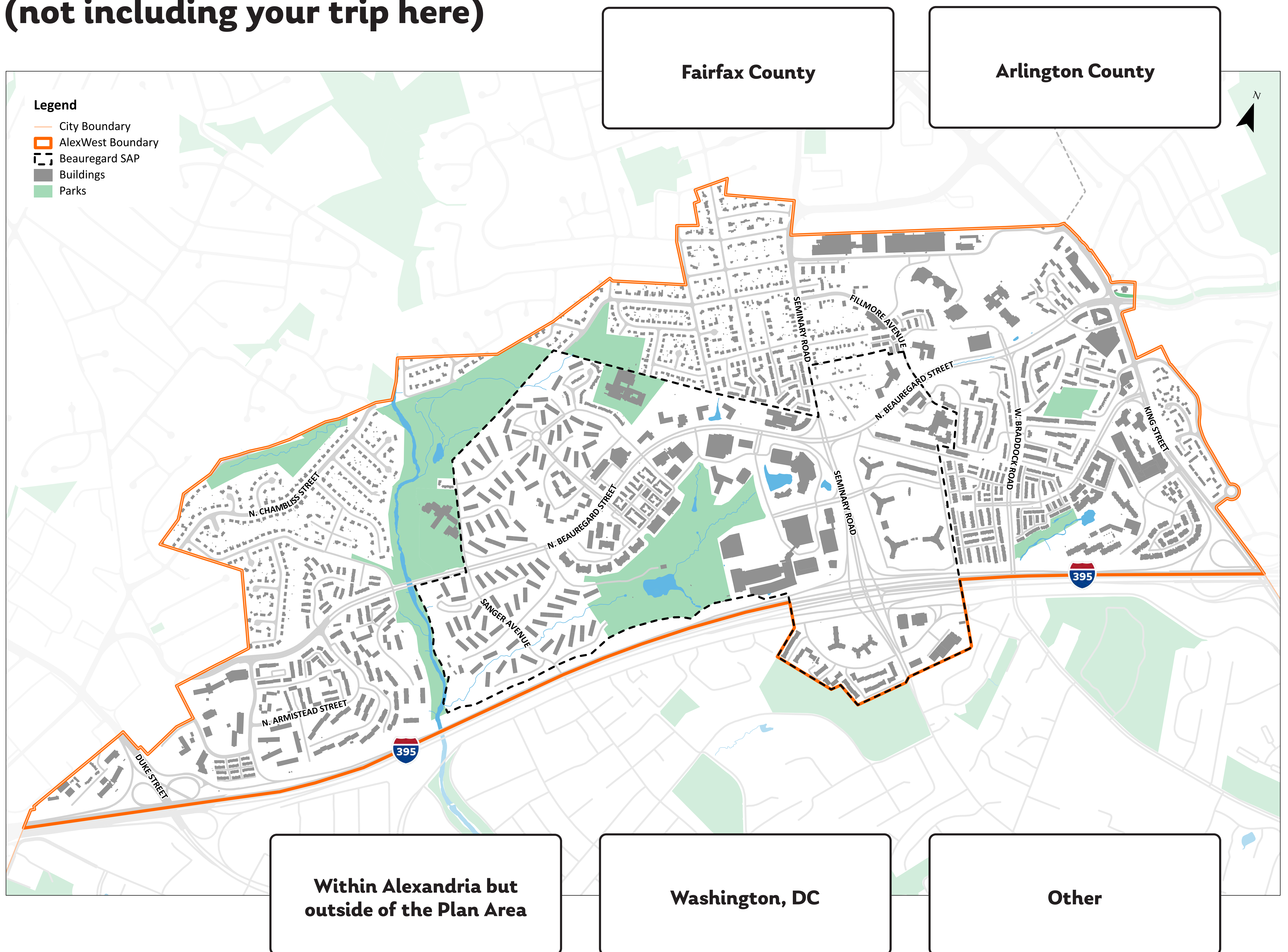
Bikes and Pedestrians





# Where do you go?

Use the yarn and the pins to mark the **beginning** and **end** of your most recent trip (not including your trip here)



For your most recent trip place a dot for which mode you traveled by and for which you would have preferred to travel by?

(Red = Car, Blue = Transit, Green = Bike, Yellow = Walk)

I traveled by...

My preferred mode of travel is...

