



# DUKE STREET *IN MOTION*

**Transitway Advisory  
Group Meeting #3**

June 30, 2022

[alexandriava.gov/DukeInMotion](http://alexandriava.gov/DukeInMotion)

\$87M in Northern Virginia Transportation Authority regional revenues are being utilized towards this Duke Street Transitway project.



# WELCOME

Yon Lambert

Director of the Department  
of Transportation and  
Environmental Services





# AGENDA

- Approval of Meeting #2 Minutes
- Overview of BRT
- Introduction and Review of 2012 Plan
- Discuss Advisory Group Schedule
- Public Comment
- Adjourn



# GOALS OF TONIGHT'S MEETING

- Provide Brief Overview of BRT
- Review and Assessment of The 2012 Transitway Concept Plan
- Discuss Advisory Group Schedule and Milestones Moving Forward

# VISION AND GUIDING PRINCIPLES

- **Convenient:** Make bus travel more predictable, frequent, and comfortable
- **Efficient:** Improve mobility for all Duke Street travelers
- **Equitable:** Use enhanced bus transit to support equitable access for a diversity of people and places
- **Safe:** Ensure safety and accessibility for those connecting to and riding the bus, as well as other travelers
- **Vibrant:** Create and enhance thriving and future corridor destinations that improve resident quality of life and boost the local economy
- **Sustainable:** Contribute positively to the environment, now and in the future

# OVERVIEW OF BRT

# WHAT IS BRT?

The quality and reliability of rail transit, with the design flexibility afforded by buses

- Speed
- Reliability
- Identity
- Improved Design





# BRT ELEMENTS - STATIONS

- Lighting, Safety, Security
- Shelter, Seating
- Passenger Information
- Level/Near Level Boarding
- Visual Appeal/Branding
- Fare Collection
- Wayfinding





# BRT ELEMENTS - VEHICLES

- Vehicle Size and Seating
- Door Configuration
- Passenger Amenities
- Accessibility
- Bicycle Accommodation
- Electric, Hybrid, Diesel, Compressed Natural Gas



EmX BRT left-door boarding, Eugene, OR



Articulated vehicle, Los Angeles, CA



Vehicle interior, © David Sailors, 2005



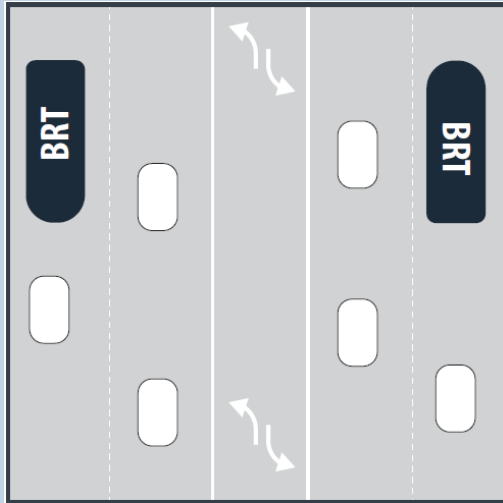
Vehicle interior, Seattle, WA

# BRT ELEMENTS – SUPPORTING INFRASTRUCTURE

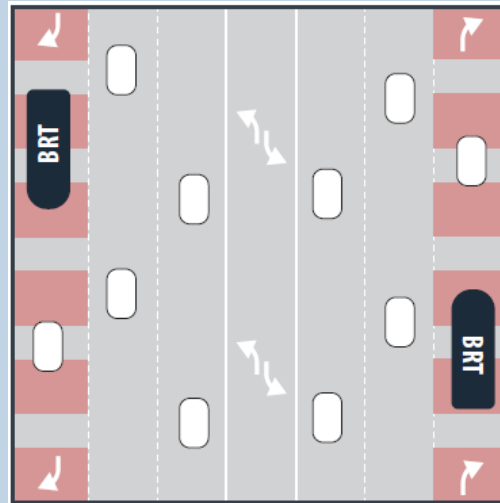
- Sidewalks, Multi-Use Paths, First Mile/Last Mile
- Crosswalks, Push Buttons, Ped Indications
- Stormwater Improvements
- Traffic Signal Timings, Transit Signal Priority
- Roadway Pavement
- Traffic Signage, Markings



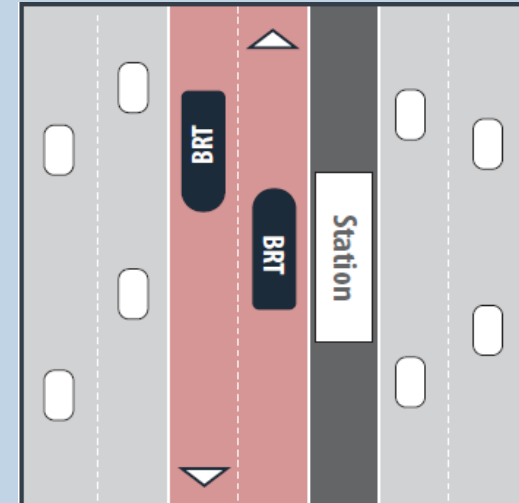
# BRT ELEMENTS – RUNNING WAY



Mixed Traffic



Curbside Business  
Access Transit  
(BAT) Lane



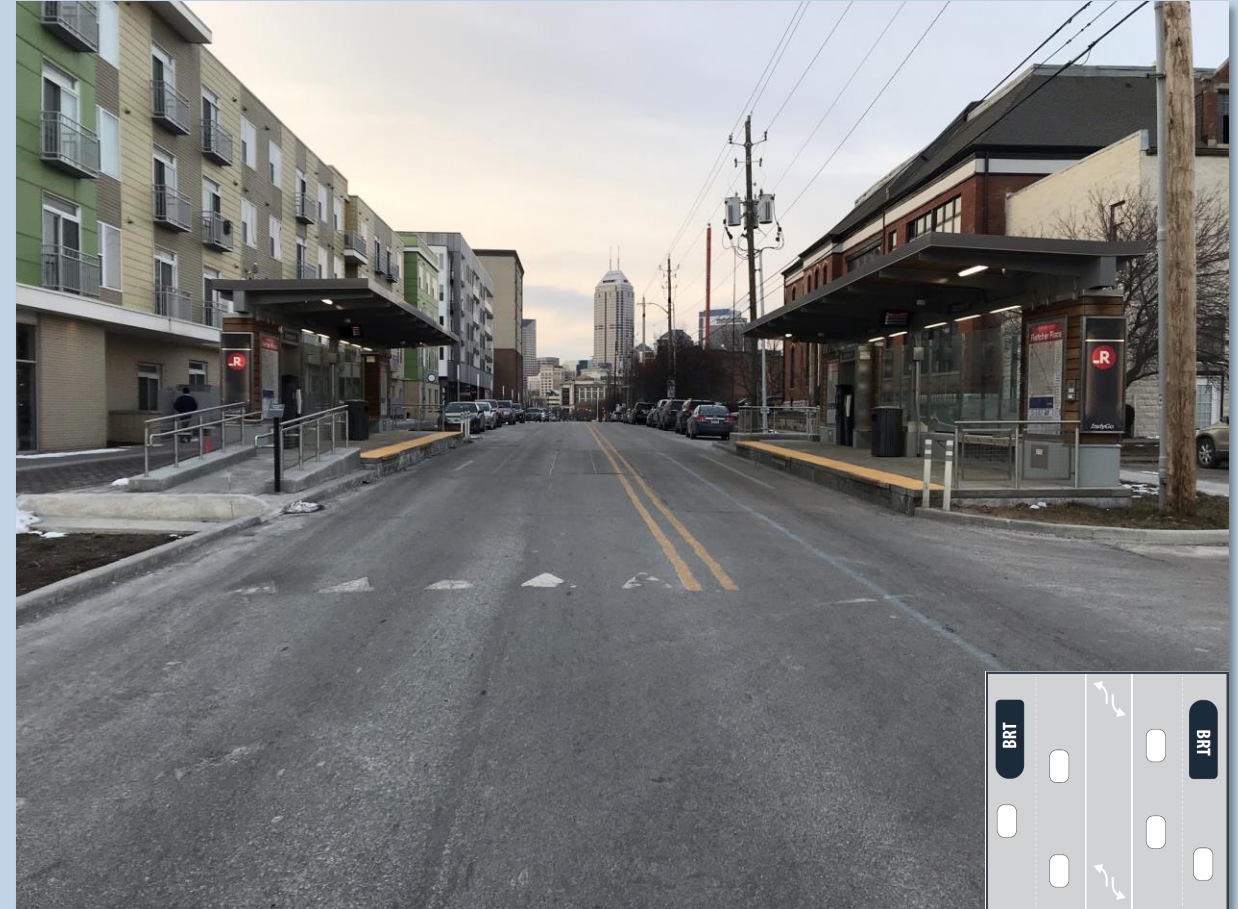
Center Running  
Dedicated Lane



# CURB RUNNING BUS LANE AND CURBSIDE STATION



M Street BAT lane with curbside station, DC



IndyGo Red Line BRT mixed flow lane with curbside station



# CENTER RUNNING TRANSITWAY AND SPLIT STATION



Metroway BRT, Alexandria, VA



Metroway BRT, Alexandria, VA



# CENTER RUNNING BUS LANE AND SPLIT STATION



Pulse Broad Street BRT, Richmond, VA



Columbus Avenue Bus Lane Project, Boston, MA



# OVERVIEW OF 2012 PLAN KEY FEATURES

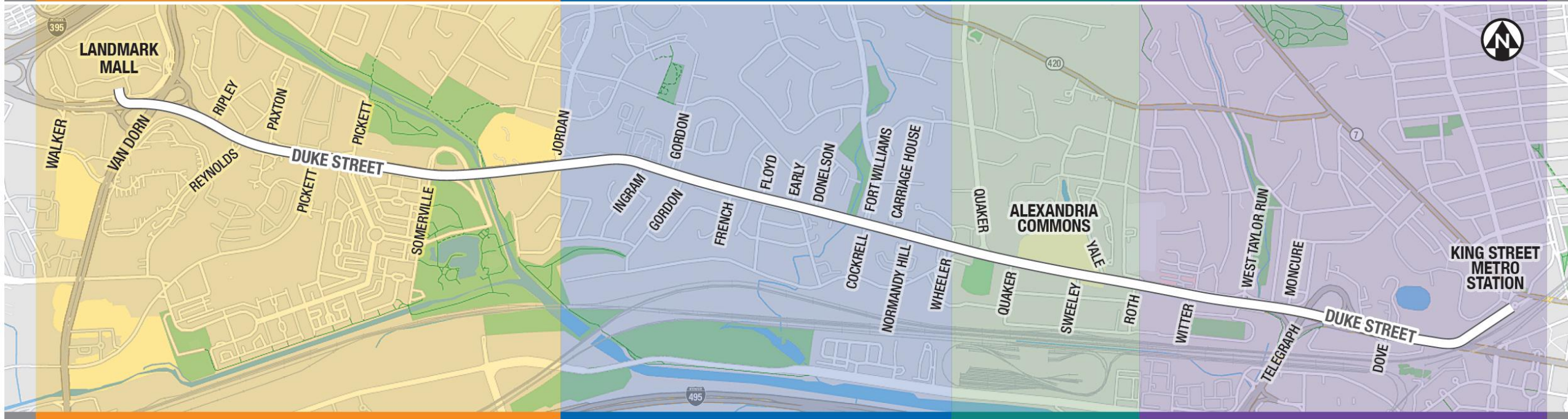
# CORRIDOR SEGMENTS

## SEGMENT 1 - Landmark Mall to Jordan

## SEGMENT 2A – Jordan to Wheeler

## SEGMENT 2B Wheeler to Roth

## SEGMENT 3 - Roth to King St Metro Station



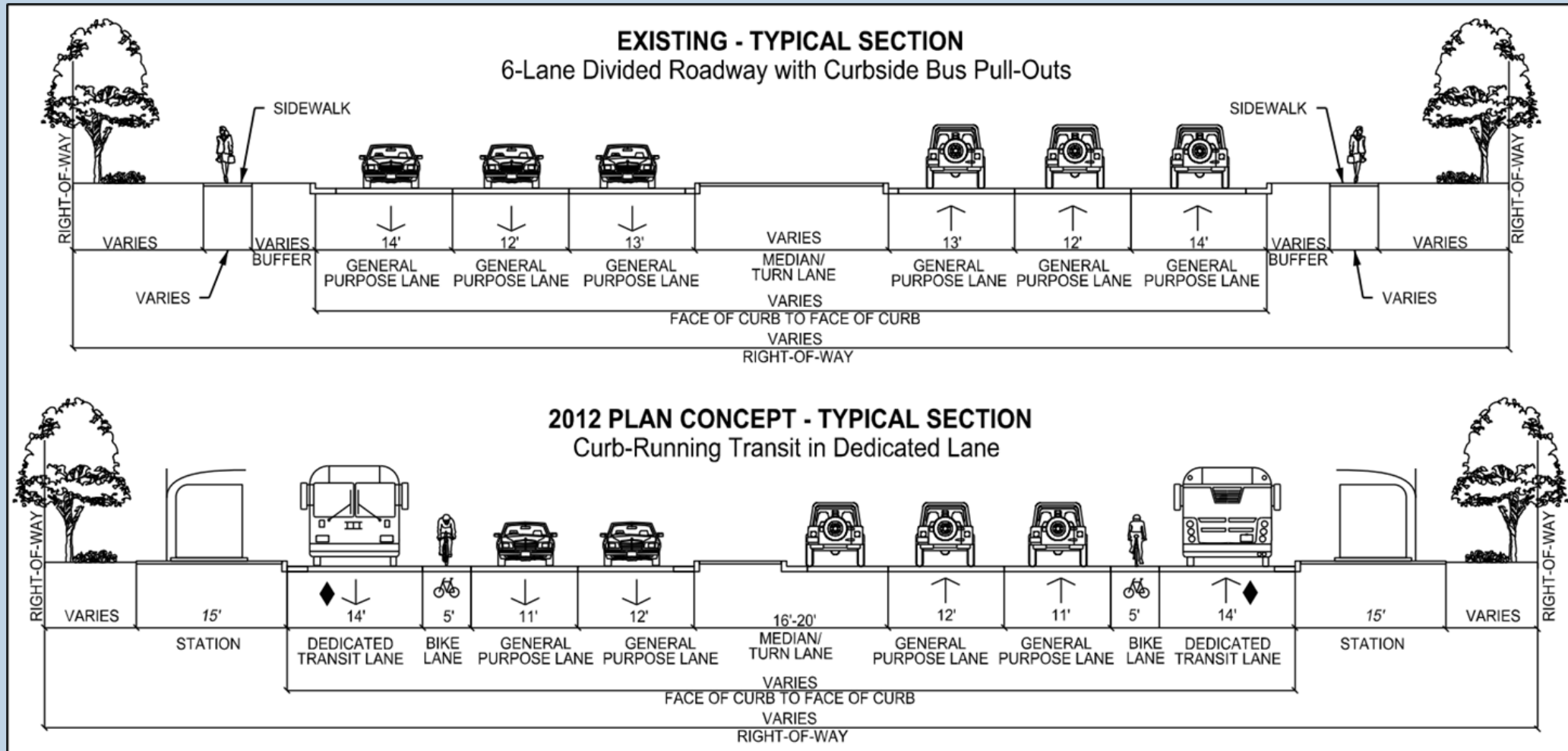
- Higher density
- 6-lane section
- Frontage road for business

- Access to transit
- 4-lane section
- Frontage road for residential and business

- Transitional cross-section
- Business access
- Traffic operations

- Access to transit
- Regional traffic access
- Traffic operations

# SEGMENT 1: LANDMARK TO JORDAN STREET CROSS-SECTION



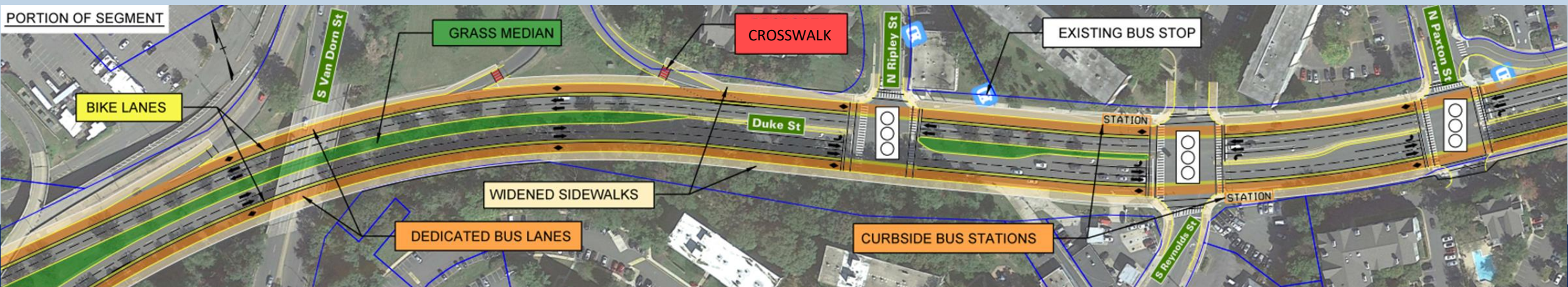


# SEGMENT 1 CONSIDERATIONS

- Repurposing traffic lanes
- Bike lane placement
- Shared bus lane and ramp traffic
- Crossing distance at intersections
- Mid-block pedestrian crossings



Existing Duke Street at N Paxton Street (looking east)



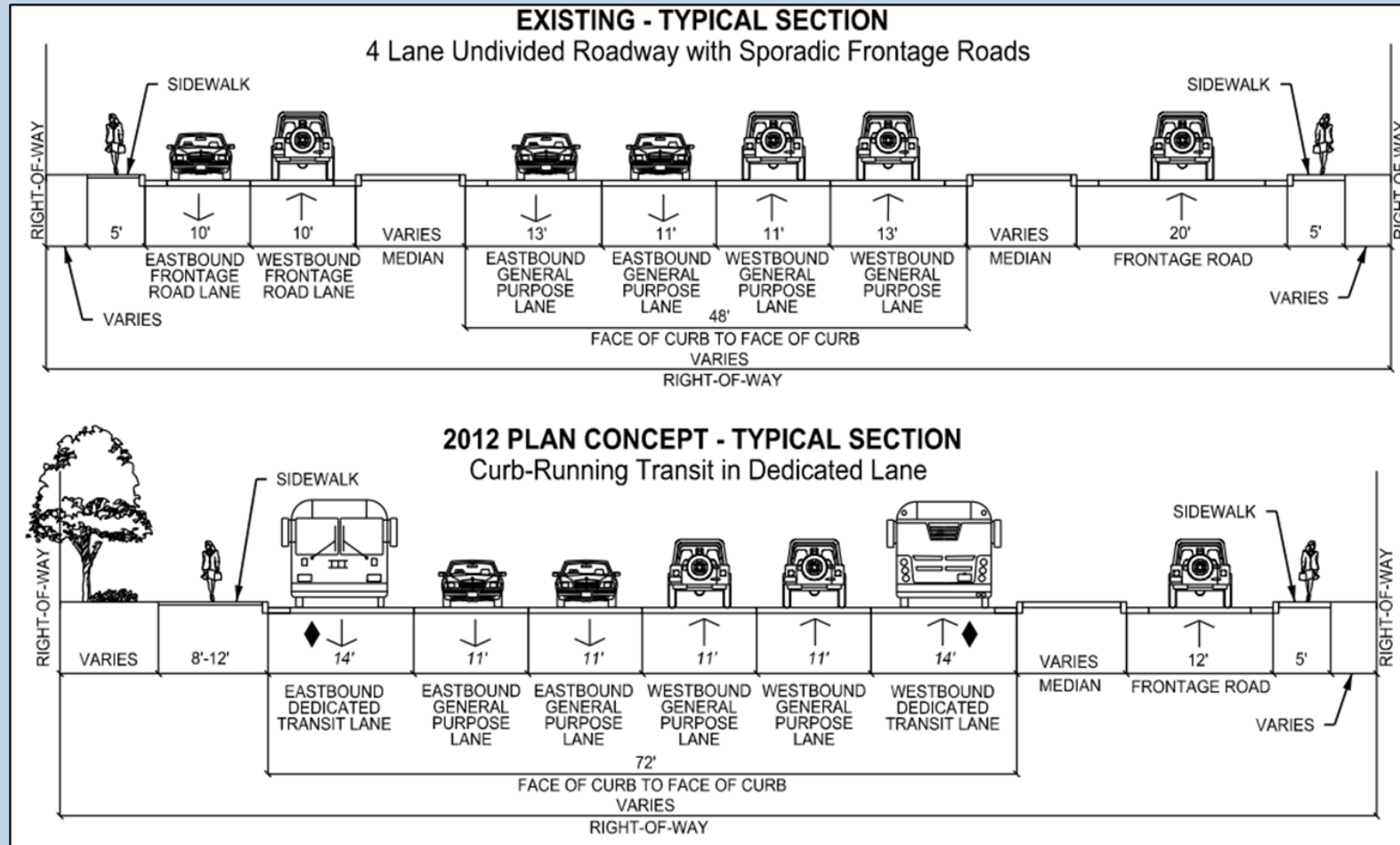
# SEGMENT 1 KEY QUESTIONS

- What do you think of the dedicated transit lane?
- What do you think of the sidewalks?
- What do you think of the bike lanes?
- What do you think of connectivity (crosswalks, sidewalks, etc.) to destinations?
- Is there anything that could improve this segment?



# SEGMENT 2A: JORDAN STREET TO WHEELER AVENUE

## Segment 2A Sub-Section: Jordan Street to North Gordon Street

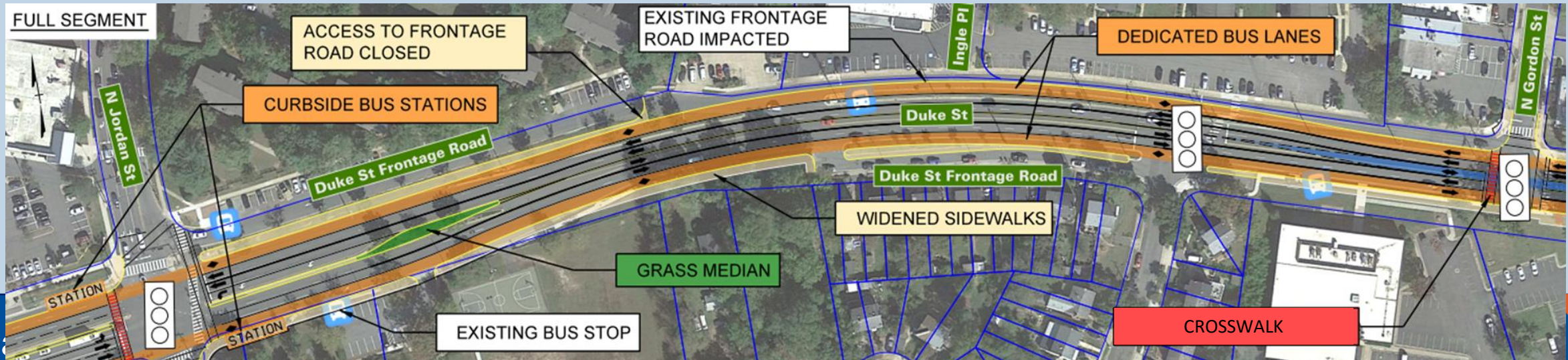


# SEGMENT 2A CONSIDERATIONS

- Repurposing commercial frontage road
- Access to Jordan Street Service Road
- Mid-block pedestrian crossings



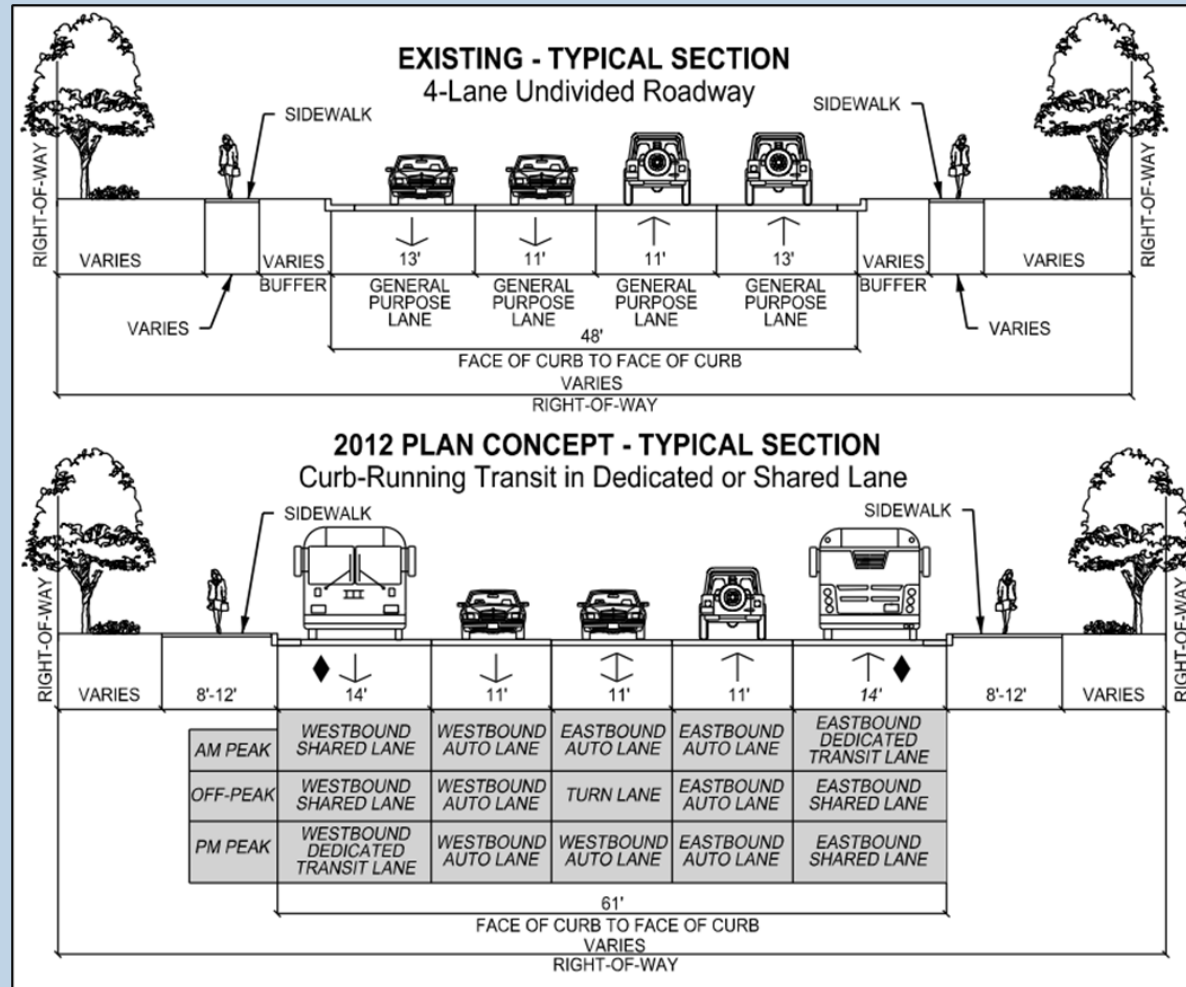
Existing Duke Street near Ingle Place (looking east)





# SEGMENT 2A: JORDAN STREET TO WHEELER AVENUE

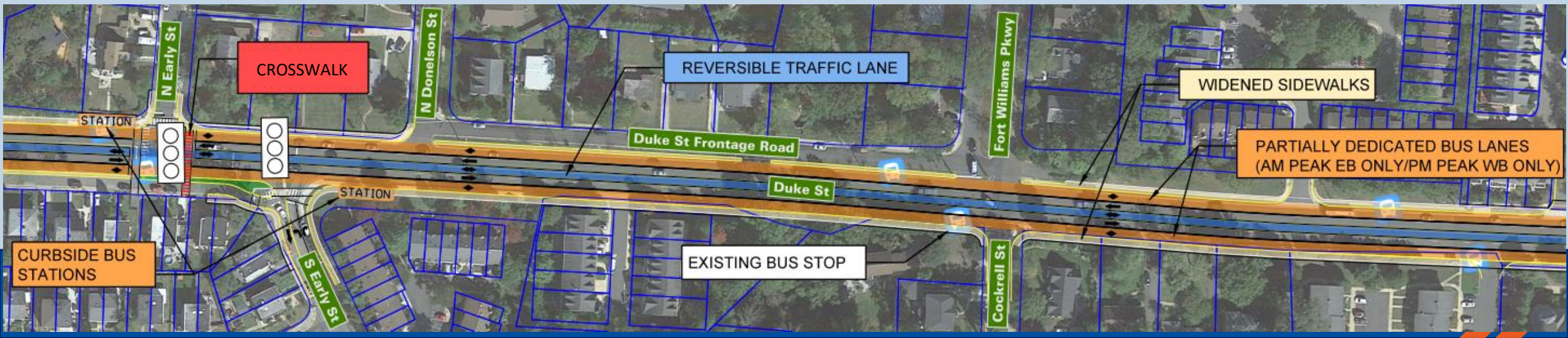
Segment 2A Sub-Section: North Gordon Street to Wheeler Avenue





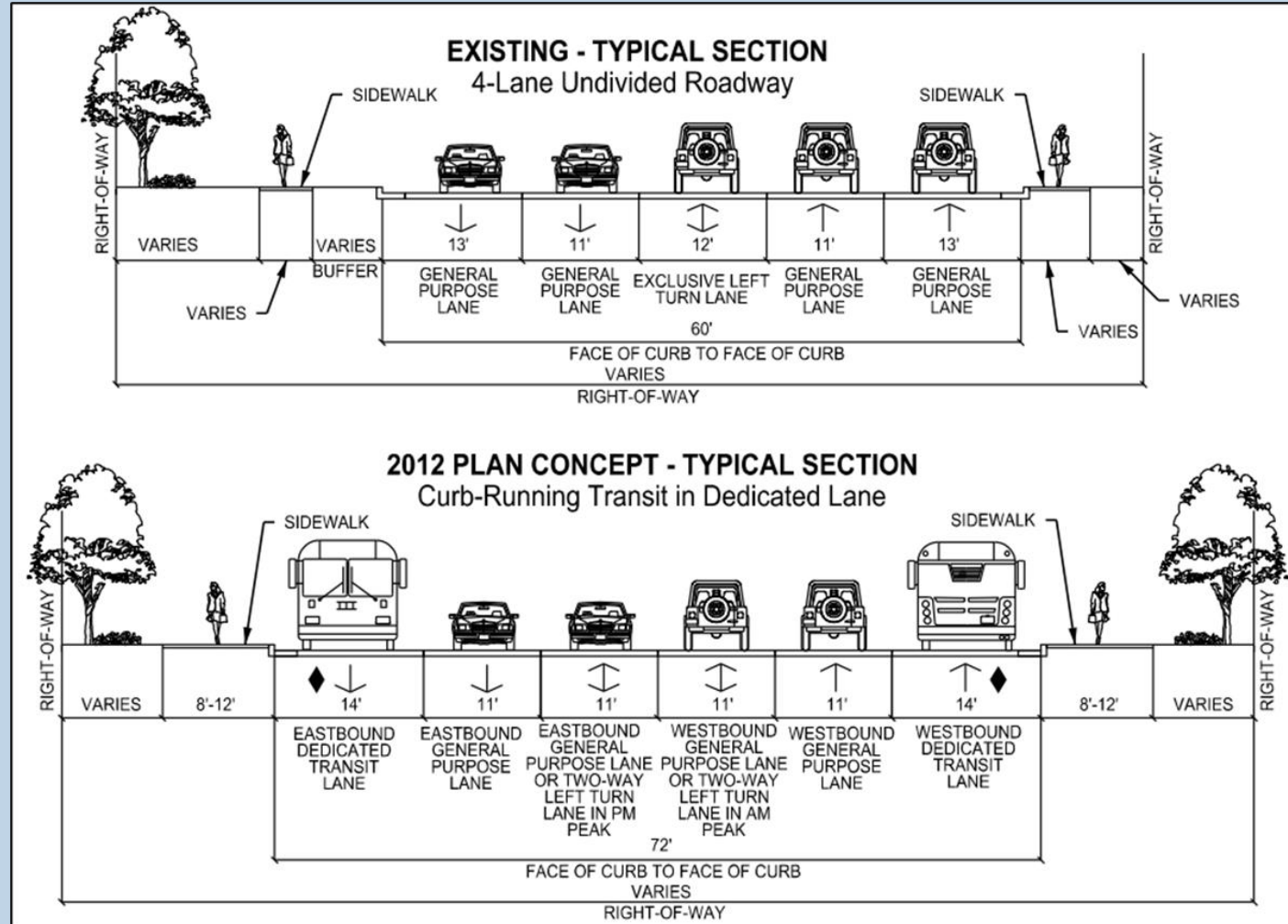
# SEGMENT 2A CONSIDERATIONS

- Widening from 4 to 5 lanes
- Reversible traffic lane
- Property line impact
- Sidewalk gaps
- Mid-block pedestrian crossings





# SEGMENT 2B: WHEELER AVENUE TO ROTH STREET CROSS-SECTION

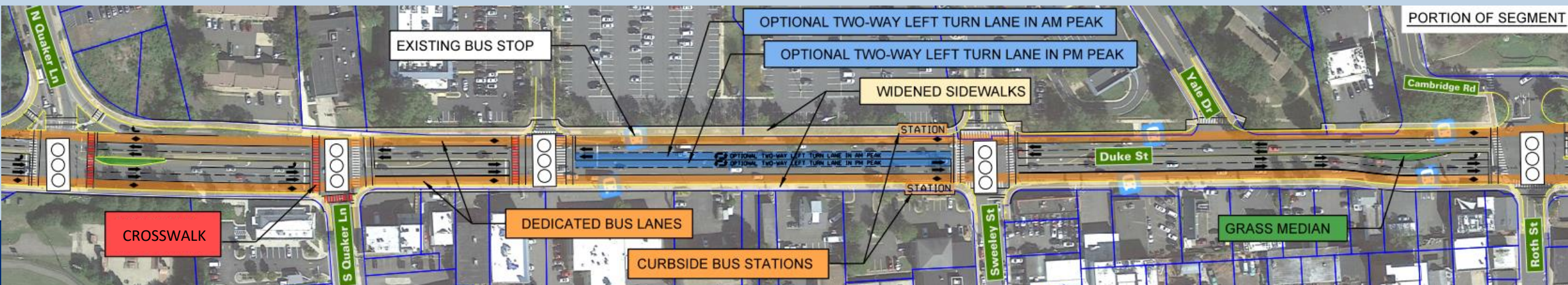


# SEGMENT 2B CONSIDERATIONS

- Widening from 5 to 6 lanes
- Variable left-turn/through lanes
- Property line impact



Existing Duke Street at Sweeley Street (looking west)

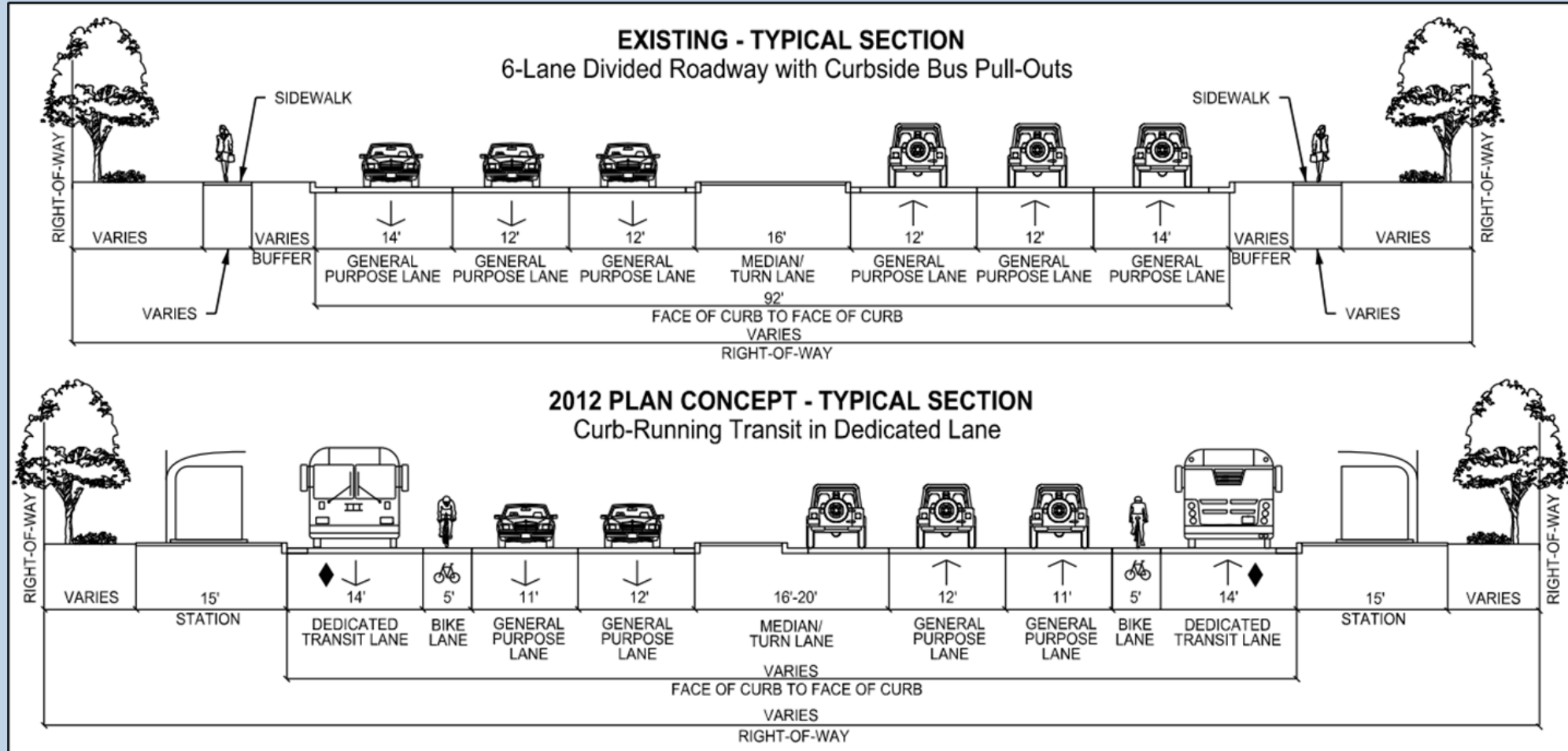




# SEGMENT 2 KEY QUESTIONS

- What do you think of the transit lane?
- What do you think of the sidewalks?
- What do you think of connectivity (crosswalks, sidewalks, etc.) to destinations?
- Is there anything that could improve this segment?

# SEGMENT 3: ROTH STREET TO KING STREET METRO STATION CROSS-SECTION



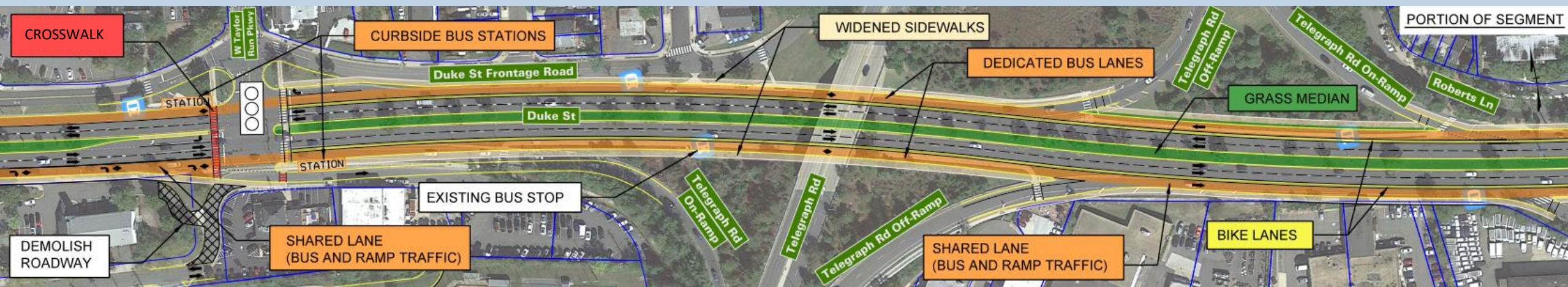


# SEGMENT 3 CONSIDERATIONS

- Repurposing WB traffic lane
- Shared bus lane and ramp traffic
- Bike lane placement
- Crossing distance at intersections
- Sidewalk gaps (north side)



Existing Duke Street at West Taylor Run Parkway (looking east)



# SEGMENT 3 KEY QUESTIONS

- What do you think of the dedicated transit lane?
- What do you think of the sidewalks?
- What do you think of the bike lanes?
- What do you think of connectivity (crosswalks, sidewalks, etc.) to destinations?
- Is there anything that could improve this segment?



# Three easy ways to join the conversation with PollEverywhere.

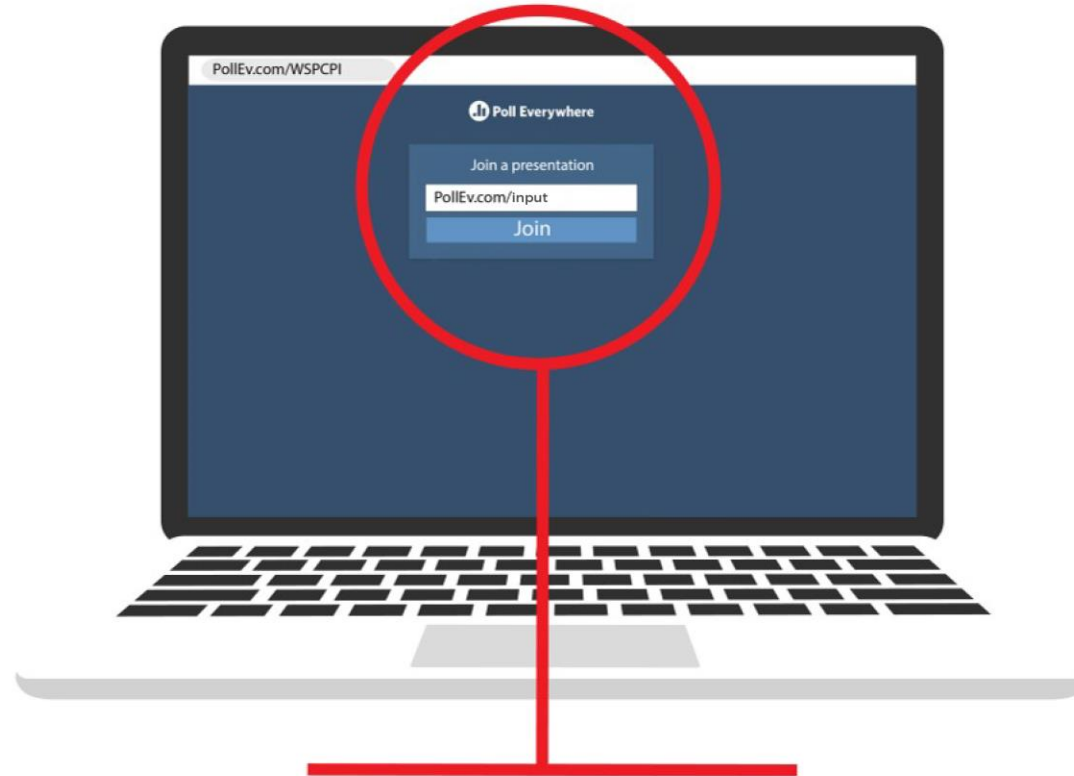
## APP



Download the **free** PollEverywhere App and enter **INPUT** into the field reading: **"PollEv.com/username"**

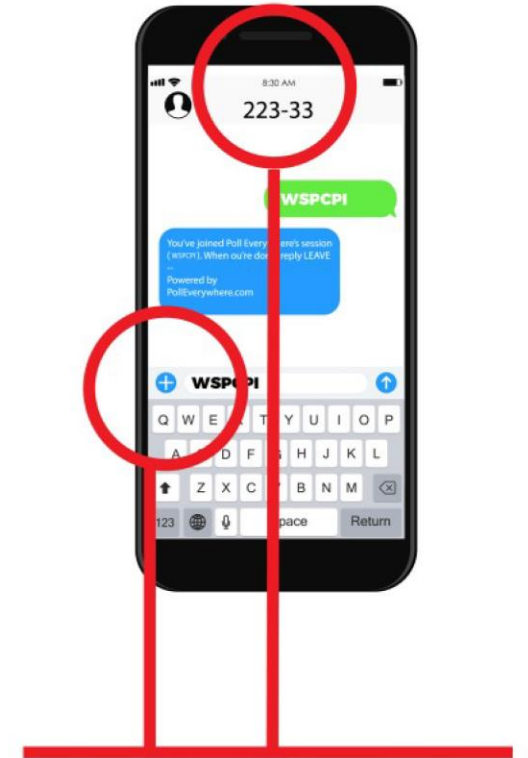


## WEB



Go to **PollEv.com/input** to enter the poll via web browser.

## TEXT



Text **INPUT** to 223-33 to enter the poll via text.

*\*not all questions are available via text*

# SCHEDULE AND MILESTONES



# ADVISORY GROUP SCHEDULE AND MEETING GOALS

- APRIL 2022: Introduction, background, **Vision and Guiding Principles**
- JUNE 2022: **Adoption of Vision and Guiding Principles**
- JUNE 2022: **Review of 2012 recommendation and / or need for additional alternatives**
- AUGUST 2022: Initial review and comment on draft alternatives, **followed by 1st round of public input in mid- to late September**
- OCTOBER 2022: Review of public input and final comments on alternatives
- NOVEMBER 2022: **Endorsement of alternatives to move forward to TC/CC**
- FEBRUARY 2023: Review of elements for inclusion in preferred alternative, **followed by 2<sup>nd</sup> round of public input in March and April**
- JUNE 2023: **Final endorsement of preferred alternative**