


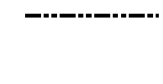

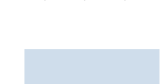
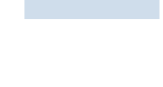
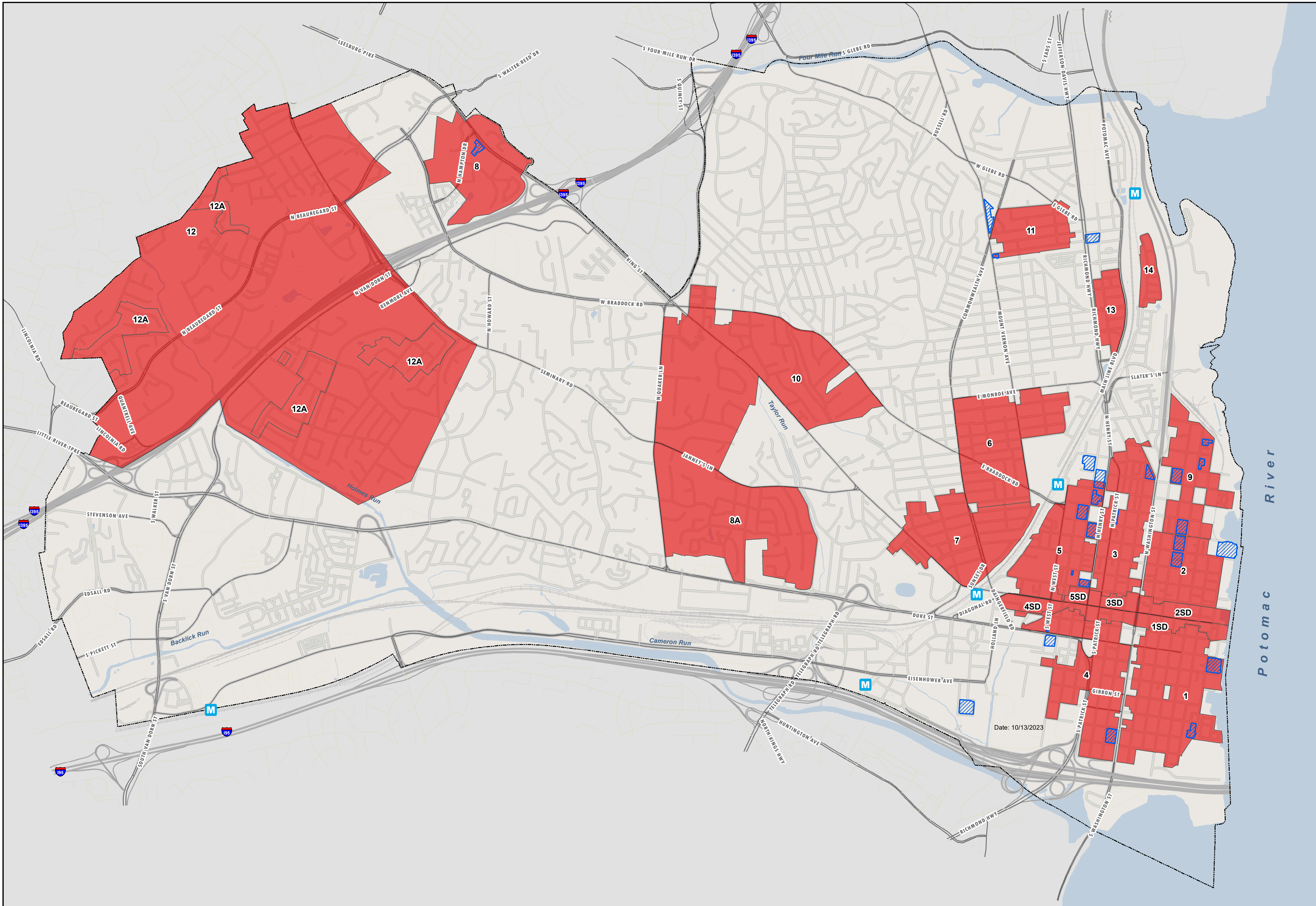


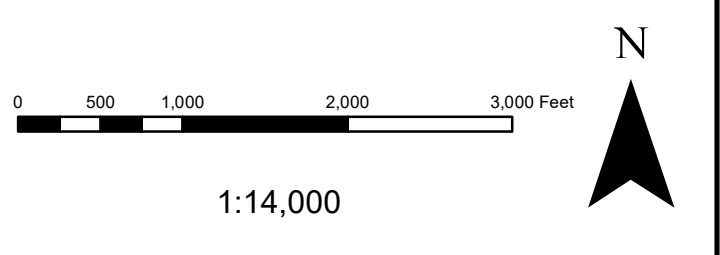
Residential Parking Districts

Map Published Date: 10/13/2023

-  SUP Parking Conditions
-  Residential Parking Districts*
-  Metro Station
-  City Boundary
-  Metro Tracks
-  Railroads
-  Water Bodies



Date: 10/13/2023



*RPA amendments following the 2004 approved map are included.
 Mapping Standards:
 Coordinate System - NAD83 State Plane Virginia North
 Projection - Lambert Conformal Conic
 Map Units - Feet
 This map was produced by the GIS Division of the ITS Department, City of Alexandria, VA.
 The maps provided hereunder are provided "as is" and the City expressly disclaims all warranties, UCC and otherwise, express or implied, including warranties as to accuracy of the maps and merchantability and fitness for a particular purpose, and further expressly disclaims responsibility for all incidental, consequential or special damages arising out of or in connection with the use or performance of the maps.
 Pursuant to Section 54-1-402 of the Code of Virginia, any determination of topography or contours, or any depiction of physical improvements, property lines or boundaries is for general information only and shall not be used for the design, modification or construction of improvements to real property or for flood plain determination.