

With limited parking on site, Balfour Beatty and Hilco will ensure that agreements are in place with neighboring garages to house excess/overflow parking from the site. Subcontractors will not be allowed to park on neighborhood streets and will be encouraged to use the metro rail/bus to access the site. During the Deconstruction sequences, manpower is expected to be between 100-150 Workers.

Parking Garages

- Colonial Parking - 44 Canal Center Plaza, Alexandria, VA 22314

Mass Transit options

- Metro station – Braddock Rd is located 1 mile from Project Site
- Dash and Metro bus operate within a few blocks of the Project site. Lines from both providers connect with Braddock Rd Metro station.

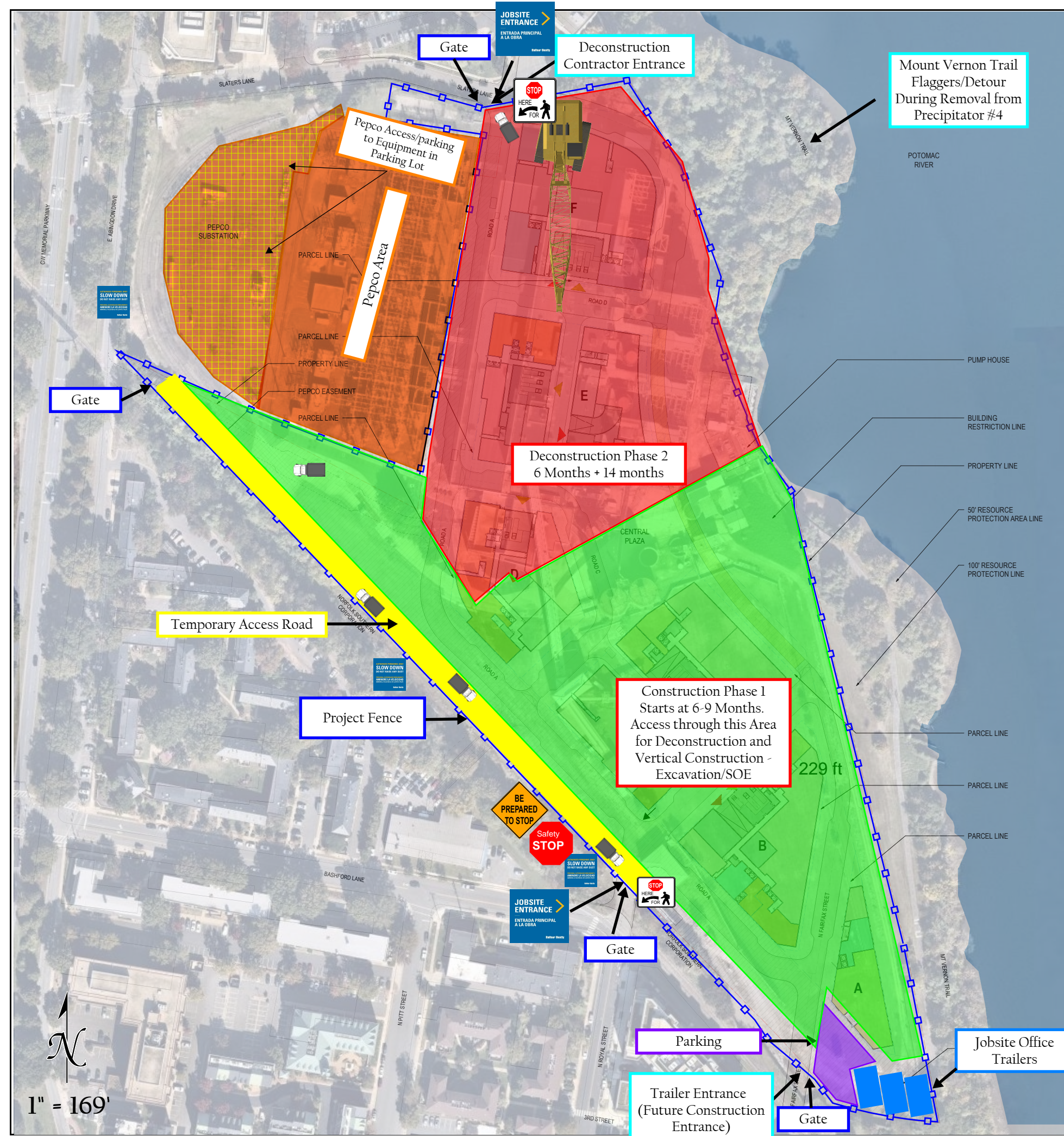
Reference **Site logistics** plan attached for travel paths for project.

Potomac River Generating Station Redevelopment LOGISTICS PLAN - Early Site

- This Sequence will involve the initial mobilization and deconstruction of the project.
- In this Sequence, Abatement is planned to start in all buildings.
- Approximately 50-100 Workers will be on site for this phase
- Parking
 - Colonial Parking - 44 Canal Center Plaza,
 - 801 N Fairfax St, Alexandria, VA 22314



| | | | | | | |
|--|--|-------------|--|-------------------|--|----------------------------|
| City of Alexandria Truck Map Map Produced: Date April 2020 | | Truck Route | | Truck Restriction | | Timed Truck Restriction |
| | | | | | | |

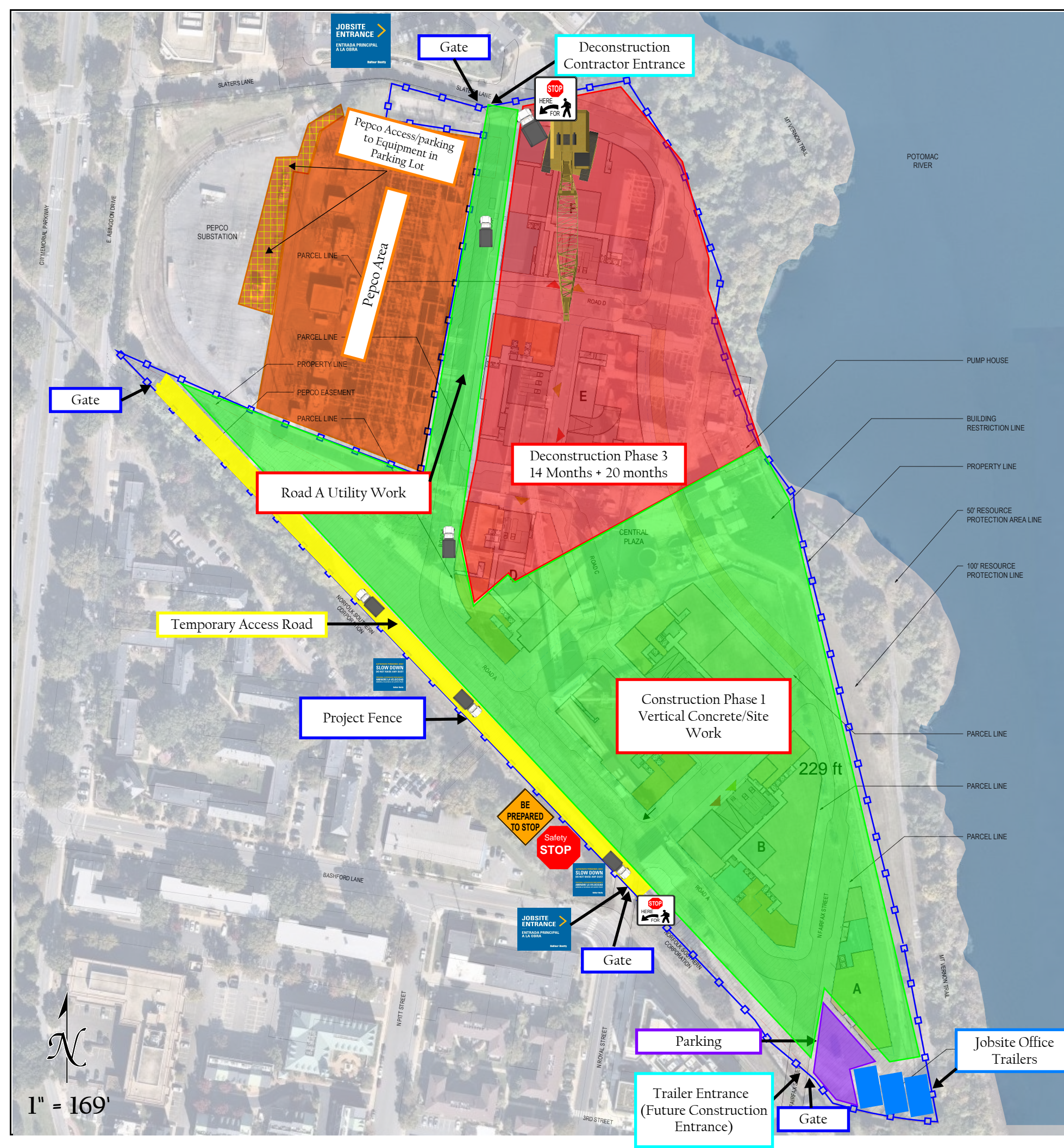


- This Sequence will involve the initial mobilization construction of the project. This will entail Excavation and Support of Excavation work.
- Deconstruction work will continue on the main structures during this phase.
- In this Sequence, Abatement will still be on-going for buildings
- Approximately 150-200 Workers will be on site for this phase
- Parking
 - Colonial Parking - 44 Canal Center Plaza,
 - 801 N Fairfax St, Alexandria, VA 22314

| | | | |
|--|-------------|-------------------|-------------------------|
| City of Alexandria Truck Map Map Produced: Date April 2020 | Truck Route | Truck Restriction | Timed Truck Restriction |
|--|-------------|-------------------|-------------------------|

Hilco
 Redevelopment Partners
 Balfour Beatty

Potomac River Generating Station Redevelopment LOGISTICS PLAN - Early Site



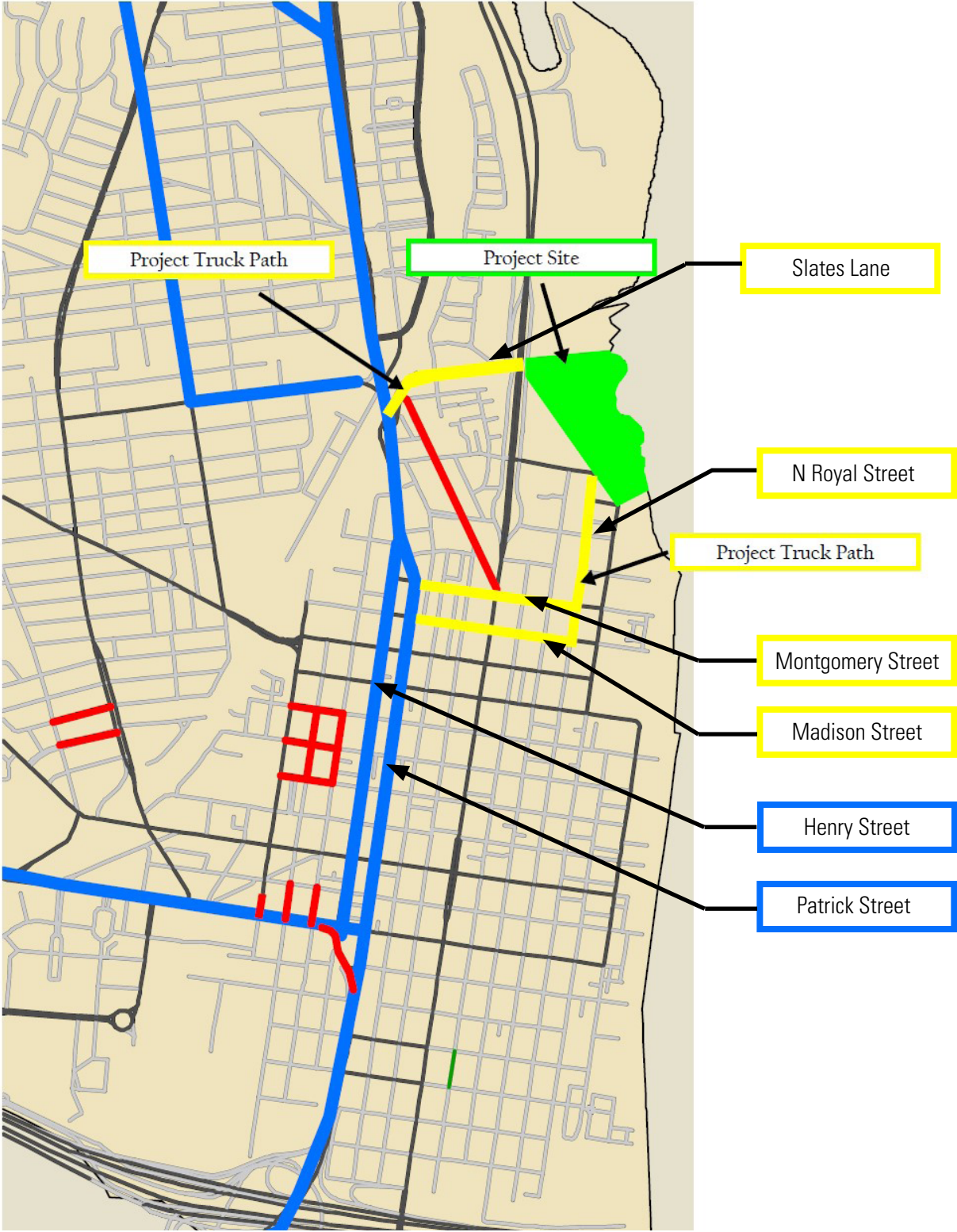
- During this phase, both new Construction and Deconstruction will coexist on the site.
- Deconstruction work will continue on the main structures during this phase.
- New Construction will include finishing concrete/skin and site/utility work
- Approximately 300-500 Workers will be on site for this phase
- Parking
 - Colonial Parking - 44 Canal Center Plaza,
 - 801 N Fairfax St, Alexandria, VA 22314

| | | | |
|--|-------------|-------------------|-------------------------|
| City of Alexandria Truck Map Map Produced: Date April 2020 | Truck Route | Truck Restriction | Timed Truck Restriction |
|--|-------------|-------------------|-------------------------|

Hilco
 Redevelopment Partners
 Balfour Beatty

Potomac River Generating Station Redevelopment
LOGISTICS PLAN - Early Site

Truck Route for the City of Alexandria **Balfour Beatty**



| | | | |
|---|--|---|---|
| <p>City of Alexandria Truck Map Map Produced: Date April 2020</p> | <p>— Truck Route</p> | <p>— Truck Restriction</p> | <p>- - - Timed Truck Restriction</p> |
|---|--|---|---|